

Table: Design & Construction Phases Projects

Table: Design & Construction Phases Projects										Study Phase		Design Phase		Bid Phase		Construction Phase	
Project Name	Budgeted Total Cost	Actual Total Cost	Remaining Total Cost	Duration% Complete	PM	Consultant	Contractor	Start	Finish	Start	Finish	Start	Finish	Start	Finish		
Design Projects																	
WSUP-116 Unity Reed Booster Pumping Station and Discharge Main, F14	\$1,019,619.00	\$194,982.03	\$824,636.97	81.63%	Jay			-	-	27-Jul-21 A	15-Jan-24	16-Jan-24	3-Nov-24	5-Sep-24	2-May-26		
MISC-102 Wellington Road Operations Center Expansion, A04	\$508,200.00	\$503,245.59	\$4,954.41	77.25%	Jay			-	-	25-Mar-22 A	13-Mar-24	13-Mar-24	31-Dec-24	1-Nov-24	29-Jun-26		
MISC-116 English Gardens, U003	\$2,800,000.00	\$0.00	\$2,800,000.00	20.00%	Alex			01-Dec-21 A	28-Feb-23 A	01-Mar-23 A	24-Oct-24	25-Oct-24	13-Aug-25	15-Jun-25	25-Jan-27		
MISC -117 Powell's Creek SPS and Force Main Replacement, L08	\$1,498,324.62	\$0.00	\$1,498,324.62	13.90%	Naeem			14-Oct-22 A	13-Jun-23 A	20-Jun-23 A	6-Jul-25	13-Apr-25	28-Feb-26	30-Dec-25	15-Nov-27		
MISC-117 Occoquan Plant SPS, L14	\$500,000.00	\$0.00	\$500,000.00	0.00%	Still Not Assigned Yet			20-May-22 A	15-Jun-23 A	2-Oct-23	18-Jan-25	18-Jan-25	7-Nov-25	8-Sep-25	18-Feb-27		
MISC-117 North Fork SPS, L39	\$1,000,000.00	\$0.00	\$1,000,000.00	0.00%	Still Not Assigned Yet			20-May-22 A	15-Jun-23 A	2-Oct-23	18-Jan-25	18-Jan-25	7-Nov-25	8-Sep-25	18-Feb-27		
MISC-117 Dewey's Creek SPS, L09	\$1,000,000.00	\$0.00	\$1,000,000.00	0.00%	Still Not Assigned Yet			20-May-22 A	15-Jun-23 A	2-Oct-23	18-Jan-25	18-Jan-25	7-Nov-25	8-Sep-25	18-Feb-27		
MISC-118 Nottoway Tank Site Development	\$744,003.01	\$613,810.76	\$130,192.25	85.76%	Micah			-	-	21-Feb-22 A	7-Jan-24	8-Jan-24	26-Oct-24	28-Aug-24	13-Jul-26		
SPS-115 Belmont SPS and FM, L17	\$491,741.78	\$441,984.91	\$49,756.87	84.87%	Sandra			-	-	01-Jun-21 A	31-Jan-24	1-Feb-24	19-Nov-24	21-Sep-24	3-Jun-26		
SPS-118 Koon's SPS, L28	\$515,346.76	\$482,265.00	\$33,081.76	84.87%	Bijay			-	-	01-Jun-21 A	1-Mar-24	24-Jan-24	11-Nov-24	12-Nov-24	10-Jun-26		
SPS-123 Spinnaker Court SPS, L02	\$515,346.76	\$482,265.00	\$33,081.76	82.57%	Bijay			-	-	01-Jun-21 A	1-Mar-24	24-Jan-24	11-Nov-24	14-Oct-24	16-Jul-26		
SPS-134 Hooes Run SPS, L01	\$1,355,426.97	\$0.00	\$1,355,426.97	0.00%	Micah			-	-	30-Nov-23	5-Mar-26	6-Mar-26	23-Dec-26	25-Oct-26	21-Jun-28		
SPS-135 Yorkshire SPS Retaining Wall, L30	\$143,487.71	\$66,844.22	\$76,643.49	49.15%	Micah			-	-	13-Mar-23 A	28-Apr-24	29-Apr-24	15-Feb-25	18-Dec-24	14-Aug-26		
SPS-135 Yorkshire SPS, L30	\$733,796.58	\$27,075.20	\$706,721.38	42.90%	Micah			-	-	01-Dec-22 A	10-Nov-24	11-Nov-24	30-Aug-25	2-Jul-25	26-Feb-27		
SPS-136 Melrose SPS, L10	\$577,036.94	\$130,463.27	\$446,573.67	35.94%	Sandra			27-Sep-21 A	27-May-22 A	01-Dec-22 A	9-Sep-24	10-Sep-24	29-Jun-25	1-May-25	6-Feb-27		
SPS-137 Dawson's Landing SPS, L51	\$106,498.81	\$0.00	\$106,498.81	0.00%	Sandra			27-Sep-21 A	27-May-22 A	1-Jul-24	18-Oct-25	19-Oct-25	7-Aug-26	9-Jun-26	3-Feb-28		
WAT-200 Route 1 12-inch water Main on Main Street, W007	\$139,402.00	\$0.00	\$139,402.00	47.72%	Naeem			-	-	15-Feb-23 A	8-Jun-24	8-Jun-24	28-Mar-25	27-Jan-25	13-Dec-26		
WAT-200 Water Distribution Asset Replacement Program 3, W006	\$717,397.00	\$0.00	\$717,397.00	34.68%	Naeem			-	-	03-Feb-23 A	28-Dec-24	29-Dec-24	17-Oct-25	19-Aug-25	4-Jul-27		
WAT-200 Water Distribution Asset Replacement Program 1, W005	\$519,244.00	\$52,012.00	\$467,232.00	82.87%	Jay			-	-	16-Nov-21 A	20-Jan-24	20-Jan-24	8-Nov-24	9-Sep-24	26-Jul-26		
WRF-123 Grubss HVAC, P001	\$291,515.17	\$166,677.23	\$124,837.94	59.45%	Naeem			-	-	04-Dec-22 A	24-Apr-24	25-Apr-24	17-Jan-25	19-Nov-24	4-Oct-26		
WRF-138 Mooney D/B Design, P002	\$12,405,613.00	\$11,320,669.73	\$1,084,943.27	81.56%	Naeem			-	-	27-Sep-21 A	13-Jan-24	15-Apr-23 A	28-Jan-24	21-Sep-21 A	18-Jan-28		
SEW 158 I-66 Rest Area Sewer Main Replacement, S004	\$190,850.00	\$0.00	\$190,850.00	15.25%	Bijay			-	-	06-Mar-23 A	5-Oct-24	5-Oct-24	25-Jul-25	26-May-25	7-Feb-27		
SEW-200 UOSA Bridge @ Quarry Road, U002	\$191,903.70	\$150,104.75	\$41,798.95	70.77%	Naeem			-	-	18-Jul-22 A	4-Feb-24	5-Feb-24	28-Sep-24	31-Jul-24	27-Mar-26		
Construction Projects																	
MISC-103 Customer Service HVAC, U001 (Naeem)	\$0.00	\$0.00	\$0.00	100.00%	Naeem			-	-	-	-	-	-	07-Feb-22 A	08-Aug-23 A		
MISC-115 McDonald's Sewer Lateral, S003 (Jay)	\$127,000.00	\$0.00	\$127,000.00	0.00%	Jay			-	-	-	-	-	-	5-Oct-23	8-Nov-23		
SPS-107 Occoquan Forest SPS, L37 (Alex)	\$322,319.50	\$289,437.92	\$32,881.58	87.93%	Alex			-	-	-	-	-	-	16-Mar-20 A	28-Apr-24		
SPS-107 Occoquan Forest SPS, L36 (Alex)	\$3,534,289.50	\$3,451,305.57	\$82,983.93	39.60%	Alex			-	-	-	-	-	-	16-Mar-20 A	27-Dec-24		
SPS-108 Nokesville SPS, L20 (Alex)	\$1,430,420.00	\$1,430,420.00	\$0.00	33.87%	Alex			-	-	-	-	-	-	16-Mar-20 A	27-Dec-24		
SPS-112 Graham Park SPS, L13 (Alex)	\$2,193,824.40	\$2,191,512.68	\$2,311.72	94.08%	Alex			-	-	-	-	-	-	08-Sep-21 A	1-Dec-23		
SPS-113 Heritage Hunt SPS and FM, L52 (Bijay)	\$29,320,081.92	\$18,672,526.80	\$10,647,555.12	60.67%	Bijay			-	-	-	-	-	-	27-Jul-20 A	4-Jan-25		
SCADA 1824C, C001 (Jay)	\$17,231,913.40	\$2,356,817.05	\$14,875,096.35	20.61%	Jay			-	-	-	-	-	-	29-Sep-22 A	18-Aug-27		
WAT-181 Route 1 - Phase 1, W001 (Alex)	\$10,357,802.79	\$9,536,579.27	\$821,223.52	91.03%	Alex			-	-	-	-	-	-	23-Jan-21 A	31-Dec-23		
WAT-182 Route 1 - Phase 2, W002 (Alex)	\$8,691,062.79	\$8,003,918.22	\$687,144.57	91.03%	Alex			-	-	-	-	-	-	23-Jan-21 A	31-Dec-23		
WAT-200 Water Distribution Asset Replacement Program 2, W004 (Jay)	\$3,669,325.00	\$903,972.90	\$2,765,352.10	16.15%	Jay			-	-	-	-	-	-	23-Mar-23 A	18-Aug-24		
WAT-200 West Longview Dr. Water Main, W003 (Alex)	\$745,110.00	\$745,110.00	\$0.00	100.00%	Alex			-	-	-	-	-	-	07-Jun-21 A	01-Jul-23 A		
WRF-138 Dominion Feeder Relocation at Mooney Plant, P003 (Naeem)	\$84,799.14	\$54,305.37	\$30,493.77	74.31%	Naeem			-	-	-	-	-	-	30-Mar-23 A	4-Dec-23		
SEW-106 Dumfries Force Main, S002 (Alex)	\$2,044,003.85	\$2,044,003.85	\$0.00	100.00%	Alex			-	-	-	-	-	-	23-Mar-21 A	01-Jul-23 A		
SEW-157 Sudley Road Sewer, S001 (Alex)	\$2,973,694.03	\$2,973,694.03	\$0.00	100.00%	Alex			-	-	-	-	-	-	23-Mar-21 A	01-Jun-23 A		

Diagram: No. Projects per PM

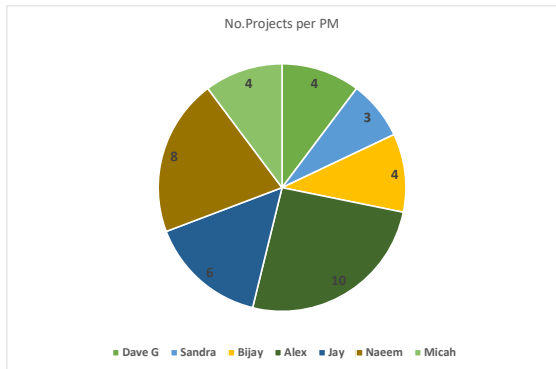


Diagram: No. Projects per Contractor

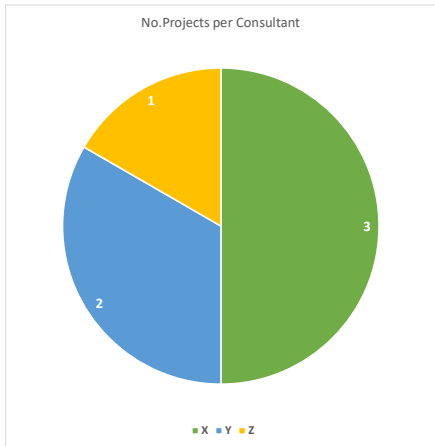


Diagram: No. Projects per Consultant

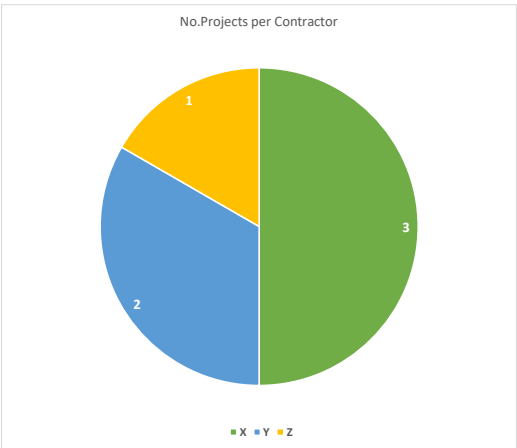


Diagram: Number & Budgeted Cost for Design, Construction, and Completed Projects

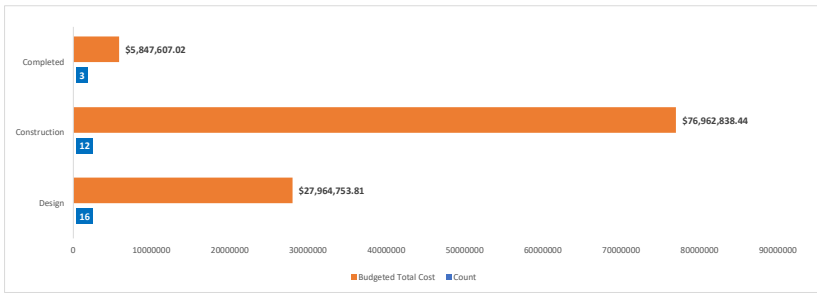


Diagram: Budgeted vs Actual Cost & % Completion

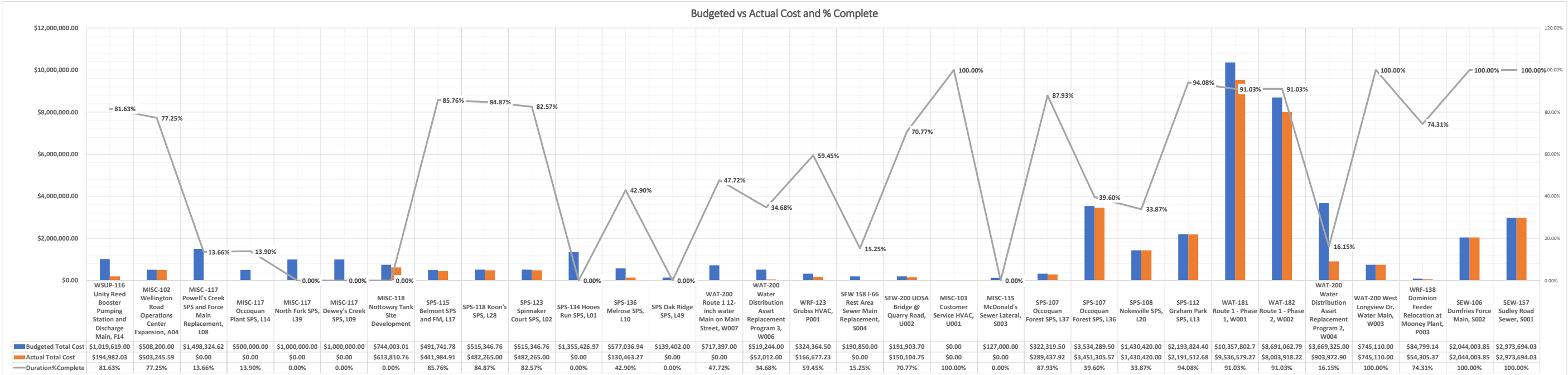


Diagram: CIP Project Type

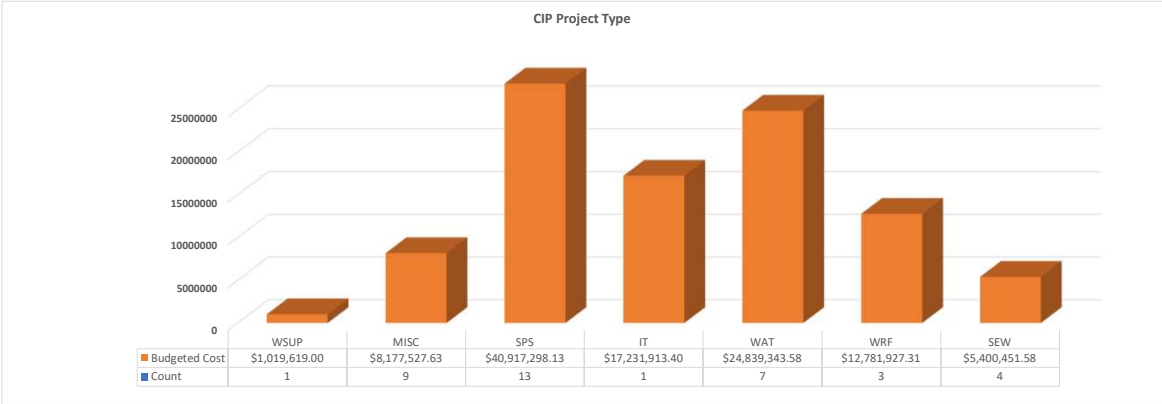
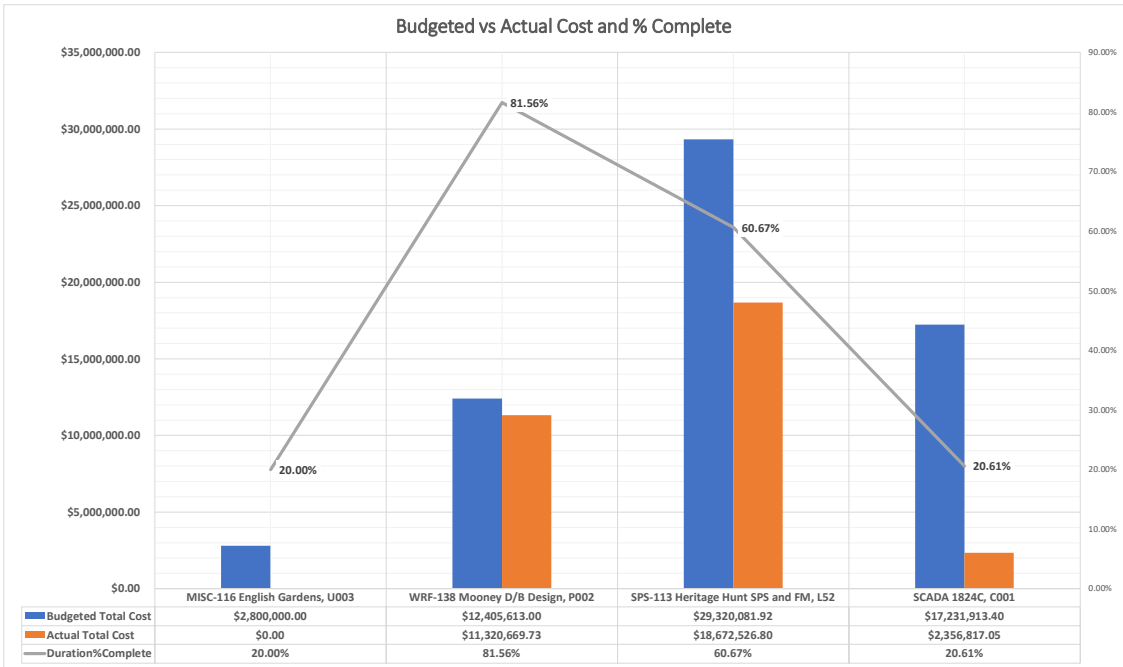


Table: Permits/Communications Checkbox

Permits		
Item	Description	Status
1	Minor Site or Final Site Plan	
2	Site Development and Erosion	
3	Foodplain Permitting	
4	Stormwater Management Plan	
5	DEQ Certificate to	
6	Resource Protection Area (RPA)	
7	Recording of	

Communications		
Item	Description	Status
1	Website Update	
2	Public Hearing	
3	Customer Notifications	

Total Manpower Per this month	
Item	Number
Planning	
Contracts	
Procurement	
PMO	
Total	0

Area of Concern (Main Issue Register)

Item	Description
1	
2	
3	
4	