

FDOT-T5700

Improvements at State Road 44 & I-95 Interchange



Main Contractor: CHINCHOR ELECTRIC INC.



CPM Scheduling Consultant: HSE CONTRACTORS INC.

Baseline Schedule Narrative

Notice to Proceed March 26, 2021

Completion Date January 9, 2022

LEGAL DISCLAIMER – This document including any portions, attachments, or exhibits should be considered confidential and legally privileged. You are hereby notified that any unauthorized dissemination, distribution, or copying of this document or any of its contents is strictly prohibited. If you received this document in error or are not the intended recipient, immediately destroy the original document and any copies of it from your computer system and notify HSE Contractors, Inc. Any information contained herein cannot be used in any manner that may be detrimental to HSE Contractors, Inc.

Contents

1.	Project Information.....	3
1.1.	Project Description	3
1.2.	Scope of Work.....	3
2.	Project Phasing.....	4
2.1.	Phase I.....	4
2.2.	Phase II.....	4
2.3.	Phase III.....	4
2.4.	Phase IV	4
2.5.	Phase V	4
3.	Key Dates	4
4.	WBS	5
5.	Calendars	6
6.	Working hours.....	7
7.	Critical path.....	7
8.	Conclusion	9
9.	Schedule Log.....	9

1. Project Information

1.1. Project Description

The FDOT awarded construction contract no. T5700 to Chinchor Electric for the works of improvements at State Road (SR) No. 44 and I-95 Interchange.



Project Layout

1.2. Scope of Work

The improvements under this contract consist of milling & resurfacing, base work, shoulder treatment, drainage improvements, curb and gutter, traffic signals, lighting, highway signing, wrong way detection system (WWDS), and other incidental construction.

2. Project Phasing

2.1. Phase I

Phase I covers the scope from **STA. 111+72.97** to **STA. 112+77.26** on SR 44 west bound (WB) lane as well as the WWDS for I-95 south bound (SB) exit to SR 44 WB.

2.2. Phase II

Phase II covers the scope from **STA. 113+92.27** to **STA. 118+55.44** on SR 44 WB in addition to lighting and signalization works associated with the same area.

2.3. Phase III

Phase III covers the scope from **the I-95 NB exit to SR 44 EB** to **Memorial Medical Parkway** on SR 44 EB along with the signalization and communications works associated with the same area.

2.4. Phase IV

Phase IV covers the work from **STA. 110+00** to **the I-95 NB exit to SR 44 EB** on SR 44 EB and continues on the exit ramp until **STA 35+00** along with the signalization, communication, and WWDS works associated with the same area.

2.5. Phase V

Phase V covers the works of placing the friction course and striping and removal of MOT signs and Demobilization.

3. Key Dates

Item	Date	Duration
NTP	Mar-26-2021	
Flexible Start Time	Jul-24-2021	120 calendar days from NTP issuance
Project Finish	Jan-09-2021	170 calendar days from Start Time

4. WBS

The below figure is extracted from the baseline schedule of the project on the P6 software and shows all WBS levels. The table reflects how the contractor can manage all project components and monitor their progress separately and/ or collectively. The Milestones section includes all important milestones for the project. The Procurement section includes the procurement cycle for important materials arranged by the stage. And the Construction Section is divided into mobilization, then construction activities arranged by scope and stage, and finally close out.

FDOT-T5700 SR 44 & I-95 Improvments Baseline	
+	MILESTONES
-	PROCUREMENT
+	PREPARE & SUBMIT
+	REVIEW & APPROVE
+	FABRICATE & DELIVER
-	CONSTRUCTION
+	MOBILIZATION
-	ROADWAY
+	PHASE I
+	PHASE II
+	PHASE III
+	PHASE IV
+	PHASE V
-	LIGHTING
+	SR 44 WB (PHASE II)
-	SIGNALIZATION
+	SR 44 WB (PHASE II)
+	SR 44 EB (PHASE III & Phase IV)
-	COMMUNICATION
+	SR 44 EB (PHASE III & PHASE IV)
-	WRONG WAY DETECTION
+	I95 SB EXIT TO SR 44 EB (PHASE IV)
+	I95 SB EXIT TO SR 44 WB
+	SR44 EB (PHASE IV)
+	I95 NB EXIT TO SR 44 EB (PHASE IV)
+	CLOSE OUT

Project WBS

5. Calendars

This section contains details on the calendars which are assigned on all activities. The calendar usage and assignment demonstrate that the builder has taken into account all official holidays and weekends, and has scheduled the project activities efficiently to minimize any risk on project completion. The Calendars used in this project are:

- **FDOT 7 Day Calendar:** the calendar is based on 7-day week and is assigned on milestones and procurement activities.
- **FDOT 5 Day Calendar:** the calendar is based on 5-day week and recognizes weekends and federal holidays as non-working days and is assigned to construction activities.

2021 Federal Holidays:

Date	Holiday
Friday, January 1	New Year's Day
Monday, January 18	Birthday of Martin Luther King, Jr.
Wednesday, January 20	Inauguration Day
Monday, February 15	Washington's Birthday
Monday, May 31	Memorial Day
Friday, June 18	Juneteenth National Independence Day
Monday, July 5	Independence Day
Monday, September 6	Labor Day
Monday, October 11	Columbus Day
Thursday, November 11	Veterans Day
Thursday, November 25	Thanksgiving Day
Friday, December 24	Christmas Day

2022 Federal Holidays:

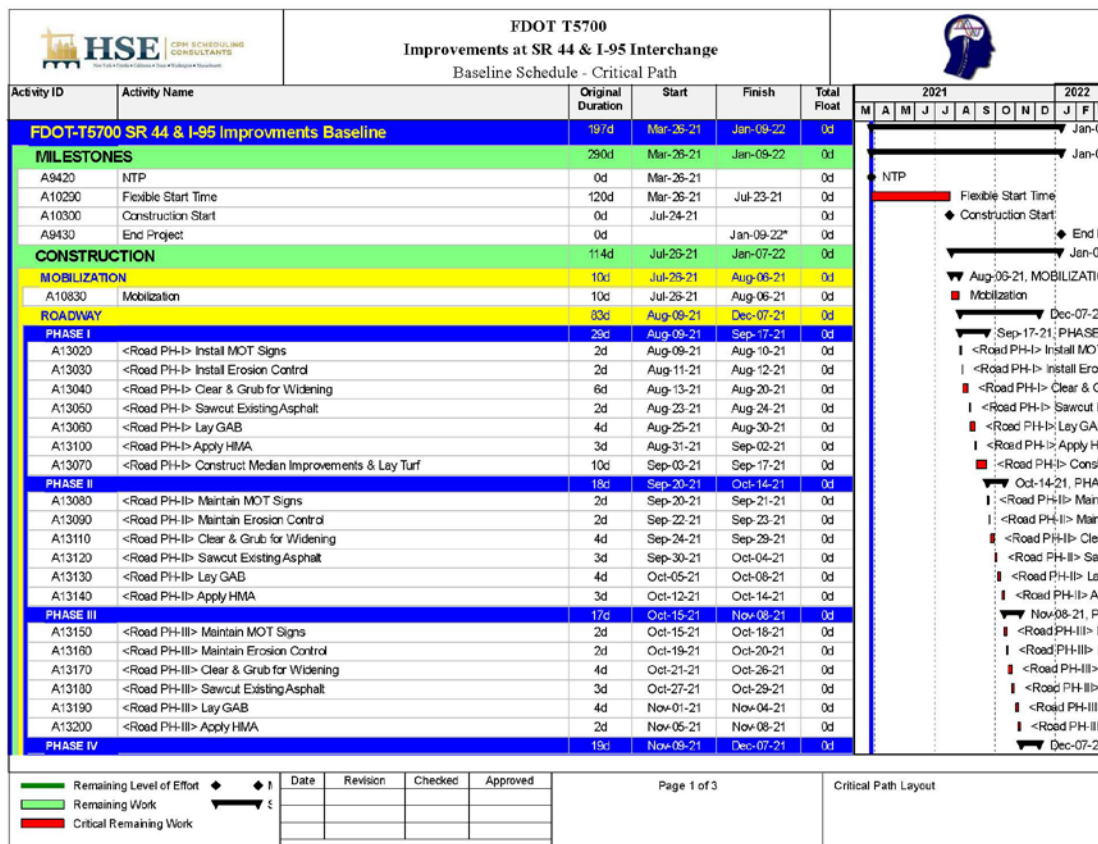
Date	Holiday
Friday, December 31, 2021	New Year's Day
Monday, January 17	Birthday of Martin Luther King, Jr.
Monday, February 21	Washington's Birthday
Monday, May 30	Memorial Day
Monday, June 20	Juneteenth National Independence Day
Monday, July 4	Independence Day
Monday, September 5	Labor Day
Monday, October 10	Columbus Day
Friday, November 11	Veterans Day
Thursday, November 24	Thanksgiving Day
Monday, December 26	Christmas Day



6. Working hours



The working hours are 8 hours per day, totalling 40 hours per week and 172 hours per month. These work durations have been used throughout all scheduled construction activities to calculate durations and remaining time to complete.

7. Critical path

The critical path of the project starts with mobilization and then moves on to roadway works moving from Phase I through to Phase IV followed by WWDS related to Phase IV and then close out, as detailed below.



		FDOT T5700 Improvements at SR 44 & I-95 Interchange Baseline Schedule - Critical Path																	
Activity ID	Activity Name	Original Duration	Start	Finish	Total Float	2021 M A M J J A S O N D J F												2022	
A13210	<Road PH-IV> Maintain MOT Signs	2d	Nov-09-21	Nov-10-21	0d														<Road PH-IV
A13220	<Road PH-IV> Maintain Erosion Control	2d	Nov-12-21	Nov-15-21	0d														<Road PH-IV
A13230	<Road PH-IV> Clear & Grub for Widening	4d	Nov-16-21	Nov-19-21	0d														<Road PH-IV
A13240	<Road PH-IV> Sawcut Existing Asphalt	3d	Nov-22-21	Nov-24-21	0d														<Road PH-IV
A13250	<Road PH-IV> Lay GAB	6d	Nov-26-21	Dec-03-21	0d														<Road PH-IV
A13260	<Road PH-IV> Apply HMA	2d	Dec-06-21	Dec-07-21	0d														<Road PH-IV
WRONG WAY DETECTION		18d	Dec-08-21	Jan-04-22	0d														<Road PH-IV
195 SB EXIT TO SR 44 EB (PHASE IV)		18d	Dec-08-21	Jan-04-22	0d														<Road PH-IV
A12330	<WWDS 195 SB to SR 44 EB> Install Conduits	1d	Dec-08-21	Dec-08-21	0d														<WWDS
A12340	<WWDS 195 SB to SR 44 EB> Install Fiber Optic Cables	1d	Dec-09-21	Dec-09-21	0d														<WWDS
A12350	<WWDS 195 SB to SR 44 EB> Install Pull & Splice Boxes	1d	Dec-09-21	Dec-09-21	0d														<WWDS
A12370	<WWDS 195 SB to SR 44 EB> Splice Fiber Optic Cables	2d	Dec-10-21	Dec-13-21	0d														<WWDS
A12380	<WWDS 195 SB to SR 44 EB> Install Fiber Optic Connector & Patch Panels	1d	Dec-14-21	Dec-14-21	0d														<WWDS
A12390	<WWDS 195 SB to SR 44 EB> Install Multi-Conductor Communication Cables	1d	Dec-15-21	Dec-15-21	0d														<WWDS
A12400	<WWDS 195 SB to SR 44 EB> Install Electrical Service Wires	1d	Dec-16-21	Dec-16-21	0d														<WWDS
A12410	<WWDS 195 SB to SR 44 EB> Install Electrical Service Disconnect	1d	Dec-17-21	Dec-17-21	0d														<WWDS
A12420	<WWDS 195 SB to SR 44 EB> Install Electrical Power Service Transformer	1d	Dec-17-21	Dec-17-21	0d														<WWDS
A12430	<WWDS 195 SB to SR 44 EB> Install Prestressed Concrete Poles	2d	Dec-20-21	Dec-21-21	0d														<WWDS
A12440	<WWDS 195 SB to SR 44 EB> Install Wrong Way Vehicle Detection System	1d	Dec-22-21	Dec-22-21	0d														<WWDS
A12450	<WWDS 195 SB to SR 44 EB> Install ITS Cabinet	3d	Dec-23-21	Dec-26-21	0d														<WWDS
A12480	<WWDS 195 SB to SR 44 EB> Install UPS	1d	Dec-29-21	Dec-29-21	0d														<WWDS
A12490	<WWDS 195 SB to SR 44 EB> Install Signs	1d	Dec-30-21	Dec-30-21	0d														<WWDS
A12500	<WWDS 195 SB to SR 44 EB> Install Raised Pavement Markers	1d	Jan-03-22	Jan-03-22	0d														<WWDS
A12610	<WWDS 195 SB to SR 44 EB> Apply Thermoplastic Pavement Markings	1d	Jan-04-22	Jan-04-22	0d														<WWDS
195 NB EXIT TO SR 44 EB (PHASE IV)		18d	Dec-08-21	Jan-04-22	0d														<WWDS
A12710	<WWDS 195 NB to SR 44 EB> Install Conduits	1d	Dec-08-21	Dec-08-21	0d														<WWDS
A12720	<WWDS 195 NB to SR 44 EB> Install Fiber Optic Cables	1d	Dec-09-21	Dec-09-21	0d														<WWDS
A12730	<WWDS 195 NB to SR 44 EB> Install Pull & Splice Boxes	1d	Dec-09-21	Dec-09-21	0d														<WWDS
A12750	<WWDS 195 NB to SR 44 EB> Splice Fiber Optic Cables	2d	Dec-10-21	Dec-13-21	0d														<WWDS
A12760	<WWDS 195 NB to SR 44 EB> Install Fiber Optic Connector & Patch Panels	1d	Dec-14-21	Dec-14-21	0d														<WWDS
A12770	<WWDS 195 NB to SR 44 EB> Install Multi-Conductor Communication Cables	1d	Dec-15-21	Dec-15-21	0d														<WWDS
A12780	<WWDS 195 NB to SR 44 EB> Install Electrical Service Wires	1d	Dec-16-21	Dec-16-21	0d														<WWDS
A12790	<WWDS 195 NB to SR 44 EB> Install Electrical Service Disconnect	1d	Dec-17-21	Dec-17-21	0d														<WWDS
A12800	<WWDS 195 NB to SR 44 EB> Install Electrical Power Service Transformer	1d	Dec-17-21	Dec-17-21	0d														<WWDS
CLOSE OUT		3d	Jan-05-22	Jan-07-22	0d														<WWDS
A11270	Testing & Commissioning and Final Inspection	3d	Jan-05-22	Jan-07-22	0d														<WWDS

		FDOT T5700 Improvements at SR 44 & I-95 Interchange Baseline Schedule - Critical Path																	
Activity ID	Activity Name	Original Duration	Start	Finish	Total Float	2021 M A M J J A S O N D J F												2022	
A12810	<WWDS 195 NB to SR 44 EB> Install Prestressed Concrete Poles	2d	Dec-20-21	Dec-21-21	0d														<WWDS
A12820	<WWDS 195 NB to SR 44 EB> Install Wrong Way Vehicle Detection System	2d	Dec-22-21	Dec-23-21	0d														<WWDS
A12830	<WWDS 195 NB to SR 44 EB> Install ITS Cabinet	2d	Dec-27-21	Dec-28-21	0d														<WWDS
A12860	<WWDS 195 NB to SR 44 EB> Install UPS	1d	Dec-29-21	Dec-29-21	0d														<WWDS
A12870	<WWDS 195 NB to SR 44 EB> Install Signs	1d	Dec-30-21	Dec-30-21	0d														<WWDS
A12880	<WWDS 195 NB to SR 44 EB> Install Raised Pavement Markers	1d	Jan-03-22	Jan-03-22	0d														<WWDS
A12890	<WWDS 195 NB to SR 44 EB> Apply Thermoplastic Pavement Markings	1d	Jan-04-22	Jan-04-22	0d														<WWDS
CLOSE OUT		3d	Jan-05-22	Jan-07-22	0d														<WWDS
A11270	Testing & Commissioning and Final Inspection	3d	Jan-05-22	Jan-07-22	0d														<WWDS

8. Conclusion

The project poses a number of challenges that have been successfully identified by the contractor as demonstrated in the detailed sequencing operations of the schedule and this narrative report.

The overall strategy is to start the roadway works first to complete the rough scope in the beginning of the project and then to clear the grounds for finer items such as electrical works and communications works for the signalization and WWDS to follow, all done with respect to the phasing strategy issued in the design drawings.

The schedule is built using Primavera (P6), with detailed activities down to the specific task to be executed on the job site.

9. Schedule Log

Scheduling/Leveling Report - 2021-12-17 09:38:31 - PM.EXE

=====

Default Project.....FDOT-T5700-BL-1

Projects:

FDOT-T5700-BL-1.....FDOT-T5700 SR 44 & I-95
 Improvments Baseline

Scheduling/Leveling Settings:

General

SchedulingYes

LevelingNo

Ignore relationships to and from other projectsNo

Make open-ended activities criticalNo

Use Expected Finish DatesYes

Schedule automatically when a change affects datesNo

Level resources during schedulingNo

Recalculate assignment costs after schedulingNo
 When scheduling progressed activities useRetained Logic
 Calculate start-to-start lag fromEarly Start
 Define critical activities as Total Float less than or equal to .0
 Compute Total Float AsFinish Float
 Calculate float based on finish date ofEach project
 Calendar for scheduling Relationship LagPredecessor Activity Calendar

Advanced

Calculate multiple float paths.....Yes
 Calculate multiple float paths using.....Total Float
 Number of paths to calculate.....10

Statistics:

Projects.....1
 # Activities.....249
 # Not Started.....249
 # In Progress.....0
 # Completed.....0
 # Relationships.....386
 # Activities with Constraint.....1

Project: FDOT-T5700-BL-1 Activity: A9430 End Project

Errors:

Warnings:

Activities without predecessors.....1

Project: FDOT-T5700-BL-1 Activity: A9420 NTP

Activities without successors.....1

Project: FDOT-T5700-BL-1 Activity: A9430 End Project

Out-of-sequence activities.....0

Activities with Actual Dates > Data Date.....0

Milestone Activities with invalid relationships.....0

Finish milestone and predecessors have different calendars.....0

Scheduling/Leveling Results:

Projects Scheduled/Leveled.....1

Activities Scheduled/Leveled.....249

Relationships with other projects.....0

Data Date.....Mar-26-21

Earliest Early Start Date.....Mar-26-21

Latest Early Finish Date.....Jan-09-22

Number of float paths.....10

Exceptions:

Critical Activities.....63

Project: FDOT-T5700-BL-1 Activity: A10290 Flexible Start Time

Project: FDOT-T5700-BL-1 Activity: A10300 Construction Start

Project: FDOT-T5700-BL-1 Activity: A10830 Mobilization

Project: FDOT-T5700-BL-1 Activity: A11270 Testing &

Commissioning and Final Inspection

44 EB> Install Conduits	Project: FDOT-T5700-BL-1	Activity: A12330	<WWDS I95 SB to SR
44 EB> Install Fiber Optic Cables	Project: FDOT-T5700-BL-1	Activity: A12340	<WWDS I95 SB to SR
44 EB> Install Pull & Splice Boxes	Project: FDOT-T5700-BL-1	Activity: A12350	<WWDS I95 SB to SR
44 EB> Splice Fiber Optic Cables	Project: FDOT-T5700-BL-1	Activity: A12370	<WWDS I95 SB to SR
44 EB> Install Fiber Optic Connector & Patch Panels	Project: FDOT-T5700-BL-1	Activity: A12380	<WWDS I95 SB to SR
44 EB> Install Multi-Conductor Communication Cables	Project: FDOT-T5700-BL-1	Activity: A12390	<WWDS I95 SB to SR
44 EB> Install Electrical Service Wires	Project: FDOT-T5700-BL-1	Activity: A12400	<WWDS I95 SB to SR
44 EB> Install Electrical Service Disconnect	Project: FDOT-T5700-BL-1	Activity: A12410	<WWDS I95 SB to SR
44 EB> Install Electrical Power Service Transformer	Project: FDOT-T5700-BL-1	Activity: A12420	<WWDS I95 SB to SR
44 EB> Install Prestressed Concrete Poles	Project: FDOT-T5700-BL-1	Activity: A12430	<WWDS I95 SB to SR
44 EB> Install Wrong Way Vehicle Detection System	Project: FDOT-T5700-BL-1	Activity: A12440	<WWDS I95 SB to SR
44 EB> Install ITS Cabinet	Project: FDOT-T5700-BL-1	Activity: A12450	<WWDS I95 SB to SR
44 EB> Install UPS	Project: FDOT-T5700-BL-1	Activity: A12480	<WWDS I95 SB to SR
44 EB> Install Signs	Project: FDOT-T5700-BL-1	Activity: A12490	<WWDS I95 SB to SR
44 EB> Install Raised Pavement Markers	Project: FDOT-T5700-BL-1	Activity: A12500	<WWDS I95 SB to SR
44 EB> Apply Thermoplastic Pavement Markings	Project: FDOT-T5700-BL-1	Activity: A12510	<WWDS I95 SB to SR
44 EB> Install Conduits	Project: FDOT-T5700-BL-1	Activity: A12710	<WWDS I95 NB to SR
44 EB> Install Fiber Optic Cables	Project: FDOT-T5700-BL-1	Activity: A12720	<WWDS I95 NB to SR

Project:	FDOT-T5700-BL-1	Activity:	A12730	<WWDS I95 NB to SR
44 EB> Install Pull & Splice Boxes				
Project:	FDOT-T5700-BL-1	Activity:	A12750	<WWDS I95 NB to SR
44 EB> Splice Fiber Optic Cables				
Project:	FDOT-T5700-BL-1	Activity:	A12760	<WWDS I95 NB to SR
44 EB> Install Fiber Optic Connector & Patch Panels				
Project:	FDOT-T5700-BL-1	Activity:	A12770	<WWDS I95 NB to SR
44 EB> Install Multi-Conductor Communication Cables				
Project:	FDOT-T5700-BL-1	Activity:	A12780	<WWDS I95 NB to SR
44 EB> Install Electrical Service Wires				
Project:	FDOT-T5700-BL-1	Activity:	A12790	<WWDS I95 NB to SR
44 EB> Install Electrical Service Disconnect				
Project:	FDOT-T5700-BL-1	Activity:	A12800	<WWDS I95 NB to SR
44 EB> Install Electrical Power Service Transformer				
Project:	FDOT-T5700-BL-1	Activity:	A12810	<WWDS I95 NB to SR
44 EB> Install Prestressed Concrete Poles				
Project:	FDOT-T5700-BL-1	Activity:	A12820	<WWDS I95 NB to SR
44 EB> Install Wrong Way Vehicle Detection System				
Project:	FDOT-T5700-BL-1	Activity:	A12830	<WWDS I95 NB to SR
44 EB> Install ITS Cabinet				
Project:	FDOT-T5700-BL-1	Activity:	A12860	<WWDS I95 NB to SR
44 EB> Install UPS				
Project:	FDOT-T5700-BL-1	Activity:	A12870	<WWDS I95 NB to SR
44 EB> Install Signs				
Project:	FDOT-T5700-BL-1	Activity:	A12880	<WWDS I95 NB to SR
44 EB> Install Raised Pavement Markers				
Project:	FDOT-T5700-BL-1	Activity:	A12890	<WWDS I95 NB to SR
44 EB> Apply Thermoplastic Pavement Markings				
Project:	FDOT-T5700-BL-1	Activity:	A13020	<Road PH-I> Install
MOT Signs				
Project:	FDOT-T5700-BL-1	Activity:	A13030	<Road PH-I> Install
Erosion Control				
Project:	FDOT-T5700-BL-1	Activity:	A13040	<Road PH-I> Clear &
Grub for Widening				
Project:	FDOT-T5700-BL-1	Activity:	A13050	<Road PH-I> Sawcut
Existing Asphalt				

	Project:	FDOT-T5700-BL-1	Activity:	A13060	<Road PH-I> Lay GAB
Median Improvements & Lay Turf	Project:	FDOT-T5700-BL-1	Activity:	A13070	<Road PH-I> Construct
MOT Signs	Project:	FDOT-T5700-BL-1	Activity:	A13080	<Road PH-II> Maintain
Erosion Control	Project:	FDOT-T5700-BL-1	Activity:	A13090	<Road PH-II> Maintain
HMA	Project:	FDOT-T5700-BL-1	Activity:	A13100	<Road PH-I> Apply
Grub for Widening	Project:	FDOT-T5700-BL-1	Activity:	A13110	<Road PH-II> Clear &
Existing Asphalt	Project:	FDOT-T5700-BL-1	Activity:	A13120	<Road PH-II> Sawcut
	Project:	FDOT-T5700-BL-1	Activity:	A13130	<Road PH-II> Lay GAB
HMA	Project:	FDOT-T5700-BL-1	Activity:	A13140	<Road PH-II> Apply
MOT Signs	Project:	FDOT-T5700-BL-1	Activity:	A13150	<Road PH-III> Maintain
Erosion Control	Project:	FDOT-T5700-BL-1	Activity:	A13160	<Road PH-III> Maintain
Grub for Widening	Project:	FDOT-T5700-BL-1	Activity:	A13170	<Road PH-III> Clear &
Existing Asphalt	Project:	FDOT-T5700-BL-1	Activity:	A13180	<Road PH-III> Sawcut
GAB	Project:	FDOT-T5700-BL-1	Activity:	A13190	<Road PH-III> Lay
HMA	Project:	FDOT-T5700-BL-1	Activity:	A13200	<Road PH-III> Apply
Maintain MOT Signs	Project:	FDOT-T5700-BL-1	Activity:	A13210	<Road PH-IV>
Maintain Erosion Control	Project:	FDOT-T5700-BL-1	Activity:	A13220	<Road PH-IV>
Grub for Widening	Project:	FDOT-T5700-BL-1	Activity:	A13230	<Road PH-IV> Clear &
Existing Asphalt	Project:	FDOT-T5700-BL-1	Activity:	A13240	<Road PH-IV> Sawcut

GAB	Project:	FDOT-T5700-BL-1	Activity:	A13250	<Road PH-IV> Lay
HMA	Project:	FDOT-T5700-BL-1	Activity:	A13260	<Road PH-IV> Apply
	Project:	FDOT-T5700-BL-1	Activity:	A9420	NTP
	Project:	FDOT-T5700-BL-1	Activity:	A9430	End Project
Activities with unsatisfied constraints.....0					
Activities with unsatisfied relationships.....0					
Activities with external dates.....0					
Activities that are not on any float paths.....166					
Pavement Marker	Project:	FDOT-T5700-BL-1	Activity:	A10000	<Rev & App> Raised
Thermoplastic Pavement Marker	Project:	FDOT-T5700-BL-1	Activity:	A10010	<Rev & App>
Cable	Project:	FDOT-T5700-BL-1	Activity:	A10020	<Fab & Del> Signal
Optic Cable	Project:	FDOT-T5700-BL-1	Activity:	A10030	<Fab & Del> Fiber
Panel	Project:	FDOT-T5700-BL-1	Activity:	A10040	<Fab & Del> Patch
Connector Panel	Project:	FDOT-T5700-BL-1	Activity:	A10050	<Fab & Del>
Conductor Cable	Project:	FDOT-T5700-BL-1	Activity:	A10060	<Fab & Del> Multi
Splice Box	Project:	FDOT-T5700-BL-1	Activity:	A10070	<Fab & Del> Pull &
Power Service Meter	Project:	FDOT-T5700-BL-1	Activity:	A10080	<Fab & Del> Electrical
Service Wire	Project:	FDOT-T5700-BL-1	Activity:	A10090	<Fab & Del> Electrical

Service Disconnect	Project:	FDOT-T5700-BL-1	Activity:	A10100	<Fab & Del> Electrical
Transformer	Project:	FDOT-T5700-BL-1	Activity:	A10110	<Fab & Del>
Prestressed Concrete Pole	Project:	FDOT-T5700-BL-1	Activity:	A10120	<Fab & Del>
Pole	Project:	FDOT-T5700-BL-1	Activity:	A10130	<Fab & Del> Aluminum
Mast Arm	Project:	FDOT-T5700-BL-1	Activity:	A10140	<Fab & Del> Steel
Traffic Signal	Project:	FDOT-T5700-BL-1	Activity:	A10150	<Fab & Del> Vehicular
Loop Detector	Project:	FDOT-T5700-BL-1	Activity:	A10160	<Fab & Del> Inductive
Loop	Project:	FDOT-T5700-BL-1	Activity:	A10170	<Fab & Del> Inductive
Way Detection System	Project:	FDOT-T5700-BL-1	Activity:	A10180	<Fab & Del> Wrong
Priority & Preemption System	Project:	FDOT-T5700-BL-1	Activity:	A10190	<Fab & Del> Signal
Controller	Project:	FDOT-T5700-BL-1	Activity:	A10200	<Fab & Del> Traffic
Cabinet	Project:	FDOT-T5700-BL-1	Activity:	A10210	<Fab & Del> ITS
Camera	Project:	FDOT-T5700-BL-1	Activity:	A10220	<Fab & Del> CCTV
Switch	Project:	FDOT-T5700-BL-1	Activity:	A10230	<Fab & Del> Ethernet
Converter	Project:	FDOT-T5700-BL-1	Activity:	A10240	<Fab & Del> Media
	Project:	FDOT-T5700-BL-1	Activity:	A10250	<Fab & Del> UPS
	Project:	FDOT-T5700-BL-1	Activity:	A10260	<Fab & Del> Signs
Pavement Marker	Project:	FDOT-T5700-BL-1	Activity:	A10270	<Fab & Del> Raised
Thermoplastic Pavement Marker	Project:	FDOT-T5700-BL-1	Activity:	A10280	<Fab & Del>

for Lighting	Project:	FDOT-T5700-BL-1	Activity:	A10850	<Light> Install Conduits
Splice Boxes for Lighting	Project:	FDOT-T5700-BL-1	Activity:	A10860	<Light> Install Pull &
Conductors	Project:	FDOT-T5700-BL-1	Activity:	A10870	<Light> Install Lighting
Pole	Project:	FDOT-T5700-BL-1	Activity:	A10880	<Light> Relocate Light
Conductors	Project:	FDOT-T5700-BL-1	Activity:	A10890	<Prep & Sub> Lighting
Conductors	Project:	FDOT-T5700-BL-1	Activity:	A10900	<Rev & App> Lighting
Conductors	Project:	FDOT-T5700-BL-1	Activity:	A10910	<Fab & Del> Lighting
Install Conduits	Project:	FDOT-T5700-BL-1	Activity:	A11780	<Sign SR44 WB>
Install Signal Cables	Project:	FDOT-T5700-BL-1	Activity:	A11790	<Sign SR44 WB>
Remove Existing Signal Cables	Project:	FDOT-T5700-BL-1	Activity:	A11800	<Sign SR44 WB>
Install Multi-Conductor Communication Cables	Project:	FDOT-T5700-BL-1	Activity:	A11810	<Sign SR44 WB>
Install Pull & Splice Boxes	Project:	FDOT-T5700-BL-1	Activity:	A11820	<Sign SR44 WB>
Install Electrical Service Wires	Project:	FDOT-T5700-BL-1	Activity:	A11830	<Sign SR44 WB>
Install Electrical Service Disconnect	Project:	FDOT-T5700-BL-1	Activity:	A11840	<Sign SR44 WB>
Install Prestressed Concrete Poles	Project:	FDOT-T5700-BL-1	Activity:	A11850	<Sign SR44 WB>
Remove Existing Prestressed Concrete Poles	Project:	FDOT-T5700-BL-1	Activity:	A11860	<Sign SR44 WB>
Install Aluminum Signal Poles	Project:	FDOT-T5700-BL-1	Activity:	A11870	<Sign SR44 WB>
Remove Existing Aluminum Signal Poles	Project:	FDOT-T5700-BL-1	Activity:	A11880	<Sign SR44 WB>

Project:	FDOT-T5700-BL-1	Activity:	A11890	<Sign SR44 WB>
Install Steel Mast Arm				
Project:	FDOT-T5700-BL-1	Activity:	A11900	<Sign SR44 WB>
Install Aluminum Vehicular Traffic Signals				
Project:	FDOT-T5700-BL-1	Activity:	A11910	<Sign SR44 WB>
Install Inductive Loop Detector				
Project:	FDOT-T5700-BL-1	Activity:	A11920	<Sign SR44 WB>
Install Inductive Loop				
Project:	FDOT-T5700-BL-1	Activity:	A11930	<Sign SR44 WB>
Relocate Vehicle Detection System Equipment				
Project:	FDOT-T5700-BL-1	Activity:	A11940	<Sign SR44 WB>
Install Signal Priority & Preemption System				
Project:	FDOT-T5700-BL-1	Activity:	A11950	<Sign SR44 WB>
Install Traffic Controller				
Project:	FDOT-T5700-BL-1	Activity:	A11960	<Sign SR44 WB>
Remove Existing Traffic Controller				
Project:	FDOT-T5700-BL-1	Activity:	A11970	<Sign SR44 WB>
Relocate System Control Equipment				
Project:	FDOT-T5700-BL-1	Activity:	A11980	<Sign SR44 WB>
Install ITS CCTV Cameras				
Project:	FDOT-T5700-BL-1	Activity:	A11990	<Sign SR44 WB>
Install UPS				
Project:	FDOT-T5700-BL-1	Activity:	A12000	<Sign SR44 WB>
Install Signs				
Project:	FDOT-T5700-BL-1	Activity:	A12020	<Sign SR44 EB> Install
Conduits				
Project:	FDOT-T5700-BL-1	Activity:	A12030	<Sign SR44 EB> Install
Signal Cables				
Project:	FDOT-T5700-BL-1	Activity:	A12040	<Sign SR44 EB>
Remove Existing Signal Cables				
Project:	FDOT-T5700-BL-1	Activity:	A12050	<Sign SR44 EB> Install
Multi-Conductor Communication Cables				
Project:	FDOT-T5700-BL-1	Activity:	A12060	<Sign SR44 EB> Install
Pull & Splice Boxes				
Project:	FDOT-T5700-BL-1	Activity:	A12070	<Sign SR44 EB> Install
Electrical Service Wires				

Electrical Service Disconnect	Project: FDOT-T5700-BL-1	Activity: A12080	<Sign SR44 EB> Install
Prestressed Concrete Poles	Project: FDOT-T5700-BL-1	Activity: A12090	<Sign SR44 EB> Install
Remove Existing Prestressed Concrete Poles	Project: FDOT-T5700-BL-1	Activity: A12100	<Sign SR44 EB>
Aluminum Signal Poles	Project: FDOT-T5700-BL-1	Activity: A12110	<Sign SR44 EB> Install
Remove Existing Aluminum Signal Poles	Project: FDOT-T5700-BL-1	Activity: A12120	<Sign SR44 EB>
Steel Mast Arm	Project: FDOT-T5700-BL-1	Activity: A12130	<Sign SR44 EB> Install
Aluminum Vehicular Traffic Signals	Project: FDOT-T5700-BL-1	Activity: A12140	<Sign SR44 EB> Install
Inductive Loop Detector	Project: FDOT-T5700-BL-1	Activity: A12150	<Sign SR44 EB> Install
Inductive Loop	Project: FDOT-T5700-BL-1	Activity: A12160	<Sign SR44 EB> Install
Relocate Vehicle Detection System Equipment	Project: FDOT-T5700-BL-1	Activity: A12170	<Sign SR44 EB>
Signal Priority & Preemption System	Project: FDOT-T5700-BL-1	Activity: A12180	<Sign SR44 EB> Install
Traffic Controller	Project: FDOT-T5700-BL-1	Activity: A12190	<Sign SR44 EB> Install
Remove Existing Traffic Controller	Project: FDOT-T5700-BL-1	Activity: A12200	<Sign SR44 EB>
Relocate System Control Equipment	Project: FDOT-T5700-BL-1	Activity: A12210	<Sign SR44 EB>
ITS CCTV Cameras	Project: FDOT-T5700-BL-1	Activity: A12220	<Sign SR44 EB> Install
UPS	Project: FDOT-T5700-BL-1	Activity: A12230	<Sign SR44 EB> Install
Signs	Project: FDOT-T5700-BL-1	Activity: A12240	<Sign SR44 EB> Install
Remove Existing Light Pole	Project: FDOT-T5700-BL-1	Activity: A12250	<Sign SR44 EB>

Conduits	Project:	FDOT-T5700-BL-1	Activity:	A12260	<Comm> Install
Optic Cables	Project:	FDOT-T5700-BL-1	Activity:	A12270	<Comm> Install Fiber
Existing Fiber Optic Cables	Project:	FDOT-T5700-BL-1	Activity:	A12280	<Comm> Remove
Optic Cables	Project:	FDOT-T5700-BL-1	Activity:	A12290	<Comm> Splice Fiber
Optic Patch Panel	Project:	FDOT-T5700-BL-1	Activity:	A12300	<Comm> Install Fiber
Splice Boxes	Project:	FDOT-T5700-BL-1	Activity:	A12310	<Comm> Install Pull &
Managed Ethernet Switches	Project:	FDOT-T5700-BL-1	Activity:	A12320	<Comm> Install Field
44 EB> Remove Existing Fiber Optic Cables	Project:	FDOT-T5700-BL-1	Activity:	A12360	<WWDS I95 SB to SR
44 WB> Install Conduits	Project:	FDOT-T5700-BL-1	Activity:	A12520	<WWDS I95 SB to SR
44 WB> Install Fiber Optic Cables	Project:	FDOT-T5700-BL-1	Activity:	A12530	<WWDS I95 SB to SR
44 WB> Install Pull & Splice Boxes	Project:	FDOT-T5700-BL-1	Activity:	A12540	<WWDS I95 SB to SR
44 WB> Remove Existing Fiber Optic Cables	Project:	FDOT-T5700-BL-1	Activity:	A12550	<WWDS I95 SB to SR
44 WB> Splice Fiber Optic Cables	Project:	FDOT-T5700-BL-1	Activity:	A12560	<WWDS I95 SB to SR
44 WB> Install Fiber Optic Connector & Patch Panels	Project:	FDOT-T5700-BL-1	Activity:	A12570	<WWDS I95 SB to SR
44 WB> Install Multi-Conductor Communication Cables	Project:	FDOT-T5700-BL-1	Activity:	A12580	<WWDS I95 SB to SR
44 WB> Install Electrical Service Wires	Project:	FDOT-T5700-BL-1	Activity:	A12590	<WWDS I95 SB to SR
44 WB> Install Electrical Service Disconnect	Project:	FDOT-T5700-BL-1	Activity:	A12600	<WWDS I95 SB to SR
44 WB> Install Electrical Power Service Transformer	Project:	FDOT-T5700-BL-1	Activity:	A12610	<WWDS I95 SB to SR

44 WB> Install Prestressed Concrete Poles	Project: FDOT-T5700-BL-1	Activity: A12620	<WWDS I95 SB to SR
44 WB> Install Wrong Way Vehicle Detection System	Project: FDOT-T5700-BL-1	Activity: A12630	<WWDS I95 SB to SR
44 WB> Install ITS Cabinet	Project: FDOT-T5700-BL-1	Activity: A12640	<WWDS I95 SB to SR
44 WB> Install ITS CCTV Cameras	Project: FDOT-T5700-BL-1	Activity: A12650	<WWDS I95 SB to SR
44 WB> Install Field Managed Ethernet Switches	Project: FDOT-T5700-BL-1	Activity: A12660	<WWDS I95 SB to SR
44 WB> Install UPS	Project: FDOT-T5700-BL-1	Activity: A12670	<WWDS I95 SB to SR
44 WB> Install Signs	Project: FDOT-T5700-BL-1	Activity: A12680	<WWDS I95 SB to SR
44 WB> Install Raised Pavement Markers	Project: FDOT-T5700-BL-1	Activity: A12690	<WWDS I95 SB to SR
44 WB> Apply Thermoplastic Pavement Markings	Project: FDOT-T5700-BL-1	Activity: A12700	<WWDS I95 SB to SR
44 EB> Remove Existing Fiber Optic Cables	Project: FDOT-T5700-BL-1	Activity: A12740	<WWDS I95 NB to SR
Install Pull & Splice Boxes	Project: FDOT-T5700-BL-1	Activity: A12920	<WWDS SR 44 EB>
Cable	Project: FDOT-T5700-BL-1	Activity: A9440	<Rev & App> Conduits
	Project: FDOT-T5700-BL-1	Activity: A9450	<Fab & Del> Conduits
	Project: FDOT-T5700-BL-1	Activity: A9460	<Prep & Sub> Signal Cable
	Project: FDOT-T5700-BL-1	Activity: A9470	<Prep & Sub> Fiber Optic
Panel	Project: FDOT-T5700-BL-1	Activity: A9480	<Prep & Sub> Patch Panel
	Project: FDOT-T5700-BL-1	Activity: A9490	<Prep & Sub> Connector
Cable	Project: FDOT-T5700-BL-1	Activity: A9500	<Prep & Sub> Multi Conductor
Box	Project: FDOT-T5700-BL-1	Activity: A9510	<Prep & Sub> Pull & Splice
Service Meter	Project: FDOT-T5700-BL-1	Activity: A9520	<Prep & Sub> Electrical Power

Service Wire	Project:	FDOT-T5700-BL-1	Activity:	A9530 <Prep & Sub> Electrical
Service Disconnect	Project:	FDOT-T5700-BL-1	Activity:	A9540 <Prep & Sub> Electrical
Concrete Pole	Project:	FDOT-T5700-BL-1	Activity:	A9550 <Prep & Sub> Transformer
	Project:	FDOT-T5700-BL-1	Activity:	A9560 <Prep & Sub> Prestressed
	Project:	FDOT-T5700-BL-1	Activity:	A9570 <Prep & Sub> Aluminum Pole
	Project:	FDOT-T5700-BL-1	Activity:	A9580 <Prep & Sub> Steel Mast Arm
Traffic Signal	Project:	FDOT-T5700-BL-1	Activity:	A9590 <Prep & Sub> Vehicular
Detector	Project:	FDOT-T5700-BL-1	Activity:	A9600 <Prep & Sub> Inductive Loop
	Project:	FDOT-T5700-BL-1	Activity:	A9610 <Prep & Sub> Inductive Loop
Detection System	Project:	FDOT-T5700-BL-1	Activity:	A9620 <Prep & Sub> Wrong Way
Preemption System	Project:	FDOT-T5700-BL-1	Activity:	A9630 <Prep & Sub> Signal Priority &
Controller	Project:	FDOT-T5700-BL-1	Activity:	A9640 <Prep & Sub> Traffic
	Project:	FDOT-T5700-BL-1	Activity:	A9650 <Prep & Sub> ITS Cabinet
	Project:	FDOT-T5700-BL-1	Activity:	A9660 <Prep & Sub> CCTV Camera
	Project:	FDOT-T5700-BL-1	Activity:	A9670 <Prep & Sub> Ethernet Switch
Converter	Project:	FDOT-T5700-BL-1	Activity:	A9680 <Prep & Sub> Media
	Project:	FDOT-T5700-BL-1	Activity:	A9690 <Prep & Sub> UPS
	Project:	FDOT-T5700-BL-1	Activity:	A9700 <Prep & Sub> Signs
Pavement Marker	Project:	FDOT-T5700-BL-1	Activity:	A9730 <Prep & Sub> Raised
Pavement Marker	Project:	FDOT-T5700-BL-1	Activity:	A9740 <Prep & Sub> Thermoplastic
	Project:	FDOT-T5700-BL-1	Activity:	A9750 <Rev & App> Signal Cable
Cable	Project:	FDOT-T5700-BL-1	Activity:	A9760 <Rev & App> Fiber Optic

Cable	Project:	FDOT-T5700-BL-1	Activity:	A9770 <Rev & App> Patch Panel
	Project:	FDOT-T5700-BL-1	Activity:	A9780 <Rev & App> Connector Panel
	Project:	FDOT-T5700-BL-1	Activity:	A9790 <Rev & App> Multi Conductor
Box	Project:	FDOT-T5700-BL-1	Activity:	A9800 <Rev & App> Pull & Splice
	Project:	FDOT-T5700-BL-1	Activity:	A9810 <Rev & App> Electrical Power
	Project:	FDOT-T5700-BL-1	Activity:	A9820 <Rev & App> Electrical
Service Meter	Project:	FDOT-T5700-BL-1	Activity:	A9830 <Rev & App> Electrical
	Project:	FDOT-T5700-BL-1	Activity:	A9840 <Rev & App> Transformer
	Project:	FDOT-T5700-BL-1	Activity:	A9850 <Rev & App> Prestressed
Service Wire	Project:	FDOT-T5700-BL-1	Activity:	A9860 <Rev & App> Aluminum Pole
	Project:	FDOT-T5700-BL-1	Activity:	A9870 <Rev & App> Steel Mast Arm
	Project:	FDOT-T5700-BL-1	Activity:	A9880 <Rev & App> Vehicular Traffic
Concrete Pole	Project:	FDOT-T5700-BL-1	Activity:	A9890 <Rev & App> Inductive Loop
	Project:	FDOT-T5700-BL-1	Activity:	A9900 <Rev & App> Inductive Loop
	Project:	FDOT-T5700-BL-1	Activity:	A9910 <Rev & App> Wrong Way
Signal	Project:	FDOT-T5700-BL-1	Activity:	A9920 <Rev & App> Signal Priority &
	Project:	FDOT-T5700-BL-1	Activity:	A9930 <Rev & App> Traffic Controller
	Project:	FDOT-T5700-BL-1	Activity:	A9940 <Rev & App> ITS Cabinet
Detector	Project:	FDOT-T5700-BL-1	Activity:	A9950 <Rev & App> CCTV Camera
	Project:	FDOT-T5700-BL-1	Activity:	A9960 <Rev & App> Ethernet Switch
	Project:	FDOT-T5700-BL-1	Activity:	A9970 <Rev & App> Media Converter
Detection System	Project:	FDOT-T5700-BL-1	Activity:	A9980 <Rev & App> UPS
	Project:	FDOT-T5700-BL-1	Activity:	A9990 <Rev & App> Signs
	Project:	FDOT-T5700-BL-1	Activity:	