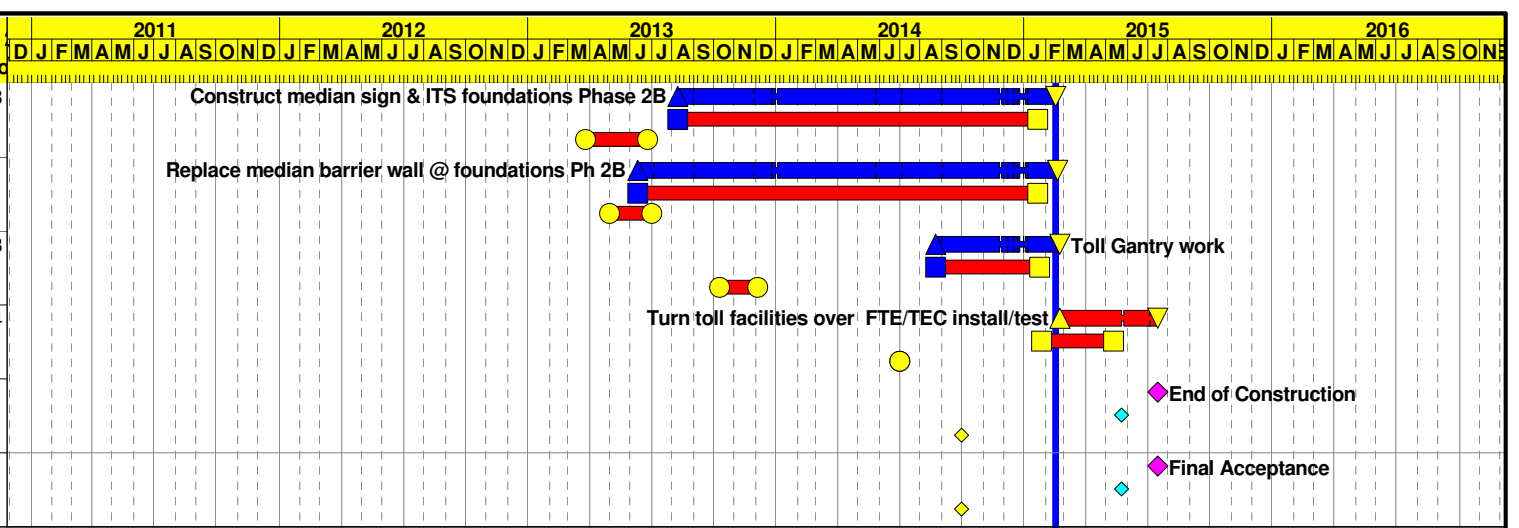
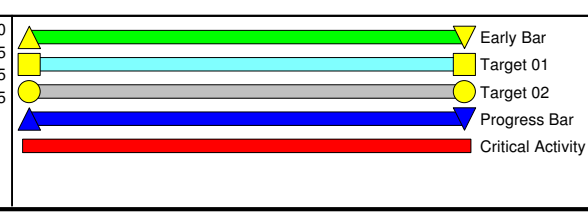


95RP	Activity ID	Activity Description	Orig Dur	Rem Dur	Actual Duration	%	Early Start	Early Finish	Target 1 Early Start	Target 1 Early Finish	Target 2 Early Start	Target 2 Early Finish	Total Float	target Float	target Flt
ITS	2BC360	Construct median sign & ITS foundations Phase 2B	65	1	397	98	09AUG13A	16FEB15	09AUG13A	19JAN15	26MAR13	25JUN13	-74	-25	3
	2BC400	Replace median barrier wall @ foundations Ph 2B	45	2	440	96	10JUN13A	17FEB15	10JUN13A	20JAN15	30APR13	02JUL13	-74	-25	61
TOLL	C1010	Toll Gantry work	40	4	133	90	25AUG14A	21FEB15	25AUG14A	24JAN15	09OCT13	05DEC13	-74	-25	3
FTE	C1140	Turn toll facilities over FTE/TEC install/test	120	120	0	0	23FEB15	16JUL15	26JAN15	12MAY15	03JUL14	02JUL14	-74	-25	4
HCC	END	End of Construction	0	0	0	0		16JUL15		22MAY15		01OCT14	-91	-39	1
	FINALACC	Final Acceptance	0	0	0	0		16JUL15		22MAY15		01OCT14	-91	-39	1

The duration of task C1140 was revised to (92) working days on December 2014 submission. The same has been restored to (120) working days on February 2015 submission, and that impacted the longest path by additional (28) working days.



Start Date: 28NOV10
 Finish Date: 16JUL15
 Data Date: 15FEB15
 Must Finish Date: 16APR15



3902
 Hubbard Construction
 I-95 Express Lanes February Update
 Longest Path (February 2015)

Sheet 1 of 1
 Target 01 = Previous Submission
 Target 02 = Baseline Schedule

Date	Revision	Checked	Approved