



Activity ID	Activity Name	Start	Finish	Original Duration	Physical % Complete	Total Float	2017											
							Qtr 1			Qtr 2			Qtr 3			Qtr 4		
							Feb	Mar	Apr	May	Jun	Jul	Aug	Sep	Oct	Nov		
GLDD Articulated Tug / Barge Schedule Development - Final Ve							Aug-10-2017, GLDD Articulated Tug / Barge Schedu											
Major Milestones							Aug-10-2017, Major Milestones											
M8090	Milestone: Completion of Launching & Transfer for Tug		Feb-06-2017	0	0%	-24	◆ Milestone: Completion of Launching & Transfer for Tug											
M8040	Milestone: Completion of Alignment of Main Engine & Shafting for Tug		Feb-22-2017	0	0%	10	◆ Milestone: Completion of Alignment of Main Engine & Shafting for Tug											
M8030	Milestone: Completion of All Hydros & Flushing for Barge		Mar-10-2017	0	0%	21	◆ Milestone: Completion of All Hydros & Flushing for Barge											
M8100	Milestone: Completion of Deck Equipment Install for Barge		Mar-15-2017	0	0%	41	◆ Milestone: Completion of Deck Equipment Install for Barge											
M6340	Milestone: Cable / Wiring Termination Completion for Barge		Mar-28-2017	0	0%	31	◆ Milestone: Cable / Wiring Termination Completion for Barge											
M8070	Milestone: Completion of Cable / Wiring Terminations for Tug		Apr-11-2017	0	0%	10	◆ Milestone: Completion of Cable / Wiring Terminations for Tug											
M3030	Milestone: Completion of Automation Testing for Barge		Apr-12-2017	0	0%	20	◆ Milestone: Completion of Automation Testing for Barge											
M8060	Milestone: Completion of Alignment of Engines & Motors for Barge		Apr-14-2017	0	0%	-4	◆ Milestone: Completion of Alignment of Engines & Motors for Barge											
M8050	Milestone: Completion of All Hydros & Flushing for Tug		Apr-24-2017	0	0%	-3	◆ Milestone: Completion of All Hydros & Flushing for Tug											
M2050	Milestone: Completion of Automation Testing for Tug		Apr-27-2017	0	0%	-2	◆ Milestone: Completion of Automation Testing for Tug											
M3010	Milestone: Completion of Power to Switchboards for Barge		May-02-2017	0	0%	-16	◆ Milestone: Completion of Power to Switchboards for Barge											
M8020	Milestone: Completion of Engine Light Offs for Barge		May-02-2017	0	0%	5	◆ Milestone: Completion of Engine Light Offs for Barge											
M8010	Milestone: Completion of Engine Light Offs for Tug		May-16-2017	0	0%	-15	◆ Milestone: Completion of Engine Light Offs for Tug											
M2040	Milestone: Completion of Power to Switchboards for Tug		Jun-13-2017	0	0%	-35	◆ Milestone: Completion of Power to Switchboards for Tug											
M7020	Milestone: Begin Dock Trials of Articulated Tug / Barge	Jun-22-2017		0	0%	-31	◆ Milestone: Begin Dock Trials of Articulated Tug / Barge											
M7010	Milestone: Begin Sea Trials of Articulated Tug / Barge	Jul-18-2017		0	0%	-47	◆ Milestone: Begin Sea Trials of Articulated Tug / Barge											
M8000	Milestone: Final Delivery of Articulated Tug / Barge		Aug-10-2017*	0	0%	-49	◆ Milestone: Final Delivery of Articulated Tug / Barge											
Tug - Hull # 252							Jun-20-2017, Tug - Hull # 252											
Machinery Support Piping Systems - Tug							Apr-27-2017, Machinery Support Piping Systems - Tug											
T6350	Diesel Exhaust Install - Tug	Sep-19-2016 A	Feb-21-2017	93	90%	-6	Diesel Exhaust Install - Tug											
T1980	Stores Crane Hydraulic Piping Install - Tug	Sep-19-2016 A	Feb-23-2017	104	85%	20	Stores Crane Hydraulic Piping Install - Tug											
T2000	Plumbing Drainage Install - Tug	Sep-19-2016 A	Apr-18-2017	104	50%	-16	Plumbing Drainage Install - Tug											
T2010	Water Mist Piping Install - Tug	Sep-19-2016 A	Mar-13-2017	104	75%	13	Water Mist Piping Install - Tug											
T2020	Chill Water Piping Install - Tug	Sep-19-2016 A	Apr-18-2017	104	50%	-13	Chill Water Piping Install - Tug											
T2210	Fire Main System Pressure Test - Tug	Sep-19-2016 A	Feb-07-2017	2	25%	40	Fire Main System Pressure Test - Tug											
T2130	Service Air System Pressure Test - Tug	Nov-10-2016 A	Feb-07-2017	2	25%	40	Service Air System Pressure Test - Tug											
T2040	Main Engine Salt Water Cooling Pressure Test - Tug	Feb-06-2017	Feb-07-2017	2	0%	0	Main Engine Salt Water Cooling Pressure Test - Tug											
T2050	Auxiliary Salt Water Cooling Pressure Test - Tug	Feb-06-2017	Feb-07-2017	2	0%	3	Auxiliary Salt Water Cooling Pressure Test - Tug											
T2060	Fresh Water Cooling Pressure Test - Tug	Feb-06-2017	Feb-07-2017	2	0%	6	Fresh Water Cooling Pressure Test - Tug											
T2110	Fuel Oil Service System Pressure Test - Tug	Feb-06-2017	Feb-07-2017	2	0%	3	Fuel Oil Service System Pressure Test - Tug											
T2120	Starting Air System Pressure Test - Tug	Feb-06-2017	Feb-07-2017	2	0%	6	Starting Air System Pressure Test - Tug											
T2140	Bilge System Pressure Test - Tug	Feb-06-2017	Feb-07-2017	2	0%	39	Bilge System Pressure Test - Tug											
T2160	Steering Hydraulic Piping Pressure Test - Tug	Feb-06-2017	Feb-07-2017	2	0%	36	Steering Hydraulic Piping Pressure Test - Tug											
T2170	Hydraulic Transfer System Pressure Test - Tug	Feb-06-2017	Feb-07-2017	2	0%	36	Hydraulic Transfer System Pressure Test - Tug											
T2180	Articouple Hydraulic Piping Pressure Test - Tug	Feb-06-2017	Feb-07-2017	2	0%	34	Articouple Hydraulic Piping Pressure Test - Tug											
T2200	Vents & Sounds Pressure Test - Tug	Feb-06-2017	Feb-07-2017	2	0%	39	Vents & Sounds Pressure Test - Tug											
T2220	Deck Drains Pressure Test - Tug	Feb-06-2017	Feb-07-2017	2	0%	39	Deck Drains Pressure Test - Tug											





Activity ID	Activity Name	Start	Finish	Original Duration	Physical % Complete	Total Float	2017															
							Qtr 1			Qtr 2			Qtr 3			Qtr 4						
							Feb	Mar	Apr	May	Jun	Jul	Aug	Sep	Oct	Nov						
T2240	Ballast Piping Pressure Test - Tug	Feb-06-2017	Feb-07-2017	2	0%	39	█															
T2430	Potable Water System Clean & Flush - Tug	Feb-06-2017	Feb-07-2017	2	0%	35	█															
T2630	CPP Hydraulic Piping Walk Down & Rectification - Tug	Feb-06-2017	Feb-08-2017	3	0%	43	█															
T2680	Shaft Seal Hydraulic Piping Walk Down & Rectification - Tug	Feb-06-2017	Feb-08-2017	3	0%	41	█															
T2370	Service Air System Clean & Flush - Tug	Feb-07-2017	Feb-09-2017	2	0%	40	█															
T2460	Fire Main System Clean & Flush - Tug	Feb-07-2017	Feb-09-2017	2	0%	40	█															
T2280	Main Engine Salt Water Cooling Clean & Flush - Tug	Feb-08-2017	Feb-09-2017	2	0%	0	█															
T2290	Auxiliary Salt Water Cooling Clean & Flush - Tug	Feb-08-2017	Feb-09-2017	2	0%	3	█															
T2300	Fresh Water Cooling Clean & Flush - Tug	Feb-08-2017	Feb-09-2017	2	0%	6	█															
T2350	Fuel Oil Service System Clean & Flush - Tug	Feb-08-2017	Feb-14-2017	5	0%	3	█															
T2360	Statring Air System Clean & Flush - Tug	Feb-08-2017	Feb-09-2017	2	0%	6	█															
T2380	Bilge System Clean & Flush - Tug	Feb-08-2017	Feb-09-2017	2	0%	39	█															
T2400	Steering Hydraulic Piping Clean & Flush - Tug	Feb-08-2017	Feb-14-2017	5	0%	36	█															
T2410	Hydraulic Transfer System Clean & Flush - Tug	Feb-08-2017	Feb-14-2017	5	0%	36	█															
T2420	Articouple hydraulic piping Clean & Flush - Tug	Feb-08-2017	Feb-14-2017	5	0%	34	█															
T2450	Vents & Sounds Clean & Flush - Tug	Feb-08-2017	Feb-09-2017	2	0%	39	█															
T2470	Deck Drains Clean & Flush - Tug	Feb-08-2017	Feb-09-2017	2	0%	39	█															
T2490	Ballast Piping Clean & Flush - Tug	Feb-08-2017	Feb-09-2017	2	0%	39	█															
T2690	Potable Water System Walk Down & Rectification - Tug	Feb-08-2017	Feb-10-2017	3	0%	35	█															
T2610	Service Air System Walk Down & Rectification - Tug	Feb-09-2017	Feb-14-2017	3	0%	40	█															
T2720	Fire Main System Walk Down & Rectification - Tug	Feb-09-2017	Feb-14-2017	3	0%	40	█															
T2520	Main Engine Salt Water Cooling Walk Down & Rectification - Tug	Feb-10-2017	Feb-14-2017	3	0%	0	█															
T2530	Auxiliary Salt Water Cooling Walk Down & Rectification - Tug	Feb-10-2017	Feb-14-2017	3	0%	3	█															
T2540	Fresh Water Cooling Walk Down & Rectification - Tug	Feb-10-2017	Feb-14-2017	3	0%	6	█															
T2600	Statring Air System Walk Down & Rectification - Tug	Feb-10-2017	Feb-14-2017	3	0%	6	█															
T2620	Bilge System Walk Down & Rectification - Tug	Feb-10-2017	Feb-14-2017	3	0%	39	█															
T2710	Vents & Sounds Walk Down & Rectification - Tug	Feb-10-2017	Feb-14-2017	3	0%	39	█															
T2730	Deck Drains Walk Down & Rectification - Tug	Feb-10-2017	Feb-14-2017	3	0%	39	█															
T2750	Ballast Piping Walk Down & Rectification - Tug	Feb-10-2017	Feb-14-2017	3	0%	39	█															
T2590	Fuel Oil Service System Walk Down & Rectification - Tug	Feb-15-2017	Feb-17-2017	3	0%	3	█															
T2650	Steering Hydraulic Piping Walk Down & Rectification - Tug	Feb-15-2017	Feb-17-2017	3	0%	36	█															
T2660	Hydraulic Transfer System Walk Down & Rectification - Tug	Feb-15-2017	Feb-17-2017	3	0%	36	█															
T2670	Articouple hydraulic piping Walk Down & Rectification - Tug	Feb-15-2017	Feb-17-2017	3	0%	34	█															
T2080	Lube Oil Pressure Test - Tug	Feb-16-2017	Feb-17-2017	2	0%	-5	█															
T2100	Fuel Oil Transfer System Pressure Test - Tug	Feb-16-2017	Feb-17-2017	2	0%	-8	█															
T2320	Lube Oil Clean & Flush - Tug	Feb-20-2017	Feb-24-2017	5	0%	-5	█															
T2340	Fuel Oil Transfer System Clean & Flush	Feb-20-2017	Feb-24-2017	5	0%	-8	█															
T2190	Exhaust Piping Systems Pressure Test - Tug	Feb-20-2017	Feb-22-2017	2	0%	18	█															
T2070	Diesel Exhaust Pressure Test - Tug	Feb-22-2017	Feb-23-2017	2	0%	-6	█															

█ Remaining Level of Effort █ Critical Remaining Work
█ Actual Level of Effort ◆ Milestone
█ Actual Work █ Summary
█ Remaining Work





Activity ID	Activity Name	Start	Finish	Original Duration	Physical % Complete	Total Float	2017															
							Qtr 1			Qtr 2			Qtr 3			Qtr 4						
							Feb	Mar	Apr	May	Jun	Jul	Aug	Sep	Oct	Nov						
T2440	Exhaust Piping System Clean & Flush - Tug	Feb-22-2017	Feb-24-2017	2	0%	18																
T2150	Stores Crane Hydraulic Piping Pressure Test - Tug	Feb-24-2017	Feb-27-2017	2	0%	20																
T2310	Diesel Exhaust Clean & Flush	Feb-24-2017	Feb-27-2017	2	0%	-6																
T2700	Exhaust Piping Systems Walk Down & Rectification - Tug	Feb-24-2017	Mar-01-2017	3	0%	18																
T2560	Lube Oil Walk Down & Rectification - Tug	Feb-27-2017	Mar-01-2017	3	0%	-5																
T2580	Fuel Oil Transfer System Walk Down & Rectification - Tug	Feb-27-2017	Mar-01-2017	3	0%	-8																
T2390	Stores Crane Hydraulic piping Clean & Flush	Feb-28-2017	Mar-06-2017	5	0%	20																
T2550	Diesel Exhaust Walk Down & Rectification - Tug	Feb-28-2017	Mar-02-2017	3	0%	-6																
T2640	Stores Crane Hydraulic Piping Walk Down & Rectification - Tug	Mar-07-2017	Mar-09-2017	3	0%	20																
T2090	Dirty Oil Pressure Test - Tug	Mar-14-2017	Mar-15-2017	2	0%	13																
T2250	Water Mist Piping Pressure Test - Tug	Mar-14-2017	Mar-15-2017	2	0%	13																
T2330	Dirty Oil Clean & Flush	Mar-16-2017	Mar-17-2017	2	0%	13																
T2500	Water Mist Piping Clean & Flush - Tug	Mar-16-2017	Mar-17-2017	2	0%	13																
T2570	Dirty Oil Walk Down & Rectification - Tug	Mar-20-2017	Mar-22-2017	3	0%	13																
T2760	Water Mist Piping Walk Down & Rectification - Tug	Mar-20-2017	Mar-22-2017	3	0%	13																
T2030	Milestone: Piping System Install Completion - Tug		Apr-18-2017	0	0%	-3																
T2230	Plumbing Drainage Pressure Test - Tug	Apr-19-2017	Apr-20-2017	2	0%	-16																
T2260	Chill Water Piping Pressure Test - Tug	Apr-19-2017	Apr-20-2017	2	0%	-13																
T2270	Milestone: Piping System Pressure Test Completion - Tug		Apr-20-2017	0	0%	-5																
T2480	Plumbing Drainage Clean & Flush - Tug	Apr-21-2017	Apr-24-2017	2	0%	-16																
T2510	Chill Water Piping Clean & Flush - Tug	Apr-21-2017	Apr-24-2017	2	0%	-13																
T2740	Plumbing Drainage Walk Down & Rectification - Tug	Apr-25-2017	Apr-27-2017	3	0%	-16																
T2770	Chill water Piping Walk Down & Rectification - Tug	Apr-25-2017	Apr-27-2017	3	0%	-13																
T2780	Milestone: Piping System Walk Down & Rectification Completion - Tug		Apr-27-2017	0	0%	-10																
Cable Pulls - Tug		Sep-19-2016 A	Mar-14-2017	125		13	Mar-14-2017, Cable Pulls - Tug															
T1310	6600V Switchboard Cable Pull - Tug	Sep-19-2016 A	Mar-14-2017	45	10%	-26																
T1320	Transformer T1 Cable Pull - Tug	Sep-19-2016 A	Feb-08-2017	5	50%	28																
T1340	Disribution Panel L4 Cable Pull - Tug	Sep-19-2016 A	Jan-18-2017 A	10	100%		Distribution Panel L4 Cable Pull - Tug															
T6030	Shaft Generators Cable Pull - Tug	Oct-09-2016 A	Feb-22-2017	10	25%	5																
T6090	Auxiliary Generator Cable Pull - Tug	Oct-09-2016 A	Feb-08-2017	5	50%	19																
T6190	Emergency Generator Cable Pull - Tug	Oct-09-2016 A	Feb-08-2017	10	50%	23																
T6200	Emergency Generator Engine Cable Pull - Tug	Oct-09-2016 A	Feb-08-2017	5	50%	25																
T6270	24V Emergency Generator Starting Cable Pull - Tug	Jan-11-2017 A	Feb-15-2017	3	50%	24																
T1330	6600V Barge / Tug Connector Cable Pull	Feb-27-2017	Mar-10-2017	10	0%	-6																
Power Distribution & Lighting - Tug		Sep-19-2016 A	Apr-25-2017	157		-8	Apr-25-2017, Power Distribution & Lighting - Tug															
T1280	6600V Barge Connector Install - Tug	Sep-19-2016 A	Feb-24-2017	20	25%	-6																
T1300	480V Barge / Tug Receptacle Install - Tug	Sep-19-2016 A	Feb-10-2017	10	50%	42																
T3240	Floodlights Install - Tug	Sep-19-2016 A	Feb-15-2017	10	75%	39																
T3260	Lighting Install - Tug	Sep-19-2016 A	Mar-08-2017	45	75%	24																

Remaining Level of Effort
 Critical Remaining Work
 Actual Level of Effort
 Milestone
 Actual Work
 Summary
 Remaining Work





Activity ID	Activity Name	Start	Finish	Original Duration	Physical % Complete	Total Float	2017											
							Qtr 1			Qtr 2			Qtr 3			Qtr 4		
							Feb	Mar	Apr	May	Jun	Jul	Aug	Sep	Oct	Nov		
T3270	Emergency Lighting Install - Tug	Sep-19-2016 A	Feb-22-2017	25	75%	34	Emergency Lighting Install - Tug											
T4150	Shore Power Connection Box Vendor Check List - Tug	Feb-06-2017	Feb-07-2017	2	0%	-24	Shore Power Connection Box Vendor Check List - Tug											
T3840	Emergency Lighting Operational Test - Tug	Feb-22-2017	Feb-27-2017	3	0%	34	Emergency Lighting Operational Test - Tug											
T3820	Lighting Operational Test - Tug	Mar-09-2017	Mar-10-2017	2	0%	24	Lighting Operational Test - Tug											
T5900	480V Main Distribution Switchboard Start & Test Minimum Basic Components - Tug	Mar-16-2017	Mar-17-2017	2	0%	-49	480V Main Distribution Switchboard Start & Test Minimum Basic Components - Tug											
T5910	480V Main Distribution Switchboard Minimum Power Test - Tug	Mar-20-2017	Mar-20-2017	1	0%	-49	480V Main Distribution Switchboard Minimum Power Test - Tug											
T5920	Emergency Switchboard Start & Test Minimum Basic Components - Tug	Mar-21-2017	Mar-21-2017	1	0%	-49	Emergency Switchboard Start & Test Minimum Basic Components - Tug											
T5930	Emergency Switchboard Minimum Power Test - Tug	Mar-22-2017	Mar-22-2017	1	0%	-49	Emergency Switchboard Minimum Power Test - Tug											
T5840	24V & 48V MVSBS UPS Test - Tug	Mar-29-2017	Mar-30-2017	2	0%	-49	24V & 48V MVSBS UPS Test - Tug											
T5990	24V ESB UPS Test - Tug	Mar-29-2017	Mar-30-2017	2	0%	-38	24V ESB UPS Test - Tug											
T5940	480V Main Distribution Switchboard Start & Test Basic Components - Tug	Mar-31-2017	Apr-03-2017	2	0%	-49	480V Main Distribution Switchboard Start & Test Basic Components - Tug											
T5970	Emergency Switchboard Start & Test Basic Components - Tug	Mar-31-2017	Mar-31-2017	1	0%	-38	Emergency Switchboard Start & Test Basic Components - Tug											
T5960	Emergency Switchboard Power Test - Tug	Apr-03-2017	Apr-04-2017	2	0%	-38	Emergency Switchboard Power Test - Tug											
T5950	480V Main Distribution Switchboard Power Test - Tug	Apr-04-2017	Apr-07-2017	4	0%	-49	480V Main Distribution Switchboard Power Test - Tug											
T6000	480V Power Available from Emergency Switchboard - Tug	Apr-05-2017	Apr-05-2017	1	0%	-38	480V Power Available from Emergency Switchboard - Tug											
T1050	480V Power Available from Main Switchboard - Tug	Apr-10-2017	Apr-10-2017	1	0%	-49	480V Power Available from Main Switchboard - Tug											
T5880	Distribution Panel EP1 Test - Tug	Apr-11-2017	Apr-12-2017	2	0%	-15	Distribution Panel EP1 Test - Tug											
T5750	24V Distribution Panel Engine Room 1 & Battery Test - Tug	Apr-21-2017	Apr-25-2017	3	0%	-34	24V Distribution Panel Engine Room 1 & Battery Test - Tug											
T5760	24V Distribution Panel Engine Room 2 & Battery Test - Tug	Apr-21-2017	Apr-25-2017	3	0%	-34	24V Distribution Panel Engine Room 2 & Battery Test - Tug											
T5770	24V Distribution Panel Pilot House & Battery Test - Tug	Apr-21-2017	Apr-25-2017	3	0%	-11	24V Distribution Panel Pilot House & Battery Test - Tug											
T5790	12V Distribution Panel Pilot House & Battery Test - Tug	Apr-21-2017	Apr-25-2017	3	0%	-11	12V Distribution Panel Pilot House & Battery Test - Tug											
System Hookups - Tug		Sep-19-2016 A	Apr-11-2017	145		5	Apr-11-2017, System Hookups - Tug											
T1290	Shore Power Receptacle Install - Tug	Sep-19-2016 A	Jan-10-2017 A	10	100%		Power Receptacle Install - Tug											
T1950	Lube Oil Install - Tug	Sep-19-2016 A	Feb-15-2017	90	80%	-5	Lube Oil Install - Tug											
T1960	Dirty Oil Piping Install - Tug	Sep-19-2016 A	Mar-13-2017	104	75%	13	Dirty Oil Piping Install - Tug											
T1970	Fuel Oil Transfer System Install - Tug	Sep-19-2016 A	Feb-15-2017	87	80%	-8	Fuel Oil Transfer System Install - Tug											
T1990	Exhaust Piping System Install - Tug	Sep-19-2016 A	Feb-20-2017	104	90%	18	Exhaust Piping System Install - Tug											
T3070	Hoists & Monorails In Machinery Space Install - Tug	Sep-19-2016 A	Feb-10-2017	20	75%	41	Hoists & Monorails In Machinery Space Install - Tug											
T3090	Doors & Hatches Install - Tug	Sep-19-2016 A	Feb-21-2017	45	75%	33	Doors & Hatches Install - Tug											
T3170	Galley & Mess Equipment Install - Tug	Sep-19-2016 A	Mar-27-2017	45	20%	11	Galley & Mess Equipment Install - Tug											
T3180	Lifesaving Equipment Install - Tug	Sep-19-2016 A	Feb-21-2017	15	25%	36	Lifesaving Equipment Install - Tug											
T3250	Emergency Shutdown Install - Tug	Sep-19-2016 A	Feb-10-2017	5	10%	43	Emergency Shutdown Install - Tug											
T3280	Fire Detection & Alarm Install - Tug	Sep-19-2016 A	Feb-22-2017	25	50%	35	Fire Detection & Alarm Install - Tug											
T3290	Navigation & Communication Install - Tug	Sep-19-2016 A	Feb-24-2017	30	50%	31	Navigation & Communication Install - Tug											
T6080	Auxiliary Generator Engine Install - Tug	Sep-19-2016 A	Jan-19-2017 A	20	100%		Auxiliary Generator Engine Install - Tug											
T6180	Emergency Generator Engine Install - Tug	Sep-19-2016 A	Jan-19-2017 A	20	100%		Emergency Generator Engine Install - Tug											
T4210	Main Engine Barring Equipment Install - Tug	Sep-19-2016 A	Feb-20-2017	21	50%	4	Main Engine Barring Equipment Install - Tug											
T5870	Distribution Panel EP1 Termination - Tug	Sep-22-2016 A	Feb-07-2017	5	75%	30	Distribution Panel EP1 Termination - Tug											
T1360	Transformer T1 Termination - Tug	Sep-24-2016 A	Feb-10-2017	5	50%	27	Transformer T1 Termination - Tug											





Activity ID	Activity Name	Start	Finish	Original Duration	Physical % Complete	Total Float	2017											
							Qtr 1			Qtr 2			Qtr 3			Qtr 4		
							Feb	Mar	Apr	May	Jun	Jul	Aug	Sep	Oct	Nov		
T1520	Transformer T2 Termination - Tug	Sep-24-2016 A	Feb-07-2017	5	75%	-5	Transformer T2 Termination - Tug											
T1530	Transformer T3 Termination - Tug	Sep-24-2016 A	Feb-07-2017	5	75%	-5	Transformer T3 Termination - Tug											
T1640	Articouple Group Motor Starter Termination - Tug	Sep-24-2016 A	Feb-07-2017	5	75%	40	Articouple Group Motor Starter Termination - Tug											
T5830	24V & 48V MVSB UPS Termination - Tug	Sep-24-2016 A	Feb-06-2017	2	75%	-13	24V & 48V MVSB UPS Termination - Tug											
T5850	480V Static Converter Termination - Tug	Sep-24-2016 A	Feb-08-2017	10	75%	28	480V Static Converter Termination - Tug											
T1200	Vosta DCMS Cable Termination - Tug	Sep-29-2016 A	Feb-28-2017	30	90%	34	Vosta DCMS Cable Termination - Tug											
T1230	Beier Bow Thruster Control Termination - Tug	Sep-29-2016 A	Feb-07-2017	5	75%	45	Beier Bow Thruster Control Termination - Tug											
T1430	Distribution Panel L7 & Transformer Termination - Tug	Sep-29-2016 A	Feb-08-2017	10	75%	30	Distribution Panel L7 & Transformer Termination - Tug											
T1440	Distribution Panel P1 Termination - Tug	Sep-29-2016 A	Feb-08-2017	10	75%	5	Distribution Panel P1 Termination - Tug											
T1450	Distribution Panel P2 Termination - Tug	Sep-29-2016 A	Feb-08-2017	10	75%	-3	Distribution Panel P2 Termination - Tug											
T1460	Distribution Panel P3 Termination - Tug	Sep-29-2016 A	Feb-08-2017	10	75%	30	Distribution Panel P3 Termination - Tug											
T1480	Distribution Panel P4 Termination - Tug	Sep-29-2016 A	Feb-08-2017	10	75%	42	Distribution Panel P4 Termination - Tug											
T1490	Distribution Panel P5 Termination - Tug	Sep-29-2016 A	Feb-08-2017	10	75%	11	Distribution Panel P5 Termination - Tug											
T1500	Distribution Panel P240 & Transformer Termination - Tug	Sep-29-2016 A	Feb-08-2017	10	75%	4	Distribution Panel P240 & Transformer Termination - Tug											
T1510	Distribution Panel L8 & Transformer Termination - Tug	Sep-29-2016 A	Feb-08-2017	10	75%	31	Distribution Panel L8 & Transformer Termination - Tug											
T1550	Distribution Panel L1/L1A Termination - Tug	Sep-29-2016 A	Feb-20-2017	10	75%	-6	Distribution Panel L1/L1A Termination - Tug											
T1560	Distribution Panel L2 Termination - Tug	Sep-29-2016 A	Feb-08-2017	10	75%	34	Distribution Panel L2 Termination - Tug											
T1570	Distribution Panel L3 Termination - Tug	Sep-29-2016 A	Feb-08-2017	10	75%	43	Distribution Panel L3 Termination - Tug											
T1580	Distribution Panel L4 Termination - Tug	Sep-29-2016 A	Feb-08-2017	10	75%	40	Distribution Panel L4 Termination - Tug											
T1590	Distribution Panel L5 Termination - Tug	Sep-29-2016 A	Feb-08-2017	10	75%	40	Distribution Panel L5 Termination - Tug											
T1600	Distribution Panel L6 Termination - Tug	Sep-29-2016 A	Feb-08-2017	10	75%	43	Distribution Panel L6 Termination - Tug											
T1620	Emergency System Panel EL1/EL1A Termination - Tug	Sep-29-2016 A	Feb-08-2017	10	75%	-17	Emergency System Panel EL1/EL1A Termination - Tug											
T5670	Beier DP System Cable Termination - Tug	Oct-04-2016 A	Feb-07-2017	5	75%	49	Beier DP System Cable Termination - Tug											
T1220	Beier PMS Cable Termination - Tug	Oct-09-2016 A	Feb-08-2017	10	75%	21	Beier PMS Cable Termination - Tug											
T1410	Emergency Switchboard Termination - Tug	Oct-09-2016 A	Feb-10-2017	20	75%	-26	Emergency Switchboard Termination - Tug											
T6220	Emergency Generator Engine Cable Termination - Tug	Oct-14-2016 A	Feb-13-2017	5	50%	25	Emergency Generator Engine Cable Termination - Tug											
T1380	480V Main Distribution Switchboard Termination - Tug	Oct-17-2016 A	Mar-10-2017	25	75%	-49	480V Main Distribution Switchboard Termination - Tug											
T1420	MCC1 Termination - Tug	Oct-19-2016 A	Feb-10-2017	20	75%	-8	MCC1 Termination - Tug											
T1470	MCC2 Termination - Tug	Oct-19-2016 A	Feb-10-2017	20	75%	-6	MCC2 Termination - Tug											
T1630	Emergency MCC Termination - Tug	Oct-19-2016 A	Feb-10-2017	20	75%	0	Emergency MCC Termination - Tug											
T6210	Emergency Generator Cable Termination - Tug	Oct-19-2016 A	Feb-15-2017	10	50%	23	Emergency Generator Cable Termination - Tug											
T1350	6600V Switchboard Termination - Tug	Nov-03-2016 A	Apr-11-2017	25	1%	-26	6600V Switchboard Termination - Tug											
T1540	208V /120V Main Distribution Switch Board Termination - Tug	Nov-03-2016 A	Feb-10-2017	20	75%	-5	208V /120V Main Distribution Switch Board Termination - Tug											
T1210	Beier MAMS Cable Termination - Tug	Dec-03-2016 A	Feb-15-2017	30	75%	12	Beier MAMS Cable Termination - Tug											
T6310	Fire Detection & Alarm Cable Termination - Tug	Jan-11-2017 A	Feb-10-2017	5	75%	28	Fire Detection & Alarm Cable Termination - Tug											
T1610	Transformer ET1 Termination - Tug	Jan-11-2017 A	Feb-07-2017	5	75%	-17	Transformer ET1 Termination - Tug											
T5720	24V Distribution Panel Engine Room 1 & Battery Termination - Tug	Jan-11-2017 A	Feb-07-2017	5	75%	19	24V Distribution Panel Engine Room 1 & Battery Termination - Tug											
T5730	24V Distribution Panel Engine Room 2 & Battery Termination - Tug	Jan-11-2017 A	Feb-07-2017	5	75%	19	24V Distribution Panel Engine Room 2 & Battery Termination - Tug											
T5740	24V Distribution Panel Pilot House & Battery Termination - Tug	Jan-11-2017 A	Feb-07-2017	5	75%	42	24V Distribution Panel Pilot House & Battery Termination - Tug											

Remaining Level of Effort Critical Remaining Work
 Actual Level of Effort Milestone
 Actual Work Summary
 Remaining Work





Activity ID	Activity Name	Start	Finish	Original Duration	Physical % Complete	Total Float	2017											
							Qtr 1			Qtr 2			Qtr 3			Qtr 4		
							Feb	Mar	Apr	May	Jun	Jul	Aug	Sep	Oct	Nov		
T5780	12V Distribution Panel Pilot House & Battery Termination - Tug	Jan-11-2017 A	Feb-07-2017	5	75%	42	█ 12V Distribution Panel Pilot House & Battery Termination - Tug											
T5980	24V ESB UPS Termination - Tug	Jan-11-2017 A	Feb-06-2017	3	75%	-2	█ 24V ESB UPS Termination - Tug											
T6280	24V Emergency Generator Starting Cable Termination - Tug	Jan-12-2017 A	Feb-20-2017	2	50%	24	█ 24V Emergency Generator Starting Cable Termination - Tug											
T6040	Shaft Generators Cable Termination - Tug	Jan-18-2017 A	Mar-01-2017	10	10%	5	█ Shaft Generators Cable Termination - Tug											
T1390	Shore Power Receptacle Termination - Tug	Feb-06-2017	Feb-10-2017	5	0%	-27	█ Shore Power Receptacle Termination - Tug											
T6110	Auxiliary Generator Engine Cable Termination - Tug	Feb-06-2017	Feb-10-2017	5	0%	26	█ Auxiliary Generator Engine Cable Termination - Tug											
T3080	Quick Closing Valve System Install - Tug	Feb-06-2017	Feb-17-2017	10	0%	36	█ Quick Closing Valve System Install - Tug											
T3110	Fire Dampers Install - Tug	Feb-06-2017	Feb-24-2017	15	0%	29	█ Fire Dampers Install - Tug											
T6100	Auxiliary Generator Cable Termination - Tug	Feb-09-2017	Feb-22-2017	10	0%	19	█ Auxiliary Generator Cable Termination - Tug											
T1400	480 V Barge / Tug Connection Receptacle Termination - Tug	Feb-13-2017	Feb-17-2017	5	0%	42	█ 480 V Barge / Tug Connection Receptacle Termination - Tug											
T1370	6600V Barge / Tug Connector Termination - Tug	Mar-13-2017	Apr-07-2017	20	0%	-6	█ 6600V Barge / Tug Connector Termination - Tug											
Launching, Transfer, & Float Off - Tug		Jan-27-2017 A	Feb-06-2017	16		-24	▶ Feb-06-2017, Launching, Transfer, & Float Off - Tug											
T1000	Launch / Tow - Tug	Jan-27-2017 A	Feb-06-2017	15	75%	-24	█ Launch / Tow - Tug											
T5630	Dry Dock Commitment Date - Tug	Feb-03-2017 A		0	100%		◆ Dry Dock Commitment Date - Tug											
Align Main Engines & Shafting - Tug		Feb-07-2017	Feb-22-2017	12		3	▶ Feb-22-2017, Align Main Engines & Shafting - Tug											
T1010	Align & Complete Interconnect - Tug	Feb-07-2017	Feb-22-2017	12	0%	3	█ Align & Complete Interconnect - Tug											
Hydro Test Tanks - Tug		Feb-23-2017	Mar-09-2017	11		25	▶ Mar-09-2017, Hydro Test Tanks - Tug											
T1020	Hydro Tanks - Tug	Feb-23-2017	Mar-09-2017	11	0%	25	█ Hydro Tanks - Tug											
System Startups - Tug		Sep-15-2016 A	Jun-20-2017	197		-40	▶ Jun-20-2017, System Startups - Tug											
T3310	General Alarm System Install - Tug	Sep-15-2016 A	Mar-15-2017	15	50%	19	█ General Alarm System Install - Tug											
T3120	Stores Crane Install - Tug	Sep-19-2016 A	Feb-17-2017	10	50%	36	█ Stores Crane Install - Tug											
T4720	Delivery of Articulated Boarding Ladder - Tug	Feb-03-2017 A	Mar-01-2017	5	0%	24	█ Delivery of Articulated Boarding Ladder - Tug											
T3060	Pad Eyes In Machinery Space Install - Tug	Feb-06-2017	Feb-24-2017	15	0%	31	█ Pad Eyes In Machinery Space Install - Tug											
T3100	Emergency Towing System Install - Tug	Feb-06-2017	Feb-17-2017	10	0%	37	█ Emergency Towing System Install - Tug											
T3130	Exterior Pad Eyes Install - Tug	Feb-06-2017	Feb-24-2017	15	0%	31	█ Exterior Pad Eyes Install - Tug											
T3140	Emergency Hawser Install - Tug	Feb-06-2017	Feb-07-2017	2	0%	45	█ Emergency Hawser Install - Tug											
T3150	Towing Bridle Install - Tug	Feb-06-2017	Feb-07-2017	2	0%	45	█ Towing Bridle Install - Tug											
T3160	Anchor & Chain Install - Tug	Feb-06-2017	Mar-03-2017	20	0%	26	█ Anchor & Chain Install - Tug											
T3190	Portable Fire Suppression Equipment Install - Tug	Feb-06-2017	Feb-10-2017	5	0%	41	█ Portable Fire Suppression Equipment Install - Tug											
T3210	Window Wiper System Install - Tug	Feb-06-2017	Feb-10-2017	5	0%	42	█ Window Wiper System Install - Tug											
T3220	Window Washer System Install - Tug	Feb-06-2017	Feb-10-2017	5	0%	42	█ Window Washer System Install - Tug											
T3230	Laundry Equipment Install - Tug	Feb-06-2017	Feb-17-2017	10	0%	37	█ Laundry Equipment Install - Tug											
T3300	Ship's Interior / Exterior Communication System Install - Tug	Feb-06-2017	Mar-17-2017	30	0%	17	█ Ship's Interior / Exterior Communication System Install - Tug											
T4220	HT Cooling Water Heater 2 - 54kw Install - Tug	Feb-06-2017	Feb-10-2017	5	0%	10	█ HT Cooling Water Heater 2 - 54kw Install - Tug											
T4260	Reduction Gearbox Heaters Install - Tug	Feb-06-2017	Feb-10-2017	5	0%	22	█ Reduction Gearbox Heaters Install - Tug											
T1030	Shore Power Available - Tug	Feb-07-2017	Feb-07-2017	1	0%	-24	█ Shore Power Available - Tug											
T5650	Transformer T2 System Component Check - Tug	Feb-07-2017	Feb-09-2017	2	0%	-5	█ Transformer T2 System Component Check - Tug											
T5660	Transformer T3 System Component Check - Tug	Feb-07-2017	Feb-09-2017	2	0%	-5	█ Transformer T3 System Component Check - Tug											
T1270	Beier Bow Thruster Control System Component Check - Tug	Feb-08-2017	Feb-08-2017	1	0%	44	█ Beier Bow Thruster Control System Component Check - Tug											

▶ Remaining Level of Effort █ Critical Remaining Work
▶ Actual Level of Effort ◆ Milestone
█ Actual Work ▶ Summary
█ Remaining Work





Activity ID	Activity Name	Start	Finish	Original Duration	Physical % Complete	Total Float	2017											
							Qtr 1			Qtr 2			Qtr 3			Qtr 4		
							Feb	Mar	Apr	May	Jun	Jul	Aug	Sep	Oct	Nov		
T3890	Beier DP System Component Check - Tug	Feb-08-2017	Feb-14-2017	5	0%	48	■ Beier DP System Component Check - Tug											
T1260	Beier PMS System Component Check - Tug	Feb-08-2017	Feb-13-2017	3	0%	21	■ Beier PMS System Component Check - Tug											
T6130	Auxiliary Generator Engine System Component Check - Tug	Feb-13-2017	Feb-17-2017	5	0%	26	■ Auxiliary Generator Engine System Component Check - Tug											
T6320	Fire Detection & Alarm System Component Check - Tug	Feb-13-2017	Feb-21-2017	7	0%	28	■ Fire Detection & Alarm System Component Check - Tug											
T6240	Emergency Generator Engine System Component Check - Tug	Feb-13-2017	Feb-20-2017	5	0%	25	■ Emergency Generator Engine System Component Check - Tug											
T2980	Vents & Sounds Operational Test - Tug	Feb-15-2017	Feb-17-2017	3	0%	39	■ Vents & Sounds Operational Test - Tug											
T3000	Deck Drains Operational Test - Tug	Feb-15-2017	Feb-17-2017	3	0%	39	■ Deck Drains Operational Test - Tug											
T1250	Beier MAMS System Component Check - Tug	Feb-15-2017	Feb-24-2017	7	0%	12	■ Beier MAMS System Component Check - Tug											
T6230	Emergency Generator System Component Check - Tug	Feb-16-2017	Feb-20-2017	3	0%	23	■ Emergency Generator System Component Check - Tug											
T2930	Hydraulic Transfer System Operational Test - Tug	Feb-20-2017	Feb-22-2017	3	0%	36	■ Hydraulic Transfer System Operational Test - Tug											
T6120	Auxiliary Generator System Component Check - Tug	Feb-23-2017	Feb-27-2017	3	0%	19	■ Auxiliary Generator System Component Check - Tug											
T1240	Vosta DCMS System Component Check - Tug	Mar-01-2017	Mar-01-2017	1	0%	34	■ Vosta DCMS System Component Check - Tug											
T2970	Exhaust Piping Systems Operational Test - Tug	Mar-01-2017	Mar-06-2017	3	0%	29	■ Exhaust Piping Systems Operational Test - Tug											
T3200	Articulated Boarding Ladder Install - Tug	Mar-02-2017	Mar-08-2017	5	0%	24	■ Articulated Boarding Ladder Install - Tug											
T6050	Shaft Generators System Component Check	Mar-02-2017	Mar-08-2017	5	0%	5	■ Shaft Generators System Component Check											
T2820	Diesel Exhaust Operational Test - Tug	Mar-03-2017	Mar-07-2017	3	0%	-6	■ Diesel Exhaust Operational Test - Tug											
T2910	Stores Crane Hydraulic Piping Operational Test - Tug	Mar-10-2017	Mar-14-2017	3	0%	20	■ Stores Crane Hydraulic Piping Operational Test - Tug											
T6250	Emergency Generator Startup & Test Basic Components - Tug	Mar-22-2017	Mar-22-2017	1	0%	2	■ Emergency Generator Startup & Test Basic Components - Tug											
T5580	Finish Milestone Equipment Install - Tug		Mar-27-2017	0	0%	11	◆ Finish Milestone Equipment Install - Tug											
T4850	Water Mist Repeater Panel 1	Mar-29-2017	Mar-30-2017	2	0%	5	■ Water Mist Repeater Panel 1											
T4860	Water Mist Logic Unit	Mar-29-2017	Mar-30-2017	2	0%	5	■ Water Mist Logic Unit											
T4700	Steering Hydraulic Unit 1 - Motor 2 - 30kw+0.18kw	Apr-06-2017	Apr-12-2017	5	0%	-2	■ Steering Hydraulic Unit 1 - Motor 2 - 30kw+0.18kw											
T4710	Steering Hydraulic Unit 2 - Motor 2 - 30kw+0.18kw	Apr-06-2017	Apr-12-2017	5	0%	-2	■ Steering Hydraulic Unit 2 - Motor 2 - 30kw+0.18kw											
T4880	Water Mist System Control Panel 15X20hp	Apr-06-2017	Apr-12-2017	5	0%	-4	■ Water Mist System Control Panel 15X20hp											
T4890	Water Mist System Control Panel 2x10hp	Apr-06-2017	Apr-12-2017	5	0%	-4	■ Water Mist System Control Panel 2x10hp											
T4540	Fuel Circulation Pump 1 Duty - 2hp - Tug	Apr-11-2017	Apr-14-2017	4	0%	-37	■ Fuel Circulation Pump 1 Duty - 2hp - Tug											
T4550	Fuel Circulation Pump 2 Duty - 2hp - Tug	Apr-11-2017	Apr-14-2017	4	0%	-37	■ Fuel Circulation Pump 2 Duty - 2hp - Tug											
T4460	Reduction Gear Standby Oil Pump 2 - 10hp (see note 6)	Apr-11-2017	Apr-17-2017	5	0%	-38	■ Reduction Gear Standby Oil Pump 2 - 10hp (see note 6)											
T4580	Air Compressor 2 - 20hp Startup & Test - Tug	Apr-11-2017	Apr-14-2017	4	0%	-37	■ Air Compressor 2 - 20hp Startup & Test - Tug											
T4610	Sump Pump 2 - 3hp	Apr-11-2017	Apr-14-2017	4	0%	-4	■ Sump Pump 2 - 3hp											
T4620	Bilge Pump 2 - 5hp Startup & Test - Tug	Apr-11-2017	Apr-14-2017	4	0%	-4	■ Bilge Pump 2 - 5hp Startup & Test - Tug											
T4660	Hydraulic Steering Unit 1 - Motor 1 - 30kw	Apr-11-2017	Apr-13-2017	3	0%	-3	■ Hydraulic Steering Unit 1 - Motor 1 - 30kw											
T4670	Hydraulic Steering Unit 2 - Motor 1 - 30kw	Apr-11-2017	Apr-13-2017	3	0%	-3	■ Hydraulic Steering Unit 2 - Motor 1 - 30kw											
T4730	Sandseal Pump 2 - 10hp	Apr-11-2017	Apr-14-2017	4	0%	-6	■ Sandseal Pump 2 - 10hp											
T4650	CPP Backup Pump 2 - 30 hp - Tug	Apr-11-2017	Apr-13-2017	3	0%	-3	■ CPP Backup Pump 2 - 30 hp - Tug											
T4800	Emergency Fire Pump - 40hp - Tug	Apr-11-2017	Apr-17-2017	5	0%	-5	■ Emergency Fire Pump - 40hp - Tug											
T5110	Engine Room Exhaust Fan 2 - 25HP - Tug	Apr-11-2017	Apr-12-2017	2	0%	-1	■ Engine Room Exhaust Fan 2 - 25HP - Tug											
T5120	Lower Engine Room Supply Fan 2 - 20HP (see note 6) Startup & Test - Tug	Apr-11-2017	Apr-17-2017	5	0%	-4	■ Lower Engine Room Supply Fan 2 - 20HP (see note 6) Startup & Test - Tug											
T5560	Rescue Boat Davit Winch - 10hp (see note 6)	Apr-11-2017	Apr-17-2017	5	0%	-5	■ Rescue Boat Davit Winch - 10hp (see note 6)											

▶ Remaining Level of Effort ■ Critical Remaining Work
▶ Actual Level of Effort ◆ Milestone
█ Actual Work ▶ Summary
█ Remaining Work





Activity ID	Activity Name	Start	Finish	Original Duration	Physical % Complete	Total Float	2017															
							Qtr 1		Qtr 2			Qtr 3		Qtr 4								
							Feb	Mar	Apr	May	Jun	Jul	Aug	Sep	Oct	Nov						
T1650	6600V Switchboard System Component Check - Tug	Apr-12-2017	Apr-24-2017	9	0%	-26			█													
T4290	Port Engine Raw Water Cooling Pump - 50hp	Apr-14-2017	Apr-20-2017	5	0%	-47			█													
T4300	Engine Raw Water Cooling Pump Standby- 50hp - Tug	Apr-14-2017	Apr-20-2017	5	0%	-47			█													
T4310	Starboard Engine Raw Water Cooling Pump- 50hp	Apr-14-2017	Apr-20-2017	5	0%	-47			█													
T4320	High Temp. Cooling Water Heater 1 - 54kw	Apr-14-2017	Apr-17-2017	2	0%	-38			█													
T4330	LT Fresh Water Cooling Pump 1 - 30hp Startup & Test - Tug	Apr-14-2017	Apr-20-2017	5	0%	-41			█													
T4340	LT Fresh Water Cooling Pump 2 - 30hp Startup & Test - Tug	Apr-14-2017	Apr-20-2017	5	0%	-41			█													
T4350	LT Fresh Water Cooling Pump Standby - 30hp Startup & Test - Tug	Apr-14-2017	Apr-20-2017	5	0%	-41			█													
T4390	Main Engine Pre-Lube Oil Pump 1 - 13.2kw Startup & Test - Tug	Apr-14-2017	Apr-18-2017	3	0%	-39			█													
T4410	Reduction Gear Standby Oil Pump 1 - 5hp	Apr-14-2017	Apr-17-2017	2	0%	-38			█													
T4440	Engine Pre-Lube Oil Pump Standby - 13.2kw - Tug	Apr-14-2017	Apr-20-2017	5	0%	-41			█													
T4450	Main Engine Pre-Lube Oil Pump 2 - 13.2kw Startup & Test - Tug	Apr-14-2017	Apr-18-2017	3	0%	-39			█													
T4510	Fuel Oil Transfer Pump 1 - 10hp - Tug	Apr-14-2017	Apr-19-2017	4	0%	-43			█													
T4520	Fuel Oil Transfer Pump 2 - 10hp - Tug	Apr-14-2017	Apr-19-2017	4	0%	-43			█													
T4590	Bilge Pump 1 - 5hp Startup & Test - Tug	Apr-14-2017	Apr-19-2017	4	0%	-7			█													
T4600	Sump Pump 1 - 3hp	Apr-14-2017	Apr-19-2017	4	0%	-7			█													
T4480	Dirty Oil Pump - 30hp - Tug	Apr-14-2017	Apr-19-2017	4	0%	-7			█													
T4680	Steering Gear Hydraulic Oil Pump 1 - 1hp	Apr-14-2017	Apr-19-2017	4	0%	-7			█													
T4690	Steering Gear Hydraulic Oil Pump 2 - 1hp	Apr-14-2017	Apr-19-2017	4	0%	-7			█													
T4830	Ballast Pump - 40hp Startup & Test - Tug	Apr-14-2017	Apr-20-2017	5	0%	-8			█													
T4770	Potable Water Pump 2 - 15hp	Apr-14-2017	Apr-18-2017	3	0%	-12			█													
T4630	CPP Backup Pump 1 - 30 hp - Tug	Apr-14-2017	Apr-18-2017	3	0%	-6			█													
T4640	Reduction Gear Hydraulic Pump Starboard - 7.5 hp	Apr-14-2017	Apr-20-2017	5	0%	-8			█													
T4810	Greywater Discharge Pump - 7.5hp - Tug	Apr-14-2017	Apr-19-2017	4	0%	-10			█													
T4910	Main Chill Water Cooling Pump - 10hp Startup & Test - Tug	Apr-14-2017	Apr-20-2017	5	0%	-8			█													
T4920	Standby Chilled Water Cooling Pump - 10hp	Apr-14-2017	Apr-20-2017	5	0%	-8			█													
T4790	Main Fire Pump 1 - 40hp Startup & Test - Tug	Apr-14-2017	Apr-20-2017	5	0%	-8			█													
T5000	Upper Engine Room Supply Fan 1 - 25HP	Apr-14-2017	Apr-17-2017	2	0%	-4			█													
T5010	AFT Auxiliary Machinery Room Exhaust Fan 2 - 7.5HP Startup & Test - Tug	Apr-14-2017	Apr-17-2017	2	0%	-4			█													
T5020	Paint Locker Exhaust - 1HP	Apr-14-2017	Apr-17-2017	2	0%	-4			█													
T5100	Engine Room Exhaust Fan 1 - 25HP - Tug	Apr-14-2017	Apr-17-2017	2	0%	-4			█													
T5180	HVAC PAC-1 Control Room Package Unit 1	Apr-14-2017	Apr-17-2017	2	0%	-16			█													
T5190	HVAC DH-1 - Exercise Room Main Deck Duct Heater	Apr-14-2017	Apr-17-2017	2	0%	-16			█													
T5200	HVAC DH-2 -Crew Lounge Main Deck Duct Heater	Apr-14-2017	Apr-17-2017	2	0%	-16			█													
T5210	HVAC DH-3 - Galley Duct Heater	Apr-14-2017	Apr-17-2017	2	0%	-16			█													
T5220	HVAC DH-5 - Pilot House Duct Heater	Apr-14-2017	Apr-17-2017	2	0%	-16			█													
T5230	HVAC AH-3 AHU - Fresh Air System 02 Dk	Apr-14-2017	Apr-17-2017	2	0%	-16			█													
T5240	HVAC DH-8 - Electronics Rm Duct Heater	Apr-14-2017	Apr-17-2017	2	0%	-16			█													
T5250	HVAC DH-4 - Fresh Air System Duct Heater	Apr-14-2017	Apr-17-2017	2	0%	-16			█													

Remaining Level of Effort
 Critical Remaining Work
 Actual Level of Effort
 Milestone
 Actual Work
 Summary
 Remaining Work





Activity ID	Activity Name	Start	Finish	Original Duration	Physical % Complete	Total Float	2017															
							Qtr 1			Qtr 2			Qtr 3			Qtr 4						
							Feb	Mar	Apr	May	Jun	Jul	Aug	Sep	Oct	Nov						
T5260	HVAC PAC-2 Control Room Package Unit 2 Standby	Apr-14-2017	Apr-17-2017	2	0%	-16				■												
T5270	HVAC DH-7 - Electronics Rm Duct Heater	Apr-14-2017	Apr-17-2017	2	0%	-16				■												
T2950	Shaft Seal Hydraulic Piping Operational Test - Tug	Apr-17-2017	Apr-19-2017	3	0%	-6				■												
T4370	Lube Oil Separator Control Panel 1- 1.5kw Startup & Test - Tug	Apr-17-2017	Apr-25-2017	7	0%	-49				■												
T4380	Lube Oil Separator Control Panel 2- 1.5kw Startup & Test - Tug	Apr-17-2017	Apr-25-2017	7	0%	-49				■												
T4470	Oil Water Separator	Apr-17-2017	Apr-21-2017	5	0%	-9				■												
T4840	Ballast Water Treatment Power Cabinet Startup & Test - Tug	Apr-17-2017	Apr-21-2017	5	0%	-9				■												
T4740	Potable Water Pump 1 - 15hp	Apr-17-2017	Apr-19-2017	3	0%	-13				■												
T4940	Auxiliary Machinery Room Heater - 5kw Startup & Test - Tug	Apr-17-2017	Apr-19-2017	3	0%	-6				■												
T4950	Emergency Generator Room Heater - 5kw - Tug	Apr-17-2017	Apr-19-2017	3	0%	-6				■												
T4960	Engine Room Unit Heater - Tug	Apr-17-2017	Apr-19-2017	3	0%	-6				■												
T4970	Steering Gear Room Unit Heater - 5kw	Apr-17-2017	Apr-19-2017	3	0%	-6				■												
T4980	Galley Deck Unit Heaters - 5kw - Tug	Apr-17-2017	Apr-19-2017	3	0%	-6				■												
T4990	ArtiCouple Room Unit Heater - 5kw Startup & Test - Tug	Apr-17-2017	Apr-19-2017	3	0%	-6				■												
T5030	Fwd Auxiliary Room Supply - 1/3HP - Tug	Apr-17-2017	Apr-18-2017	2	0%	-5				■												
T5040	Fwd Auxiliary Room Exhaust - 1/3HP - Tug	Apr-17-2017	Apr-18-2017	2	0%	-5				■												
T5050	Coupler Rm Supply 1 - 1HP Startup & Test - Tug	Apr-17-2017	Apr-18-2017	2	0%	-5				■												
T5060	Coupler Rm Supply 2 - 1HP Startup & Test - Tug	Apr-17-2017	Apr-18-2017	2	0%	-5				■												
T5070	Coupler Rm Exhaust 1 Startup & Test - 1HP - Tug	Apr-17-2017	Apr-18-2017	2	0%	-5				■												
T5080	Coupler Room Exhaust 2 - 1HP - Tug	Apr-17-2017	Apr-18-2017	2	0%	-5				■												
T5090	Emergency Generator Room Exhaust - 1/3HP Startup & Test - Tug	Apr-17-2017	Apr-18-2017	2	0%	-5				■												
T5170	Air Handler Raw Water Cooling Pump - 1hp Startup & Test - Tug	Apr-17-2017	Apr-18-2017	2	0%	-17				■												
T5280	Galley Range	Apr-17-2017	Apr-17-2017	1	0%	-4																
T5290	Galley Fryer - Tug	Apr-17-2017	Apr-17-2017	1	0%	-4																
T5300	EF-3 Galley Hood Exhaust Fan - 1/2hp - Tug	Apr-17-2017	Apr-17-2017	1	0%	-4																
T4360	Auxiliary Generator Jacket Water Heater Startup & Test - Tug	Apr-18-2017	Apr-24-2017	5	0%	-43				■												
T4420	Lube Oil Heater 1 - 3kw Startup & Test - Tug	Apr-18-2017	Apr-20-2017	3	0%	-41				■												
T4430	Lube Oil Heater 2 - 3kw Startup & Test - Tug	Apr-18-2017	Apr-20-2017	3	0%	-41				■												
T4560	Air Compressor 1 - 20hp Startup & Test - Tug	Apr-18-2017	Apr-21-2017	4	0%	-42				■												
T5500	Laundry Dryer	Apr-18-2017	Apr-19-2017	2	0%	-6				■												
T5520	Heat Recovery Evaporator Seawater Pump 1 - 7.5hp	Apr-18-2017	Apr-24-2017	5	0%	-11				■												
T5530	Heat Recovery Evaporator Seawater Pump 2 - 7.5hp	Apr-18-2017	Apr-24-2017	5	0%	-11				■												
T5540	Heat Recovery Evaporator Distillate Pump 1 - 0.75hp	Apr-18-2017	Apr-24-2017	5	0%	-11				■												
T5550	Heat Recovery Evaporator Distillate Pump 2 - 0.75hp	Apr-18-2017	Apr-18-2017	1	0%	-7																
T4250	Milestone: Main Engine System Components Completion - Tug		Apr-18-2017	0	0%	-36				◆												
T4280	Milestone: Reduction Gear Components Completion - Tug		Apr-18-2017	0	0%	-24				◆												
T5610	Finish Milestone HVAC Equipment Startup & Test - Tug		Apr-18-2017	0	0%	-17				◆												
T4930	Heaters, Fans and Fire Damper	Apr-19-2017	May-02-2017	10	0%	-16				■												
T5600	Finish Milestone Machinery Ventilation Startup & Test - Tug		Apr-19-2017	0	0%	-6				◆												

▶ Remaining Level of Effort ■ Critical Remaining Work
▶ Actual Level of Effort ◆ Milestone
█ Actual Work ▶ Summary
█ Remaining Work





Activity ID	Activity Name	Start	Finish	Original Duration	Physical % Complete	Total Float	2017															
							Qtr 1			Qtr 2			Qtr 3			Qtr 4						
							Feb	Mar	Apr	May	Jun	Jul	Aug	Sep	Oct	Nov						
T2890	Bilge System Operational Test - Tug	Apr-20-2017	Apr-24-2017	3	0%	-7																
T2920	Steering Hydraulic Piping Operational Test - Tug	Apr-20-2017	Apr-24-2017	3	0%	-7																
T2790	Main Engine Salt Water Cooling Operational Test - Tug	Apr-21-2017	Apr-25-2017	3	0%	-47																
T2900	CPP Hydraulic Piping Operational Test - Tug	Apr-21-2017	Apr-25-2017	3	0%	-8																
T2990	Fire Main System Operational Test - Tug	Apr-21-2017	Apr-25-2017	3	0%	-8																
T4530	Fuel Oil Digital Flow Meter - Tug	Apr-21-2017	Apr-26-2017	4	0%	-48																
T4570	Air Dryer - Service Air System Startup & Test - Tug	Apr-21-2017	Apr-27-2017	5	0%	-13																
T4500	Oily Content Monitor	Apr-21-2017	Apr-26-2017	4	0%	-12																
T4750	UV Purifier	Apr-21-2017	Apr-25-2017	3	0%	-17																
T4760	Potable Water Recirculation Pump - 1/3HP	Apr-21-2017	Apr-24-2017	2	0%	-16																
T4820	Marine Sanitary Device (MSD) System Test- Tug	Apr-21-2017	May-04-2017	10	0%	-21																
T4870	Water Mist Repeater Panel 2	Apr-21-2017	Apr-24-2017	2	0%	-12																
T5690	Vosta DCMS Start & Test Basic Components	Apr-21-2017	Apr-21-2017	1	0%	-2																
T5700	Beier MAMS Startup & Test Basic Components - Tug	Apr-21-2017	Apr-24-2017	2	0%	-28																
T5130	Monorail Hoist 3 - 2.4 hp	Apr-21-2017	Apr-26-2017	4	0%	-12																
T5140	Monorail Hoist 1 - 2.4 hp	Apr-21-2017	Apr-26-2017	4	0%	-12																
T5150	Monorail Hoist 2 - 2.4 hp	Apr-21-2017	Apr-26-2017	4	0%	-12																
T5310	Coffee Maker Startup & Test - Tug	Apr-21-2017	Apr-21-2017	1	0%	-8																
T5320	Laundry Washer Startup & Test - Tug	Apr-21-2017	Apr-21-2017	1	0%	-8																
T5330	Galley 1 Section Freezer - Tug	Apr-21-2017	Apr-21-2017	1	0%	-8																
T5340	Pantry 2 Section Freezer	Apr-21-2017	Apr-21-2017	1	0%	-8																
T5350	Galley 2 Section Refrigerator - Tug	Apr-21-2017	Apr-21-2017	1	0%	-8																
T5360	Mess Refrigerator Startup & Test - Tug	Apr-21-2017	Apr-21-2017	1	0%	-8																
T5370	Chief Office Refrigerator Startup & Test - Tug	Apr-21-2017	Apr-21-2017	1	0%	-8																
T5380	Crew Lounge Refrigerator - Tug	Apr-21-2017	Apr-21-2017	1	0%	-8																
T5390	Water Cooler Crew Lounge	Apr-21-2017	Apr-21-2017	1	0%	-8																
T5400	Chest Freezer Startup & Test - Tug	Apr-21-2017	Apr-21-2017	1	0%	-8																
T5410	Toaster	Apr-21-2017	Apr-21-2017	1	0%	-8																
T5420	Galley Hood Ansul System, 3A	Apr-21-2017	Apr-21-2017	1	0%	-8																
T5430	Ice Maker - Mess	Apr-21-2017	Apr-21-2017	1	0%	-8																
T5440	Salad Bar	Apr-21-2017	Apr-21-2017	1	0%	-8																
T5450	Microwave Oven Galley Startup & Test - Tug	Apr-21-2017	Apr-21-2017	1	0%	-8																
T5460	Galley Lights Hood	Apr-21-2017	Apr-21-2017	1	0%	-8																
T5470	Garbage Disposal - 3/4hp	Apr-21-2017	Apr-21-2017	1	0%	-8																
T5480	Dishwasher - Tug	Apr-21-2017	Apr-21-2017	1	0%	-8																
T5490	Water Cooler Mess	Apr-21-2017	Apr-21-2017	1	0%	-8																
T5510	Heat Recovery Evaporator Salinity Panel	Apr-21-2017	Apr-27-2017	5	0%	-14																
T5620	Finish Milestone Galley and Mess Equipment Stratup & Test - Tug		Apr-21-2017	0	0%	-8																
T2870	Starting Air System Operational Test - Tug	Apr-24-2017	Apr-26-2017	3	0%	-42																

Remaining Level of Effort
 Critical Remaining Work
 Actual Level of Effort
 Milestone
 Actual Work
 Summary
 Remaining Work





Activity ID	Activity Name	Start	Finish	Original Duration	Physical % Complete	Total Float	2017														
							Qtr 1			Qtr 2			Qtr 3			Qtr 4					
							Feb	Mar	Apr	May	Jun	Jul	Aug	Sep	Oct	Nov					
T3020	Ballast Piping Operational Test - Tug	Apr-24-2017	Apr-26-2017	3	0%	-9				■			■								
T4900	Finish Milestone: Water Mist System Components - Tug		Apr-24-2017	0	0%	-12				◆			◆								
T5820	6600V Switchboard Startup & Test Basic Components - Tug	Apr-25-2017	Apr-27-2017	3	0%	-26				■			■								
T6140	Auxiliary Generator System Startup & Test Basic Components - Tug	Apr-25-2017	Apr-25-2017	1	0%	-21															
T4780	Finish Milestone: Potable Water System Components - Tug		Apr-25-2017	0	0%	-17				◆			◆								
T1940	Articouple Group Motor Starter Test - Tug	Apr-26-2017	Apr-28-2017	3	0%	-16				■			■								
T2800	Auxiliary Salt Water Cooling Operational Test - Tug	Apr-26-2017	Apr-28-2017	3	0%	-47				■			■								
T2960	Potable Water System Operational Test - Tug	Apr-26-2017	Apr-28-2017	3	0%	-17				■			■								
T4400	Lube Oil Separator Startup & Test - Tug	Apr-26-2017	May-02-2017	5	0%	-49				■			■								
T5710	Beier PMS Start & Test Basic Components - Tug	Apr-26-2017	Apr-27-2017	2	0%	-31				■			■								
T5800	Beier Bow Thruster Control Startup & Test Basic Components - Tug	Apr-26-2017	Apr-26-2017	1	0%	-10															
T5810	Beier DP System Startup & Test Basic Components - Tug	Apr-26-2017	Apr-27-2017	2	0%	-2				■			■								
T6330	Fire Detection & Alarm Start & Test Basic Components	Apr-26-2017	May-01-2017	4	0%	-17				■			■								
T5160	Finish Milestone: Maintenance Equipment Components Startup & Test - Tug		Apr-26-2017	0	0%	-12				◆			◆								
T2850	Fuel Oil Transfer System Operational Test - Tug	Apr-27-2017	May-01-2017	3	0%	-48				■			■								
T2880	Service Air System Operational Test - Tug	Apr-28-2017	May-02-2017	3	0%	-13				■			■								
T2810	Fresh Water Cooling Operational Test - Tug	May-01-2017	May-03-2017	3	0%	-47				■			■								
T2940	Articouple Hydraulic Piping Operational Test - Tug	May-01-2017	May-03-2017	3	0%	-16				■			■								
T3030	Water Mist Piping Operational Test	May-01-2017	May-03-2017	3	0%	-14				■			■								
T4490	Oily Water Separator	May-01-2017	May-03-2017	3	0%	-17				■			■								
T1660	Transformer T1 System Component Check - Tug	May-01-2017	May-02-2017	2	0%	-28				■			■								
T2860	Fuel Oil Service System Operational Test - Tug	May-02-2017	May-04-2017	3	0%	-48				■			■								
T2830	Lube Oil Operational Test - Tug	May-03-2017	May-05-2017	3	0%	-49				■			■								
T3040	Chill Water Piping Operational Test - Tug	May-03-2017	May-05-2017	3	0%	-16				■			■								
T5890	Transformer T1 Start & Test Basic Components	May-03-2017	May-04-2017	2	0%	-28				■			■								
T2840	Dirty Oil Operational Test - Tug	May-04-2017	May-08-2017	3	0%	-17				■			■								
T5860	480V Static Converter Startup & Test Basic Components - Tug	May-04-2017	May-08-2017	3	0%	-30				■			■								
T6060	Shaft Generators Start & Test Basic Components	May-04-2017	May-05-2017	2	0%	-35				■			■								
T3010	Plumbing Drainage Operational Test	May-05-2017	May-09-2017	3	0%	-21				■			■								
T6150	Auxiliary Generator Engine System Startup & Test Basic Components - Tug	May-05-2017	May-09-2017	3	0%	-28				■			■								
T6260	Emergency Generator Engine Start & Test Basic Components - Tug	May-05-2017	May-09-2017	3	0%	-29				■			■								
T1060	Start Main Engines - Tug	May-08-2017	May-16-2017	7	0%	-49				■			■								
T3050	Finish Milestone: Piping System Operational Tests - Tug		May-09-2017	0	0%	-18				◆			◆								
T6160	Auxiliary Generator Engine First Startup Unloaded -Tug	May-10-2017	May-12-2017	3	0%	-28				■			■								
T6300	Emergency Generator Engine First Start Up (Unloaded) - Tug	May-10-2017	May-12-2017	3	0%	-29				■			■								
T6170	Auxiliary Generator First Startup - Tug	May-15-2017	May-16-2017	2	0%	-28				■			■								
T6290	Emergency Generator First Start Up - Tug	May-15-2017	May-16-2017	2	0%	-29				■			■								
T1070	Load Test Auxiliary Generator - Tug	May-22-2017	May-23-2017	2	0%	-28				■			■								
T1670	6600V Barge Connector Test - Tug	Jun-05-2017	Jun-08-2017	4	0%	-46				■			■								

▶ Remaining Level of Effort ■ Critical Remaining Work
▶ Actual Level of Effort ◆ Milestone
■ Actual Work ▶ Summary
■ Remaining Work





Activity ID	Activity Name	Start	Finish	Original Duration	Physical % Complete	Total Float	2017															
							Qtr 1			Qtr 2			Qtr 3			Qtr 4						
							Feb	Mar	Apr	May	Jun	Jul	Aug	Sep	Oct	Nov						
T1100	Test 6.6kV to Multi-Drive & Main Switchboard - Tug	Jun-15-2017	Jun-20-2017	4	0%	-44																
Barge - Hull # 253		Sep-15-2016 A	Jun-29-2017	214		-35	Jun-29-2017, Barge - Hull # 253															
Dredge Piping Systems - Barge		Sep-15-2016 A	Mar-15-2017	129		15	Mar-15-2017, Dredge Piping Systems - Barge															
B6170	Dredge Load & Unload System Install - Barge	Sep-15-2016 A	Feb-17-2017	63	90%	23																
B1800	Jet Water Install - Barge	Sep-15-2016 A	Feb-10-2017	42	95%	28																
B1810	Gland Seal Install - Barge	Sep-15-2016 A	Feb-13-2017	34	95%	28																
B1830	Draghead Visor Hydraulic Piping Install - Barge	Sep-15-2016 A	Feb-13-2017	28	90%	26																
B1980	Jet Water Pressure Test - Barge	Sep-16-2016 A	Feb-14-2017	4	90%	28																
B2020	Gland Seal Pressure Test - Barge	Feb-13-2017	Feb-17-2017	4	0%	28																
B2260	Draghead Visor Hydraulic Piping Flush & Pressure Test - Barge	Feb-13-2017	Feb-23-2017	8	0%	26																
B2180	Jet Water Clean & Flush - Barge	Feb-14-2017	Feb-17-2017	3	0%	28																
B2230	Gland Seal Clean & Flush - Barge	Feb-17-2017	Feb-22-2017	3	0%	28																
B2410	Jet Water Walk Down & Rectification - Barge	Feb-17-2017	Feb-22-2017	3	0%	28																
B1970	Dredge Load & Unload System Pressure Test - Barge	Feb-20-2017	Feb-23-2017	4	0%	23																
B2460	Gland Seal Walk Down and Rectification - Barge	Feb-22-2017	Feb-27-2017	3	0%	28																
B2500	Draghead Visor Hydraulic Piping Walk Down & Rectification - Barge	Feb-23-2017	Feb-28-2017	3	0%	26																
B2170	Dredge Load & Unload System Clean & Flush - Barge	Feb-24-2017	Feb-28-2017	3	0%	23																
B2400	Dredge Load & Unload System Walk Down & Rectification - Barge	Mar-01-2017	Mar-03-2017	3	0%	23																
B2480	Main Hydraulic (Valve Stand) Piping Walk Down & Rectification - Barge	Mar-13-2017	Mar-15-2017	3	0%	-16																
Install Switch Gear & Dredge Controls - Barge		Jan-23-2017 A	Feb-08-2017	4		50	Feb-08-2017, Install Switch Gear & Dredge Controls - Barge															
B1190	24V DC Generator Start System Install - Barge	Jan-23-2017 A	Jan-27-2017 A	2	100%																	
B1180	24V DC Panel Install - Barge	Feb-06-2017	Feb-08-2017	3	0%	38																
B1200	HPU 1 Isolator Install - Barge	Feb-06-2017	Feb-08-2017	3	0%	50																
B1210	HPU 2 Isolator Install - Barge	Feb-06-2017	Feb-08-2017	3	0%	50																
B6080	HPU 3 Isolator Install - Barge	Feb-06-2017	Feb-08-2017	3	0%	50																
B6090	HPU 4 Isolator Install - Barge	Feb-06-2017	Feb-08-2017	3	0%	1																
Cable Pulls - Barge		Sep-15-2016 A	Mar-07-2017	122		31	Mar-07-2017, Cable Pulls - Barge															
B1240	Multi-Drive PWM Converter (690V) (ECR) Cable Pull - Barge	Sep-15-2016 A	Feb-17-2017	45	80%	-5																
B1250	HPU 1 Isolator Cable Pull - Barge	Sep-15-2016 A	Feb-14-2017	3	70%	46																
B6100	HPU 2 Isolator Cable Pull - Barge	Sep-15-2016 A	Feb-14-2017	3	70%	46																
B1270	HPU 3 Isolator Cable Pull - Barge	Sep-15-2016 A	Feb-14-2017	3	70%	46																
B1280	HPU 4 Isolator Cable Pull - Barge	Sep-15-2016 A	Feb-14-2017	3	70%	-4																
B5320	Transformer T4 Cable Pull - Barge	Nov-01-2016 A	Feb-14-2017	3	50%	-4																
B5330	Transformer T5 Cable Pull - Barge	Nov-01-2016 A	Feb-14-2017	3	50%	-4																
B5340	Transformer T6 Cable Pull - Barge	Nov-01-2016 A	Jan-19-2017 A	3	100%																	
B6120	Ship's Service Generator ECM Cable Pull - Barge	Nov-06-2016 A	Feb-14-2017	2	50%	26																
B6110	Gland Seal Pump VFD Cable Pull - Barge	Dec-01-2016 A	Jan-19-2017 A	3	100%																	
B5280	6.6 KV Switchgear MVSB B1 Cable Pull - Barge	Feb-06-2017	Feb-08-2017	3	0%	36																
B5310	6.6 KV Switchgear MVSB B2 Cable Pull - Barge	Feb-06-2017	Feb-08-2017	3	0%	36																

Remaining Level of Effort
 Critical Remaining Work
 Actual Level of Effort
 Milestone
 Actual Work
 Summary
 Remaining Work





Activity ID	Activity Name	Start	Finish	Original Duration	Physical % Complete	Total Float	2017															
							Qtr 1			Qtr 2			Qtr 3			Qtr 4						
							Feb	Mar	Apr	May	Jun	Jul	Aug	Sep	Oct	Nov						
B5510	Transformer T7 Cable Pull - Barge	Mar-06-2017	Mar-07-2017	2	0%	-38																
Power Distribution & Lighting - Barge		Feb-06-2017 A	Apr-10-2017	46		-4	Apr-10-2017, Power Distribution & Lighting - Barge															
B1010	Shore Power Energize	Feb-06-2017 A	Feb-17-2017	10	0%	-24	Shore Power Energize															
B1530	480V Main Switchboard (ECR) System Component Check - Barge	Feb-13-2017	Feb-28-2017	12	0%	-31	480V Main Switchboard (ECR) System Component Check - Barge															
B1000	Shore Power Available - Barge	Feb-20-2017		0	0%	-24	Shore Power Available - Barge															
MST1010	Milestone: 480V Power Available from Main Switchboard - Barge	Mar-20-2017		0	0%	-31	Milestone: 480V Power Available from Main Switchboard - Barge															
B1500	48V / 24V MV & LV UPS Test - Barge	Mar-20-2017	Mar-23-2017	3	0%	-21	48V / 24V MV & LV UPS Test - Barge															
B1540	MCC Section # 1 (480V) (ECR) Test - Barge	Mar-20-2017	Mar-27-2017	5	0%	-30	MCC Section # 1 (480V) (ECR) Test - Barge															
B1550	MCC Section # 2 (480V) (ECR) Test - Barge	Mar-20-2017	Mar-28-2017	6	0%	-31	MCC Section # 2 (480V) (ECR) Test - Barge															
B6150	480VAC Auxiliary Power Panel - P405 (Main Deck Port) Test - Barge	Mar-20-2017	Mar-27-2017	5	0%	-11	480VAC Auxiliary Power Panel - P405 (Main Deck Port) Test - Barge															
B1570	480VAC Auxiliary Power Panel - P406 (ECR) Test - Barge	Mar-20-2017	Mar-27-2017	5	0%	-30	480VAC Auxiliary Power Panel - P406 (ECR) Test - Barge															
B1590	480VAC Auxiliary Power Panel - P407 (AFT Workshop) Test - Barge	Mar-20-2017	Mar-27-2017	5	0%	7	480VAC Auxiliary Power Panel - P407 (AFT Workshop) Test - Barge															
B1690	Ventilation Group Control (480V) (ECR) Test - Barge	Mar-20-2017	Mar-27-2017	5	0%	-18	Ventilation Group Control (480V) (ECR) Test - Barge															
B1600	Primary Distribution Panel P201 (208/120V AC) Test - Barge	Mar-22-2017	Mar-29-2017	5	0%	-38	Primary Distribution Panel P201 (208/120V AC) Test - Barge															
B1610	Engine Room Distribution Panel - P211 (208/120V AC) Test - Barge	Mar-29-2017	Apr-05-2017	5	0%	-38	Engine Room Distribution Panel - P211 (208/120V AC) Test - Barge															
B1620	Pump Room Distribution Panel - P212 (208/120V AC) Test - Barge	Mar-29-2017	Apr-05-2017	5	0%	-12	Pump Room Distribution Panel - P212 (208/120V AC) Test - Barge															
B1630	Main Deck Distribution Panel - P213 (208/120V AC) Test - Barge	Mar-29-2017	Apr-05-2017	5	0%	-24	Main Deck Distribution Panel - P213 (208/120V AC) Test - Barge															
B1640	Tween Deck Distribution Panel P214 (208/120 VAC) Test - Barge	Mar-29-2017	Apr-05-2017	5	0%	-34	Tween Deck Distribution Panel P214 (208/120 VAC) Test - Barge															
B1650	Bow Thruster Room Distribution Panel - P215 (208 / 120V AC) Test - Barge	Mar-29-2017	Apr-05-2017	5	0%	-5	Bow Thruster Room Distribution Panel - P215 (208 / 120V AC) Test - Barge															
B1660	AFT Storage Space Distribution Panel - P216 (208 / 120V AC) Test - Barge	Mar-29-2017	Apr-05-2017	5	0%	-1	AFT Storage Space Distribution Panel - P216 (208 / 120V AC) Test - Barge															
B1670	120V Lighting Panel - PP1 Test - Barge	Mar-29-2017	Apr-05-2017	5	0%	-2	120V Lighting Panel - PP1 Test - Barge															
B1680	120V ECR Computer & Monitoring Power Panel - PP2 Test - Barge	Mar-29-2017	Apr-05-2017	5	0%	-37	120V ECR Computer & Monitoring Power Panel - PP2 Test - Barge															
B1510	24V DC Panel Test - Barge	Apr-05-2017	Apr-10-2017	3	0%	-25	24V DC Panel Test - Barge															
Machinery Support Piping Systems - Barge		Sep-15-2016 A	Mar-10-2017	214		19	Mar-10-2017, Machinery Support Piping Systems - Barge															
B1750	Fire / Washdown System Install - Barge	Sep-15-2016 A	Feb-10-2017	40	95%	11	Fire / Washdown System Install - Barge															
B1760	Fills, Vents, Sounds Install - Barge	Sep-15-2016 A	Feb-10-2017	51	95%	29	Fills, Vents, Sounds Install - Barge															
B1780	Sanitary / Grey Water (Plumbing Drainage) Install - Barge	Sep-15-2016 A	Feb-28-2017	81	80%	19	Sanitary / Grey Water (Plumbing Drainage) Install - Barge															
B1870	Ballast System Pressure Test - Barge	Sep-16-2016 A	Feb-24-2017	4	90%	4	Ballast System Pressure Test - Barge															
B1880	Fire / Washdown System Pressure Test - Barge	Sep-16-2016 A	Feb-14-2017	4	90%	11	Fire / Washdown System Pressure Test - Barge															
B1890	Fills, Vents, Sounds Pressure Test - Barge	Sep-16-2016 A	Feb-14-2017	3	90%	29	Fills, Vents, Sounds Pressure Test - Barge															
B6160	Exhaust Piping Install - Barge	Jan-12-2017 A	Feb-28-2017	46	75%	3	Exhaust Piping Install - Barge															
B1840	Exhaust Piping Pressure Test - Barge	Jan-13-2017 A	Mar-03-2017	4	75%	3	Exhaust Piping Pressure Test - Barge															
B1770	Slurry Valve Flushing Install - Barge	Jan-16-2017 A	Feb-23-2017	71	80%	23	Slurry Valve Flushing Install - Barge															
B1820	E-Closing Valves Install - Barge	Jan-16-2017 A	Jan-20-2017 A	128	100%		E-Closing Valves Install - Barge															
B1850	Combustion Air Pressure Test - Barge	Feb-06-2017	Feb-09-2017	4	0%	35	Combustion Air Pressure Test - Barge															
B1860	Bilge System Pressure Test - Barge	Feb-06-2017	Feb-09-2017	4	0%	34	Bilge System Pressure Test - Barge															
B1910	Fuel Oil Transfer Pressure Test - Barge	Feb-06-2017	Feb-10-2017	5	0%	31	Fuel Oil Transfer Pressure Test - Barge															
B1920	Lube Oil Pressure Test - Barge	Feb-06-2017	Feb-10-2017	5	0%	20	Lube Oil Pressure Test - Barge															
B1930	Dirty / Waste Oil Pressure Test - Barge	Feb-06-2017	Feb-09-2017	4	0%	34	Dirty / Waste Oil Pressure Test - Barge															





Activity ID	Activity Name	Start	Finish	Original Duration	Physical % Complete	Total Float	2017															
							Qtr 1			Qtr 2			Qtr 3			Qtr 4						
							Feb	Mar	Apr	May	Jun	Jul	Aug	Sep	Oct	Nov						
B1940	Potable Water Pressure Test - Barge	Feb-06-2017	Feb-07-2017	2	0%	34																
B1950	Compressed Air Pressure Test - Barge	Feb-06-2017	Feb-09-2017	4	0%	17																
B1990	Fuel Oil Service Pressure Test - Barge	Feb-06-2017	Feb-09-2017	4	0%	14																
B2000	Auxiliary Cooling Pressure Test - Barge	Feb-06-2017	Feb-08-2017	3	0%	-6																
B2010	Generator Cooling Pressure Test - Barge	Feb-06-2017	Feb-09-2017	4	0%	25																
B2030	E-Closing Valves Pressure Test - Barge	Feb-06-2017	Feb-08-2017	3	0%	36																
B2220	Sea Water Cooling Clean & Flush - Barge	Feb-06-2017	Feb-08-2017	3	0%	2																
B2250	Main Hydraulic (Valve Stand) Piping Flush & Pressure Test - Barge	Feb-06-2017	Mar-10-2017	25	0%	-16																
B2490	Deck Crane Hydraulic Piping Walk Down & Rectification - Barge	Feb-06-2017	Feb-08-2017	3	0%	37																
B2140	Potable Water Clean & Flush - Barge	Feb-08-2017	Feb-14-2017	5	0%	34																
B2200	Auxiliary Cooling Clean & Flush - Barge	Feb-09-2017	Feb-15-2017	5	0%	-6																
B2240	E-Closing Valves Clean & Flush - Barge	Feb-09-2017	Feb-13-2017	3	0%	36																
B2450	Sea Water Cooling Walk Down & Rectification - Barge	Feb-09-2017	Feb-13-2017	3	0%	2																
B2050	Combustion Air Clean - Barge	Feb-10-2017	Feb-13-2017	2	0%	35																
B2060	Bilge System Clean & Flush - Barge	Feb-10-2017	Feb-13-2017	2	0%	34																
B2130	Dirty / Waste Oil Clean & Flush - Barge	Feb-10-2017	Feb-14-2017	3	0%	34																
B2150	Compressed Air Clean & Flush - Barge	Feb-10-2017	Feb-13-2017	2	0%	17																
B2190	Fuel Oil Service Clean & Flush - Barge	Feb-10-2017	Feb-16-2017	5	0%	14																
B2210	Generator Cooling System Clean & Flush - Barge	Feb-10-2017	Feb-14-2017	3	0%	25																
B2110	Fuel Oil Transfer Clean & Flush - Barge	Feb-13-2017	Feb-17-2017	5	0%	31																
B2120	Lube Oil Clean & Flush - Barge	Feb-13-2017	Feb-15-2017	3	0%	20																
B2280	Combustion Air Walkdown & Rectification - Barge	Feb-14-2017	Feb-16-2017	3	0%	35																
B2290	Bilge System Walk Down & Rectification - Barge	Feb-14-2017	Feb-16-2017	3	0%	34																
B2380	Compressed Air Walk Down & Rectification - Barge	Feb-14-2017	Feb-16-2017	3	0%	17																
B2470	E-Closing Valves Walk Down & Rectification - Barge	Feb-14-2017	Feb-15-2017	2	0%	36																
B2080	Fire / Washdown System Clean & Flush - Barge	Feb-15-2017	Feb-16-2017	2	0%	11																
B2090	Fills, Vents, & Sounds - Clean & Flush - Barge	Feb-15-2017	Feb-21-2017	5	0%	29																
B2360	Dirty / Waste Oil Walk Down & Rectification - Barge	Feb-15-2017	Feb-17-2017	3	0%	34																
B2370	Potable Water Walk Down & Rectification - Barge	Feb-15-2017	Feb-17-2017	3	0%	34																
B2440	Generator Cooling System Walkdown & Rectification - Barge	Feb-15-2017	Feb-17-2017	3	0%	25																
B2350	Lube Oil Walk Down & Rectification - Barge	Feb-16-2017	Feb-20-2017	3	0%	20																
B2430	Auxiliary Cooling Walk Down and Rectification - Barge	Feb-16-2017	Feb-20-2017	3	0%	-6																
B2310	Fire / Washdown System Walk Down & Rectification - Barge	Feb-17-2017	Feb-21-2017	3	0%	11																
B2420	Fuel Oil Service Walk Down & Rectification - Barge	Feb-17-2017	Feb-21-2017	3	0%	14																
B2340	Fuel Oil Transfer Walk Down & Rectification - Barge	Feb-20-2017	Feb-22-2017	3	0%	31																
B2320	Fills, Vents, Sounds Walk Down & Rectification - Barge	Feb-22-2017	Feb-24-2017	3	0%	29																
B1900	Slurry Valve Flushing Pressure Test - Barge	Feb-24-2017	Feb-27-2017	2	0%	23																
B2070	Ballast System Clean & Flush - Barge	Feb-27-2017	Mar-01-2017	3	0%	4																
B2100	Slurry Valve Flushing Clean and Flush - Barge	Feb-28-2017	Mar-01-2017	2	0%	23																

Remaining Level of Effort
 Critical Remaining Work
 Actual Level of Effort
 Milestone
 Actual Work
 Summary
 Remaining Work





Activity ID	Activity Name	Start	Finish	Original Duration	Physical % Complete	Total Float	2017															
							Qtr 1			Qtr 2			Qtr 3			Qtr 4						
							Feb	Mar	Apr	May	Jun	Jul	Aug	Sep	Oct	Nov						
B1960	Sanitary / Grey Water (Plumbing Drainage) Pressure Test - Barge	Mar-01-2017	Mar-02-2017	2	0%	19																
B2300	Ballast System Walk Down & Rectification - Barge	Mar-02-2017	Mar-06-2017	3	0%	4																
B2330	Slurry Valve Flushing Walk Down & Rectification - Barge	Mar-02-2017	Mar-06-2017	3	0%	23																
B2160	Sanitary / Grey Water (Plumbing Drainage) Clean & Flush - Barge	Mar-03-2017	Mar-07-2017	3	0%	19																
B2040	Exhaust Piping Clean - Barge	Mar-06-2017	Mar-07-2017	2	0%	3																
B2270	Exhaust Piping Walk Down & Rectification - Barge	Mar-08-2017	Mar-10-2017	3	0%	3																
B2390	Sanitary / Grey Water (Plumbing Drainage) Walk Down & Rectification - Barge	Mar-08-2017	Mar-10-2017	3	0%	19																
System Hookups - Barge		Sep-16-2016 A	May-19-2017	174		-20	May-19-2017, System Hookups - Barge															
B1140	Vosta DCMS Install - Barge	Sep-16-2016 A	Feb-13-2017	150	90%	-16																
B6060	Vosta DCMS Cable Termination - Barge	Sep-16-2016 A	Feb-15-2017	143	90%	-17																
B2990	Deck Drains, Scuppers System Install - Barge	Sep-16-2016 A	Feb-06-2017	7	90%	43																
B3010	AFT Capstan P/S Install - Barge	Sep-16-2016 A	Jan-20-2017 A	7	100%																	
B3020	Workshop Equipment Install - Barge	Sep-16-2016 A	Feb-08-2017	15	75%	40																
B3030	Watertight Sliding Doors Install - Barge	Sep-16-2016 A	Feb-01-2017 A	15	100%																	
B2800	Fwd Deck Crane Install - Barge	Oct-04-2016 A	Mar-15-2017	7	40%	15																
B2810	AFT Deck Crane Install - Barge	Oct-04-2016 A	Mar-15-2017	7	40%	15																
B1150	Vosta DCMS Cable Pull - Barge	Oct-12-2016 A	Feb-14-2017	30	90%	-17																
B3040	Engine Room Ventilation Install - Barge	Nov-01-2016 A	Feb-13-2017	21	80%	38																
B3050	Other Ventilation Install - Barge	Nov-01-2016 A	Feb-21-2017	15	20%	32																
B5520	Transformer T4 Cable Termination - Barge	Nov-04-2016 A	Feb-28-2017	4	40%	-12																
B5530	Transformer T5 Cable Termination - Barge	Nov-04-2016 A	Feb-28-2017	4	40%	-12																
B6070	Beier MAMS Cable Termination - Barge	Dec-01-2016 A	Feb-13-2017	65	75%	-12																
B1170	Beier PMS Cable Termination - Barge	Dec-01-2016 A	Feb-13-2017	65	75%	-6																
B1380	480V AC Auxiliary Power Panel P405 (MAIN DECK Port) Cable Termination - Barge	Dec-03-2016 A	Jan-20-2017 A	10	100%																	
B1390	480V AC Auxiliary Power Panel P406 (ECR) Cable Termination - Barge	Dec-03-2016 A	Jan-20-2017 A	10	100%																	
B1400	Hydraulic Pump 4 Drive Cable Termination - Barge	Dec-03-2016 A	Feb-13-2017	3	80%	-1																
B1360	MCC SECTION No.1 (480V) (ECR) Cable Termination - Barge	Dec-07-2016 A	Jan-20-2017 A	20	100%																	
B1370	MCC SECTION No.2 (480V) (ECR) Cable Termination - Barge	Dec-07-2016 A	Jan-20-2017 A	20	100%																	
B6140	Tween Deck Distribution Panel P214 (208/120 VAC) Cable Termination - Barge	Dec-08-2016 A	Feb-06-2017	10	90%	-11																
B1340	Multil-Drive PWM Converter (690V) (ECR) Cable Termination - Barge	Dec-10-2016 A	Feb-17-2017	20	80%	-5																
B1350	480V Main Switchboard (ECR) Cable Termination - Barge	Dec-10-2016 A	Feb-10-2017	20	75%	-31																
B5150	Fire Alarm System Cable Termination - Barge	Dec-21-2016 A	Feb-24-2017	45	65%	26																
B5500	Fire Alarm System Install - Barge	Jan-16-2017 A	Feb-21-2017	20	40%	28																
B1310	48V / 24 V MV & LV UPS Cable Termination - Barge	Jan-23-2017 A	Feb-10-2017	3	50%	-15																
B2970	ESD System Install - Barge	Jan-23-2017 A	Mar-13-2017	15	0%	15																
B3060	Air Conditioning System Install - Barge	Jan-23-2017 A	Feb-21-2017	10	25%	32																
B5430	Transformer T7 Install - Barge	Feb-06-2017	Mar-03-2017	20	0%	-38																
B1320	24V DC Panel Cable Termination - Barge	Feb-06-2017	Feb-17-2017	10	0%	8																
B1330	24V DC Generator Start Cable Termination - Barge	Feb-06-2017	Feb-07-2017	2	0%	33																





Activity ID	Activity Name	Start	Finish	Original Duration	Physical % Complete	Total Float	2017											
							Qtr 1			Qtr 2			Qtr 3			Qtr 4		
							Feb	Mar	Apr	May	Jun	Jul	Aug	Sep	Oct	Nov		
B1410	480 VAC Auxiliary Power Panel P407 (AFT Workshop) Cable Termination - Barge	Feb-06-2017	Feb-17-2017	10	0%	27	480 VAC Auxiliary Power Panel P407 (AFT Workshop) Cable Termination - Barge											
B6130	Engine Room Distribution Panel P211 (208/120 VAC) Cable Termination - Barge	Feb-06-2017	Feb-17-2017	10	0%	-10	Engine Room Distribution Panel P211 (208/120 VAC) Cable Termination - Barge											
B1440	Bow Thruster Room Distribution Panel P215 (208/120 VAC) Cable Termination - Barge	Feb-06-2017	Feb-17-2017	10	0%	23	Bow Thruster Room Distribution Panel P215 (208/120 VAC) Cable Termination - Barge											
B2780	Port Drag Arm Install - Barge	Feb-06-2017	Feb-15-2017	8	0%	14	Port Drag Arm Install - Barge											
B2790	Starboard Drag Arm Install - Barge	Feb-06-2017	Feb-15-2017	8	0%	14	Starboard Drag Arm Install - Barge											
B3000	Hauser Reels Install - Barge	Feb-06-2017	Feb-10-2017	5	0%	39	Hauser Reels Install - Barge											
B3070	Maintenance Equipment Install - Barge	Feb-06-2017	Feb-24-2017	15	0%	29	Maintenance Equipment Install - Barge											
B5290	6.6 KV Switchgear MVSB B1 Cable Termination - Barge	Feb-09-2017	Feb-28-2017	14	0%	36	6.6 KV Switchgear MVSB B1 Cable Termination - Barge											
B5350	6.6 KV Switchgear MVSB B2 Cable Termination - Barge	Feb-09-2017	Feb-28-2017	14	0%	36	6.6 KV Switchgear MVSB B2 Cable Termination - Barge											
B1450	HPU 1 Isolator Cable Termination - Barge	Feb-15-2017	Feb-16-2017	2	0%	46	HPU 1 Isolator Cable Termination - Barge											
B1460	HPU 2 Isolator Cable Termination - Barge	Feb-15-2017	Feb-16-2017	2	0%	46	HPU 2 Isolator Cable Termination - Barge											
B1470	HPU 3 Isolator Cable Termination - Barge	Feb-15-2017	Feb-16-2017	2	0%	46	HPU 3 Isolator Cable Termination - Barge											
B1480	HPU 4 Isolator Cable Termination - Barge	Feb-15-2017	Feb-16-2017	2	0%	-4	HPU 4 Isolator Cable Termination - Barge											
B1490	Ship's Service Generator ECM Cable Termination - Barge	Feb-15-2017	Feb-16-2017	2	0%	26	Ship's Service Generator ECM Cable Termination - Barge											
B6020	Install Deck Cranes - Barge	Feb-23-2017	Mar-14-2017	14	0%	17	Install Deck Cranes - Barge											
B5540	Transformer T7 Cable Termination - Barge	Mar-08-2017	Mar-13-2017	4	0%	-38	Transformer T7 Cable Termination - Barge											
B5720	Gland Seal Pumps 1, 2, 3, & 4 Couple Motor With Pump - Barge	Apr-13-2017	Apr-17-2017	2	0%	-8	Gland Seal Pumps 1, 2, 3, & 4 Couple Motor With Pump - Barge											
B5730	Starboard Trunnion: Davit, Winch; Wire on Drum - Barge	May-12-2017	May-15-2017	1	0%	-28	Starboard Trunnion: Davit, Winch; Wire on Drum - Barge											
B5740	Starboard Gimbal: Davit, Winch, Sheave Box; Wire on Drum - Barge	May-12-2017	May-15-2017	1	0%	-28	Starboard Gimbal: Davit, Winch, Sheave Box; Wire on Drum - Barge											
B5760	Port Trunnion: Davit, Winch; Wire on Drum - Barge	May-12-2017	May-15-2017	1	0%	-28	Port Trunnion: Davit, Winch; Wire on Drum - Barge											
B5770	Port Gimbal: Davit, Winch, Sheave Box; Wire on Drum - Barge	May-12-2017	May-15-2017	1	0%	-28	Port Gimbal: Davit, Winch, Sheave Box; Wire on Drum - Barge											
B5750	Starboard Draghead: Davit, Winch, Sheave Box Swell Comp; Wire on Drum - Barge	May-15-2017	May-16-2017	1	0%	-29	Starboard Draghead: Davit, Winch, Sheave Box Swell Comp; Wire on Drum - Barge											
B5780	Port Draghead: Davit, Winch, Sheave Box Swell Comp; Wire on Drum - Barge	May-15-2017	May-16-2017	1	0%	-29	Port Draghead: Davit, Winch, Sheave Box Swell Comp; Wire on Drum - Barge											
B5700	Bow Thruster 1 & 2 Couple Motor With Thruster - Barge	May-17-2017	May-18-2017	1	0%	-31	Bow Thruster 1 & 2 Couple Motor With Thruster - Barge											
B5880	Bow Thruster 1 & 2 Motors Coupled - Barge	May-18-2017	May-19-2017	1	0%	-31	Bow Thruster 1 & 2 Motors Coupled - Barge											
B5710	Jet Pump 1 & 2 Couple Motor with Pump - Barge	May-18-2017	May-19-2017	1	0%	-38	Jet Pump 1 & 2 Couple Motor with Pump - Barge											
Align Engines & Drive Motors - Barge		Feb-06-2017	Apr-14-2017	50		-6	Apr-14-2017, Align Engines & Drive Motors - Barge											
B3670	Bow Thruster Port & Starboard Align - Barge	Feb-06-2017	Feb-09-2017	4	0%	40	Bow Thruster Port & Starboard Align - Barge											
B2750	Dredge Pump Engine / Gear / Pump Align (Port) - Barge	Apr-06-2017	Apr-14-2017	6	0%	-17	Dredge Pump Engine / Gear / Pump Align (Port) - Barge											
B2760	Dredge Pump Engine / Gear / Pump Align (Starboard) - Barge	Apr-06-2017	Apr-14-2017	6	0%	-17	Dredge Pump Engine / Gear / Pump Align (Starboard) - Barge											
B2770	Jet Water Pumps Align - Barge	Apr-06-2017	Apr-12-2017	5	0%	-11	Jet Water Pumps Align - Barge											
B4010	Jet Pump / Motor / Gear Align (Port) - Barge	Apr-06-2017	Apr-13-2017	5	0%	-16	Jet Pump / Motor / Gear Align (Port) - Barge											
B4020	Jet Pump / Motor / Gear Align (Starboard) - Barge	Apr-06-2017	Apr-13-2017	5	0%	-16	Jet Pump / Motor / Gear Align (Starboard) - Barge											
System Startups - Barge		Sep-16-2016 A	Jun-29-2017	195		-35	Jun-29-2017, System Startups - Barge											
B5110	3 Ton Engine Bridge Crane (P) - Barge	Sep-16-2016 A	Feb-06-2017	3	90%	44	3 Ton Engine Bridge Crane (P) - Barge											
B5120	3 Ton Engine Bridge Crane (S) - Barge	Sep-16-2016 A	Feb-06-2017	3	90%	44	3 Ton Engine Bridge Crane (S) - Barge											
B5130	5 Ton Aft Stores Longitudinal Bridge Crane - Barge	Sep-16-2016 A	Feb-06-2017	10	90%	43	5 Ton Aft Stores Longitudinal Bridge Crane - Barge											
B5140	5 Ton Aft Stores Transverse Bridge Crane - Barge	Sep-16-2016 A	Feb-06-2017	10	90%	43	5 Ton Aft Stores Transverse Bridge Crane - Barge											
B3290	Dredge Pump Engine Checklist	Feb-06-2017	Feb-06-2017	1	0%	32	Dredge Pump Engine Checklist											

Remaining Level of Effort
 Critical Remaining Work
 Actual Level of Effort
 Milestone
 Actual Work
 Summary
 Remaining Work





Activity ID	Activity Name	Start	Finish	Original Duration	Physical % Complete	Total Float	2017															
							Qtr 1			Qtr 2			Qtr 3			Qtr 4						
							Feb	Mar	Apr	May	Jun	Jul	Aug	Sep	Oct	Nov						
B3300	Dredge Pump Gear Checklist	Feb-06-2017	Feb-06-2017	1	0%	32																
B3310	Dredge Pump Checklist	Feb-06-2017	Feb-06-2017	1	0%	41																
B3320	Jet Water Pump Checklist	Feb-06-2017	Feb-06-2017	1	0%	36																
B3330	Trunnion: Davit, Winch; Checklist - Port	Feb-06-2017	Feb-06-2017	1	0%	39																
B3340	Bow Connector & Winch; Check List - Barge	Feb-06-2017	Feb-06-2017	1	0%	43																
B3350	Gimbal: Davit, Winch, Sheave Box; Check List	Feb-06-2017	Feb-06-2017	1	0%	39																
B3360	Draghead: Davit, Winch, Sheave Box Swell Comp; Check list	Feb-06-2017	Feb-06-2017	1	0%	38																
B3370	Trunnion: Davit, Winch; Checklist - Starboard	Feb-06-2017	Feb-06-2017	1	0%	39																
B3380	Deck Crane Check List - Barge	Feb-06-2017	Feb-06-2017	1	0%	42																
B3390	Drag Arm Checklist - Barge	Feb-06-2017	Feb-06-2017	1	0%	43																
B3400	Vosta DCMS Check List	Feb-06-2017	Feb-08-2017	3	0%	3																
B3410	Bier MAMS Check List - Barge	Feb-06-2017	Feb-10-2017	5	0%	2																
B3420	Bier PMS Check List - Barge	Feb-06-2017	Feb-08-2017	3	0%	2																
B3430	Hydraulic Systems Bosch Rexroth (HPU, Winches) Checklist	Feb-06-2017	Feb-08-2017	3	0%	36																
B3440	Multi-Drive Checklist (HPU's & Jet Pumps)	Feb-06-2017	Feb-07-2017	2	0%	3																
B3480	Auxiliary Generator Check List - Barge	Feb-06-2017	Feb-08-2017	3	0%	38																
B3490	Bow Thruster Checklist - Barge	Feb-06-2017	Feb-06-2017	1	0%	43																
B3500	Bow Thruster Control Checklist - Barge	Feb-06-2017	Feb-06-2017	1	0%	43																
B3510	Multi-Drive Checklist (Bow Thrusters & Static Converter)	Feb-06-2017	Feb-08-2017	3	0%	41																
B3520	Anchor Windlass Checklist - Barge	Feb-06-2017	Feb-06-2017	1	0%	43																
B3530	AFT Capstan Checklist - Barge	Feb-06-2017	Feb-06-2017	1	0%	43																
B3540	AFT Stores Cranes Checklist - Barge	Feb-06-2017	Feb-06-2017	1	0%	44																
B3720	Lower Gear Box (AFT)	Feb-06-2017	Feb-07-2017	2	0%	42																
B3730	Lower Gear Box (FWD)	Feb-06-2017	Feb-07-2017	2	0%	42																
B3740	Oil Tank Cpl (P)	Feb-06-2017	Feb-07-2017	2	0%	42																
B3750	Oil Tank Cpl (S)	Feb-06-2017	Feb-07-2017	2	0%	42																
B3760	Transverse Bow Thruster (AFT)	Feb-06-2017	Feb-07-2017	2	0%	42																
B3770	Transverse Bow Thruster (FWD)	Feb-06-2017	Feb-07-2017	2	0%	42																
B3800	Filter, Regulator, Lubricator Unit Startup & Test	Feb-06-2017	Feb-07-2017	2	0%	24																
B3810	Moisture Separator	Feb-06-2017	Feb-08-2017	3	0%	23																
B3840	Service Air Receiver	Feb-06-2017	Feb-07-2017	2	0%	22																
B3870	Starting Air Receiver # 1	Feb-06-2017	Feb-07-2017	2	0%	22																
B3880	Starting Air Receiver # 2	Feb-06-2017	Feb-07-2017	2	0%	24																
B3990	Dredge Pump Well Eductor (Port)	Feb-06-2017	Feb-06-2017	1	0%	36																
B4000	Dredge Pump Well Eductor (Starboard)	Feb-06-2017	Feb-06-2017	1	0%	36																
B4030	Sump Eductor Jetwater (Port)	Feb-06-2017	Feb-06-2017	1	0%	36																
B4040	Sump Eductor Jetwater (Starboard)	Feb-06-2017	Feb-06-2017	1	0%	36																
B4570	Emergency Tank No. 1	Feb-06-2017	Feb-06-2017	1	0%	42																
B4580	Emergency Tank No. 2	Feb-06-2017	Feb-06-2017	1	0%	42																





Activity ID	Activity Name	Start	Finish	Original Duration	Physical % Complete	Total Float	2017															
							Qtr 1		Qtr 2			Qtr 3		Qtr 4								
							Feb	Mar	Apr	May	Jun	Jul	Aug	Sep	Oct	Nov						
B4590	Emergency Tank No. 3	Feb-06-2017	Feb-06-2017	1	0%	42																
B4600	Emergency Tank No. 4 Install	Feb-06-2017	Feb-06-2017	1	0%	42																
B4610	Emergency Tank No. 5	Feb-06-2017	Feb-06-2017	1	0%	42																
B4620	Emergency Tank No. 6	Feb-06-2017	Feb-06-2017	1	0%	42																
B4630	WT Door Control Panel # 1	Feb-06-2017	Feb-06-2017	1	0%	42																
B4640	WT Door Control Panel # 2	Feb-06-2017	Feb-06-2017	1	0%	42																
B4650	WT Door Control Panel # 3	Feb-06-2017	Feb-06-2017	1	0%	42																
B4660	WT Door Control Panel # 4	Feb-06-2017	Feb-06-2017	1	0%	42																
B4670	WT Door Control Panel # 5	Feb-06-2017	Feb-06-2017	1	0%	42																
B4680	WT Door Control Panel # 6	Feb-06-2017	Feb-06-2017	1	0%	42																
B4700	T4 Transformer Standing Heater	Feb-06-2017	Feb-06-2017	1	0%	63																
B4710	T5 Transformer Standing Heater	Feb-06-2017	Feb-06-2017	1	0%	63																
B4720	T6 Transformer Standing Heater	Feb-06-2017	Feb-06-2017	1	0%	63																
B5000	Fan Coil Unit FC-1, Main Deck Startup & Test	Feb-06-2017	Feb-06-2017	1	0%	43																
B5010	Fan Coil Unit FC-2, Main Deck	Feb-06-2017	Feb-06-2017	1	0%	43																
B5080	Exhaust Fan EF-1, ECR Startup Tests	Feb-06-2017	Feb-06-2017	1	0%	43																
B5090	Exhaust Fan EF-2, HEADS	Feb-06-2017	Feb-06-2017	1	0%	43																
B5100	Supply Fan SF-1, ECR	Feb-06-2017	Feb-06-2017	1	0%	43																
B3150	Deck Drains, Scuppers System - Barge	Feb-06-2017	Feb-08-2017	2	0%	43																
MST28	Finish Milestone: Maintenance Equipment Components		Feb-06-2017	0	0%	43																
B3890	Pressure Switch(es) Test	Feb-08-2017	Feb-09-2017	2	0%	22																
B5180	Beier MAMS System Component Check - Barge	Feb-14-2017	Feb-21-2017	6	0%	-12																
B6010	Move to Nelson Street - Barge	Feb-16-2017	Feb-22-2017	5	0%	14																
B2710	Emergency Closing Valves Operational Test	Feb-16-2017	Feb-17-2017	2	0%	36																
B2520	Combustion Air Operational Test - Barge	Feb-17-2017	Feb-20-2017	2	0%	35																
B1730	Ships Service Generator System Component Check	Feb-17-2017	Feb-20-2017	2	0%	26																
B5580	Transformer T6 System Component Check	Feb-21-2017	Feb-22-2017	2	0%	12																
B5190	Beier PMS System Component Check - Barge	Feb-22-2017	Feb-28-2017	5	0%	-12																
B2560	Fills, Vents, Sounds Operational test	Feb-27-2017	Feb-28-2017	2	0%	29																
B3250	Maintenance Equipment Operational Test	Feb-27-2017	Feb-28-2017	2	0%	29																
B3280	Maintenance Equipment Load Test	Mar-01-2017	Mar-03-2017	3	0%	47																
B1520	Multi-Drive PWM Converter (690V) (ECR) System Component Check	Mar-01-2017	Mar-10-2017	8	0%	-12																
B5170	Vosta DCMS System Component Check	Mar-01-2017	Mar-22-2017	16	0%	-27																
B5230	HPU 4 Drive System Component Check	Mar-01-2017	Mar-06-2017	4	0%	-12																
B5300	6.6 KV Switchgear MVSB B1 System Component Check - Barge	Mar-01-2017	Mar-01-2017	1	0%	36																
B5550	6.6 KV Switchgear MVSB B2 System Component Check - Barge	Mar-01-2017	Mar-01-2017	1	0%	36																
B5560	Transformer T4 System Component Check	Mar-01-2017	Mar-01-2017	1	0%	38																
B5570	Transformer T5 System Component Check	Mar-01-2017	Mar-01-2017	1	0%	38																
B5410	480V Main Switchboard (ECR) Shore Power Start & Test Basic Components - Barge	Mar-01-2017	Mar-02-2017	2	0%	-31																

Remaining Level of Effort
 Critical Remaining Work
 Actual Level of Effort
 Milestone
 Actual Work
 Summary
 Remaining Work





Activity ID	Activity Name	Start	Finish	Original Duration	Physical % Complete	Total Float	2017															
							Qtr 1			Qtr 2			Qtr 3			Qtr 4						
							Feb	Mar	Apr	May	Jun	Jul	Aug	Sep	Oct	Nov						
B5440	Transformer T7 System Component Check	Mar-14-2017	Mar-15-2017	2	0%	-38																
B5420	480V Main Switchboard (ECR) Shore Power System Individual Component Test - Bar	Mar-15-2017	Mar-20-2017	3	0%	-38																
B1700	Fwd Deck Crane Soft Start Test	Mar-20-2017	Mar-22-2017	2	0%	8																
B1710	AFT Deck Crane Soft Start Test - Barge	Mar-20-2017	Mar-22-2017	2	0%	8																
B5790	Transformer T7 Test	Mar-20-2017	Mar-22-2017	2	0%	-38																
B3110	Anchor Windlass Port - Barge	Mar-20-2017	Mar-22-2017	2	0%	14																
B3120	Anchor Windlass Starboard - Barge	Mar-20-2017	Mar-22-2017	2	0%	14																
B2730	Deck Crane Hydraulic Piping Operational Test - Barge	Mar-22-2017	Mar-27-2017	3	0%	8																
B5250	HPU 4 System Component Check	Mar-22-2017	Mar-23-2017	1	0%	-21																
B5590	HPU 1, 2 & 3 System Component Check	Mar-22-2017	Mar-24-2017	2	0%	23																
B5610	6.6 KV Switchgear MVSB B1 Start & Test Basic Components - Barge	Mar-23-2017	Mar-27-2017	2	0%	21																
B5360	6.6 KV Switchgear MVSB B2 Start & Test Basic Components - Barge	Mar-23-2017	Mar-27-2017	2	0%	21																
B3230	AFT Stores Crane # 1 Operational Test - Barge	Mar-27-2017	Mar-28-2017	1	0%	10																
B3240	AFT Stores Crane # 2 Operational Test - Barge	Mar-27-2017	Mar-28-2017	1	0%	10																
B3590	Bilge Pump (Engine Room) - Barge	Mar-27-2017	Mar-29-2017	2	0%	6																
B3640	Sludge Transfer Pump	Mar-27-2017	Mar-28-2017	1	0%	7																
B3780	Bow Thruster Supply Fan - Barge	Mar-27-2017	Mar-28-2017	1	0%	8																
B3830	Service Air Compressor	Mar-27-2017	Mar-29-2017	2	0%	-12																
B3850	Starting Air Compressor # 1	Mar-27-2017	Mar-29-2017	2	0%	-12																
B3900	Auxiliary Fresh Water Cooling Pump - Barge	Mar-27-2017	Mar-29-2017	2	0%	-28																
B3910	Auxiliary Salt Water Cooling Pump 1 - Barge	Mar-27-2017	Mar-28-2017	1	0%	-27																
B3970	Sea Water Engine Cooling Pump (P)	Mar-27-2017	Mar-29-2017	2	0%	-30																
B4070	Fuel Oil Transfer Pump 1	Mar-27-2017	Mar-29-2017	2	0%	-12																
B4080	Fuel Oil Transfer Pump 2	Mar-27-2017	Mar-29-2017	2	0%	-12																
B3550	Fire / Washdown / Ballast Pump 1	Mar-27-2017	Mar-29-2017	2	0%	-16																
B4280	Drag Arm Visor Hydraulic Power Unit - Port - Barge	Mar-27-2017	Mar-29-2017	2	0%	6																
B4170	MSD / Transformer	Mar-27-2017	Mar-30-2017	3	0%	6																
B4230	Emergency Hydraulic Pump P5	Mar-27-2017	Mar-29-2017	2	0%	32																
B4240	Hydraulic Oil Transfer Motor Pump P-10	Mar-27-2017	Mar-29-2017	2	0%	32																
B4510	Watertight Sliding Door # 1	Mar-27-2017	Mar-28-2017	1	0%	7																
B4520	Watertight Sliding Door # 2	Mar-27-2017	Mar-28-2017	1	0%	7																
B4530	Watertight Sliding Door # 3	Mar-27-2017	Mar-28-2017	1	0%	7																
B4540	Watertight Sliding Door # 4	Mar-27-2017	Mar-28-2017	1	0%	7																
B4550	Watertight Sliding Door # 5	Mar-27-2017	Mar-28-2017	1	0%	7																
B4560	Watertight Sliding Door #6	Mar-27-2017	Mar-28-2017	1	0%	7																
B4690	Transformer T6 Pre-magnetizing unit (PMU)	Mar-27-2017	Mar-28-2017	1	0%	-9																
B4730	T4 Transformer Cooling Fans	Mar-27-2017	Mar-28-2017	1	0%	28																
B4740	T5 Transformer cooling Fans	Mar-27-2017	Mar-28-2017	1	0%	28																
B4750	T6 Transformer Cooling Fans	Mar-27-2017	Mar-28-2017	1	0%	28																

Remaining Level of Effort Critical Remaining Work
 Actual Level of Effort Milestone
 Actual Work Summary
 Remaining Work





Activity ID	Activity Name	Start	Finish	Original Duration	Physical % Complete	Total Float	2017															
							Qtr 1		Qtr 2			Qtr 3			Qtr 4							
							Feb	Mar	Apr	May	Jun	Jul	Aug	Sep	Oct	Nov						
B4760	Vent Supply Fan # 1, Engine Room - Port	Mar-27-2017	Mar-28-2017	1	0%	8			█													
B4770	Vent Supply Fan # 2, Engine Room - Port	Mar-27-2017	Mar-28-2017	1	0%	8			█													
B4780	Vent Supply Fan # 3, Engine Room - Port	Mar-27-2017	Mar-28-2017	1	0%	8			█													
B4790	Vent Supply Fan # 1, Engine Room Starboard	Mar-27-2017	Mar-28-2017	1	0%	8			█													
B4800	Vent Supply Fan # 2, Engine Room Starboard	Mar-27-2017	Mar-28-2017	1	0%	8			█													
B4810	Vent Supply Fan # 3, Engine Room Starboard	Mar-27-2017	Mar-28-2017	1	0%	8			█													
B4820	Stack Exhaust Fan # 1, Port	Mar-27-2017	Mar-28-2017	1	0%	8			█													
B4830	Stack Exhaust Fan # 2, Port	Mar-27-2017	Mar-28-2017	1	0%	8			█													
B4840	Stack Exhaust Fan # 1, Starboard	Mar-27-2017	Mar-28-2017	1	0%	8			█													
B4850	Stack Exhaust Fan # 2, Starboard	Mar-27-2017	Mar-30-2017	3	0%	6			█													
B4860	Hydraulic Room SUPPLY FAN # 1, Port	Mar-27-2017	Mar-28-2017	1	0%	-18			█													
B4870	Hydraulic Room SUPPLY FAN # 2, Port	Mar-27-2017	Mar-28-2017	1	0%	-18			█													
B4880	Hydraulic Room Exhaust Fan # 1, Starboard	Mar-27-2017	Mar-28-2017	1	0%	-18			█													
B4890	Hydraulic Room Exhaust Fan # 2, Starboard	Mar-27-2017	Mar-28-2017	1	0%	-18			█													
B4470	Automatic Hacksaw - Barge	Mar-27-2017	Mar-28-2017	1	0%	7			█													
B4480	Welding Machine	Mar-27-2017	Mar-28-2017	1	0%	7			█													
B4980	Air Condensing Unit, CU-2 - Barge	Mar-27-2017	Mar-29-2017	2	0%	7			█													
B4990	Air Condensing Unit, CU-1 - Barge	Mar-27-2017	Mar-29-2017	2	0%	7			█													
B5020	Duct Heater, DH-1	Mar-27-2017	Mar-28-2017	1	0%	8			█													
B5030	Air Handler, Main Deck - Barge	Mar-27-2017	Apr-05-2017	7	0%	2			█													
B5040	CO2 Room Ventilation Fan - Barge	Mar-27-2017	Mar-28-2017	1	0%	8			█													
B5050	Paint Locker Ventilation Fan	Mar-27-2017	Mar-28-2017	1	0%	8			█													
B5060	AFT Storage Space Vent Supply Fan - Barge	Mar-27-2017	Mar-28-2017	1	0%	8			█													
B5070	Workshop Supply Fan	Mar-27-2017	Mar-28-2017	1	0%	8			█													
B4900	Hot Water Heater Startup & Test	Mar-27-2017	Mar-29-2017	2	0%	7			█													
B4940	Potable Water Pressure Pump	Mar-27-2017	Mar-28-2017	1	0%	8			█													
B4320	Dredge Pump Port Impeller Device	Mar-27-2017	Mar-29-2017	2	0%	7			█													
B4360	Port Dredge Engine JW Heater	Mar-27-2017	Mar-28-2017	1	0%	8			█													
B4370	Port Dredge Engine Circulation Lube Oil Pump	Mar-27-2017	Mar-29-2017	2	0%	7			█													
B4380	Port Dredge Engine Turbo Post-Lube Oil Pump	Mar-27-2017	Mar-28-2017	1	0%	8			█													
B4390	Starboard Dredge Engine JW Heater	Mar-27-2017	Mar-29-2017	2	0%	7			█													
B4400	Starboard Dredge Engine Circulation Lube Oil Pump	Mar-27-2017	Mar-29-2017	2	0%	7			█													
B4410	Starboard Dredge Engine Turbo Post-Lube Oil Pump	Mar-27-2017	Mar-29-2017	2	0%	7			█													
B3170	AFT Capstan P/S Startup & Test - Barge	Mar-28-2017	Mar-30-2017	2	0%	8			█													
B3190	Watertight Sliding Doors Startup & Test	Mar-28-2017	Mar-31-2017	3	0%	7			█													
B3210	Other Ventilation Operational Test	Mar-28-2017	Mar-30-2017	2	0%	8			█													
B3860	Starting Air Compressor # 2	Mar-28-2017	Mar-30-2017	2	0%	-13			█													
B3920	Auxiliary Salt Water Cooling Pump 2 - Barge	Mar-28-2017	Mar-29-2017	1	0%	-28			█													
B3980	Sea Water Engine Cooling Pump (S)	Mar-28-2017	Mar-30-2017	2	0%	-31			█													





Activity ID	Activity Name	Start	Finish	Original Duration	Physical % Complete	Total Float	2017															
							Qtr 1			Qtr 2			Qtr 3			Qtr 4						
							Feb	Mar	Apr	May	Jun	Jul	Aug	Sep	Oct	Nov						
B4050	Slurry (Sea) Valve Flushing Pump	Mar-28-2017	Mar-30-2017	2	0%	6																
B3560	Fire / Washdown / Ballast Pump 2	Mar-28-2017	Mar-30-2017	2	0%	-17																
B4290	Drag Arm Visor Hydraulic Power Unit - Starboard - Barge	Mar-28-2017	Mar-30-2017	2	0%	5																
B4160	Grey Water Discharge Pump Startup & Test	Mar-28-2017	Mar-31-2017	3	0%	5																
MST24	Finish Milestone: Watertight Sliding Doors Components		Mar-28-2017	0	0%	7																
MST04	Finish Milestone: 6.6 KV System Components		Mar-28-2017	0	0%	28																
MST19	Finish Milestone: Hydraulic Room Ventilation Components		Mar-28-2017	0	0%	-18																
MST26	Finish Milestone: Other Ventilation System Components		Mar-28-2017	0	0%	8																
B4330	Dredge Pump Starboard Impeller Device	Mar-28-2017	Mar-30-2017	2	0%	6																
MST15	Finish Milestone: Auxiliary Cooling System Components		Mar-29-2017	0	0%	-28																
B2550	Fire / Washdown System Operational Test	Mar-30-2017	Apr-03-2017	2	0%	-16																
B2570	Slurry Valve Flushing Operational Test	Mar-30-2017	Apr-03-2017	2	0%	6																
B3200	Engine Room Ventilation Operational Test	Mar-30-2017	Apr-03-2017	2	0%	6																
B3570	Ballast Water Treatment System - Barge	Mar-30-2017	Apr-04-2017	3	0%	-17																
MST17	Finish Milestone: Seawater Cooling Components		Mar-30-2017	0	0%	-31																
MST07	Finish Milestone: Slurry Valve Flushing System Components		Mar-30-2017	0	0%	6																
MST20	Finish Milestone: Draghead Visor Hydraulic Piping System Components		Mar-30-2017	0	0%	5																
MST25	Finish Milestone: Engine Room Ventilation Components		Mar-30-2017	0	0%	6																
B2630	Sanitary / Grey Water (Plumbing Drainage) Operational Test	Mar-31-2017	Apr-04-2017	2	0%	5																
MST12	Finish Milestone: Sanitary / Grey Water System Components		Mar-31-2017	0	0%	5																
B2540	Ballast System Operational Test - Barge	Apr-04-2017	Apr-06-2017	2	0%	-17																
MST06	Finish Milestone: Ballast System Components		Apr-04-2017	0	0%	-17																
B5160	Fire Alarm System Test	Apr-05-2017	Apr-12-2017	5	0%	-2																
B2950	Fwd Deck Crane Operational Test	Apr-05-2017	Apr-10-2017	3	0%	1																
B2960	AFT Deck Crane Operational Test - Barge	Apr-05-2017	Apr-10-2017	3	0%	1																
B3100	ESD System Operational Tests	Apr-05-2017	Apr-10-2017	3	0%	-2																
B3220	Air Conditioning System Operational Test - Barge	Apr-05-2017	Apr-07-2017	2	0%	2																
B3820	Refrigerated Air Dryer	Apr-05-2017	Apr-07-2017	2	0%	-19																
B4090	Fuel Oil Purifier	Apr-05-2017	Apr-10-2017	3	0%	-20																
B4490	15" Drill Press - Barge	Apr-05-2017	Apr-06-2017	1	0%	-1																
B4500	12" Bench Grinder - Barge	Apr-05-2017	Apr-06-2017	1	0%	-1																
B4970	Generator Jacket Water Heater	Apr-05-2017	Apr-06-2017	1	0%	-7																
MST27	Finish Milestone: Air Conditioning System Components		Apr-05-2017	0	0%	2																
B4910	UV Water Purifier	Apr-05-2017	Apr-07-2017	2	0%	-1																
B4920	Drinking Fountain, Engine Room	Apr-05-2017	Apr-06-2017	1	0%	1																
B4930	Drinking Fountain, ECR	Apr-05-2017	Apr-06-2017	1	0%	1																
B4950	Drinking Fountain, Pump Room	Apr-05-2017	Apr-06-2017	1	0%	1																
B5200	Vosta DCMS Start & Test Basic Components	Apr-05-2017	Apr-11-2017	4	0%	-37																
B5210	Beier MAMS Start & Test Basic Components - Barge	Apr-05-2017	Apr-06-2017	1	0%	-36																

Remaining Level of Effort
 Critical Remaining Work
 Actual Level of Effort
 Milestone
 Actual Work
 Summary
 Remaining Work





Activity ID	Activity Name	Start	Finish	Original Duration	Physical % Complete	Total Float	2017												
							Qtr 1		Qtr 2			Qtr 3		Qtr 4					
							Feb	Mar	Apr	May	Jun	Jul	Aug	Sep	Oct	Nov			
B5220	Beier PMS Start & Test Basic Components - Barge	Apr-05-2017	Apr-10-2017	3	0%	-38			■	Beier PMS Start & Test Basic Components - Barge									
B5240	HPU 4 Drive Start & Test Basic Components	Apr-05-2017	Apr-06-2017	1	0%	-34			■	HPU 4 Drive Start & Test Basic Components									
B3580	Bilge Monitor / Alarm - Barge	Apr-06-2017	Apr-13-2017	5	0%	-6			■	Bilge Monitor / Alarm - Barge									
B3630	Oily Water Separator	Apr-06-2017	Apr-10-2017	2	0%	-3			■	Oily Water Separator									
B3680	Leacon Switch Box (P)	Apr-06-2017	Apr-07-2017	1	0%	-1			■	Leacon Switch Box (P)									
B3690	Leacon Switch Box (S)	Apr-06-2017	Apr-07-2017	1	0%	-1			■	Leacon Switch Box (S)									
B3700	Leacon Tank (P)	Apr-06-2017	Apr-10-2017	2	0%	-2			■	Leacon Tank (P)									
B3710	Leacon Tank (S)	Apr-06-2017	Apr-10-2017	2	0%	-2			■	Leacon Tank (S)									
B2610	Potable Water Operational Test	Apr-07-2017	Apr-11-2017	2	0%	-1			■	Potable Water Operational Test									
B2620	Compressed Air Operational Test - Barge	Apr-07-2017	Apr-11-2017	2	0%	-19			■	Compressed Air Operational Test - Barge									
MST11	Finish Milestone: Compressed Air System Components		Apr-07-2017	0	0%	-19			◆	Finish Milestone: Compressed Air System Components									
MST10	Finish Milestone: Potable Water System Components		Apr-07-2017	0	0%	-1			◆	Finish Milestone: Potable Water System Components									
B2690	Sea Water Cooling Operational Test	Apr-10-2017	Apr-12-2017	2	0%	-38			■	Sea Water Cooling Operational Test									
B3790	Beier Bow Thruster Control System - Barge	Apr-10-2017	Apr-12-2017	2	0%	-10			■	Beier Bow Thruster Control System - Barge									
B4060	Fuel Meters / Transmitters	Apr-10-2017	Apr-17-2017	5	0%	-25			■	Fuel Meters / Transmitters									
B4130	Supply Meter	Apr-10-2017	Apr-12-2017	2	0%	-2			■	Supply Meter									
B4140	Return Meter	Apr-10-2017	Apr-12-2017	2	0%	-2			■	Return Meter									
B4150	Flow / Density Transmitter	Apr-10-2017	Apr-12-2017	2	0%	-2			■	Flow / Density Transmitter									
B4460	Workshop Lathe	Apr-10-2017	Apr-11-2017	1	0%	-4			■	Workshop Lathe									
B4960	Cooling Fan & Motor - Barge	Apr-10-2017	Apr-11-2017	1	0%	-10			■	Cooling Fan & Motor - Barge									
B5600	Ship's Service Generator Engine Component Check	Apr-10-2017	Apr-12-2017	2	0%	-11			■	Ship's Service Generator Engine Component Check									
B1720	Gland Seal Pump VFD 1, 2, 3 & 4 Test	Apr-11-2017	Apr-13-2017	2	0%	-8			■	Gland Seal Pump VFD 1, 2, 3 & 4 Test									
B2740	Draghead Visor Hydraulic Piping Operational Test	Apr-11-2017	Apr-14-2017	3	0%	-4			■	Draghead Visor Hydraulic Piping Operational Test									
B3160	Hauser Reels Test	Apr-11-2017	Apr-13-2017	2	0%	-3			■	Hauser Reels Test									
B3180	Workshop Equipment Operational Test	Apr-11-2017	Apr-14-2017	3	0%	-4			■	Workshop Equipment Operational Test									
B3600	Bilge Pump (Chain Locker) - Barge	Apr-11-2017	Apr-13-2017	2	0%	-6			■	Bilge Pump (Chain Locker) - Barge									
B3610	Bilge Pump (Portable) - Barge	Apr-11-2017	Apr-13-2017	2	0%	-6			■	Bilge Pump (Portable) - Barge									
B3620	Bilge Pump (Pump Room) - Barge	Apr-11-2017	Apr-13-2017	2	0%	-6			■	Bilge Pump (Pump Room) - Barge									
B4220	Pressurization Hydraulic Pump P-6	Apr-11-2017	Apr-12-2017	1	0%	-34			■	Pressurization Hydraulic Pump P-6									
B4250	Filter Cooler Hydraulic Loop Pump # 1 Startup & Test	Apr-11-2017	Apr-12-2017	1	0%	-34			■	Filter Cooler Hydraulic Loop Pump # 1 Startup & Test									
B4260	Pressurization Hydraulic Pump P-7	Apr-11-2017	Apr-13-2017	2	0%	-35			■	Pressurization Hydraulic Pump P-7									
B4270	Filter Cooler Hydraulic Loop Pump # 2 Startup & Test	Apr-11-2017	Apr-12-2017	1	0%	-34			■	Filter Cooler Hydraulic Loop Pump # 2 Startup & Test									
B4100	Dirty Lube Oil Transfer Pump - Barge	Apr-11-2017	Apr-13-2017	2	0%	-18			■	Dirty Lube Oil Transfer Pump - Barge									
B4110	Lube Oil Transfer Pump 1	Apr-11-2017	Apr-13-2017	2	0%	-18			■	Lube Oil Transfer Pump 1									
B4120	Lube Oil Transfer Pump 2	Apr-11-2017	Apr-13-2017	2	0%	-18			■	Lube Oil Transfer Pump 2									
MST23	Finish Milestone: Work Shop Equipment Components		Apr-11-2017	0	0%	-4			◆	Finish Milestone: Work Shop Equipment Components									
B1580	HPU 4 Drive Test	Apr-11-2017	Apr-14-2017	3	0%	-37			■	HPU 4 Drive Test									
B5940	Flushing Water Pumps	Apr-11-2017	Apr-12-2017	1	0%	-4			■	Flushing Water Pumps									
B4450	Dredge Pump Engine ECM	Apr-11-2017	Apr-13-2017	2	0%	-21			■	Dredge Pump Engine ECM									

Remaining Level of Effort
 Critical Remaining Work
 Actual Level of Effort
 Milestone
 Actual Work
 Summary
 Remaining Work





Activity ID	Activity Name	Start	Finish	Original Duration	Physical % Complete	Total Float	2017															
							Qtr 1		Qtr 2			Qtr 3			Qtr 4							
							Feb	Mar	Apr	May	Jun	Jul	Aug	Sep	Oct	Nov						
B5490	Draft Sensors - Barge	Apr-11-2017	Apr-14-2017	3	0%	20				■												
B5980	Hopper Level Sensors Test	Apr-11-2017	Apr-14-2017	3	0%	20				■												
B2670	Auxiliary Cooling Operational Test - Barge	Apr-12-2017	Apr-17-2017	3	0%	-38				■												
MST22	Finish Milestone: Fuel Oil Service System Components		Apr-12-2017	0	0%	-2				◆												
B2590	Lube Oil Operational Test	Apr-13-2017	Apr-17-2017	2	0%	-18				■												
B2600	Dirty / Waste Oil Operational Test - Barge	Apr-13-2017	Apr-17-2017	2	0%	-5				■												
MST09	Finish Milestone: Lube Oil System Components		Apr-13-2017	0	0%	-18				◆												
B5270	HPU 4 Couple Motor With Pump	Apr-14-2017	Apr-17-2017	1	0%	-37				■												
B2580	Fuel Oil Transfer Operational Test	Apr-17-2017	Apr-19-2017	2	0%	-7				■												
B2660	Fuel Oil Service Operational Test	Apr-17-2017	Apr-19-2017	2	0%	-25				■												
B5900	Jet Pump Gearbox Test	Apr-17-2017	Apr-21-2017	4	0%	-18				■												
MST08	Finish Milestone: Fuel Oil Transfer System Components		Apr-17-2017	0	0%	-25				◆												
B3930	Gland Seal Pump 1 Startup & Test	Apr-17-2017	Apr-18-2017	1	0%	-8				■												
B3940	Gland Seal Pump 2 Startup & Test	Apr-17-2017	Apr-18-2017	1	0%	-8				■												
B3950	Gland Seal Pump 3 (Standby Pump)	Apr-17-2017	Apr-18-2017	1	0%	-8				■												
B3960	Gland Seal Pump 4	Apr-17-2017	Apr-18-2017	1	0%	-8				■												
B5260	HPU 4 Start & Test Basic Components	Apr-17-2017	Apr-18-2017	1	0%	-37				■												
B5400	Multi-Drive Control Start & Test Basic Components	Apr-17-2017	May-03-2017	12	0%	-38				■												
B4340	Starboard Dredge Gearbox	Apr-17-2017	Apr-18-2017	1	0%	-9				■												
B4350	Port Dredge Gearbox	Apr-17-2017	Apr-18-2017	1	0%	-9				■												
B4440	Cooling System Flow Balance - Barge	Apr-17-2017	Apr-24-2017	5	0%	-23				■												
B4210	Hydraulic Pump P4	Apr-18-2017	Apr-24-2017	4	0%	-37				■												
B5630	Ship's Service Generator Engine Start & Test Basic Components	Apr-19-2017	Apr-25-2017	4	0%	-16				■												
B4420	Dredge Pump Engine Startup Basic Components (Port)	Apr-19-2017	Apr-26-2017	5	0%	-25				■												
B4430	Dredge Pump Engine Startup Basic Components (Starboard)	Apr-19-2017	Apr-26-2017	5	0%	-25				■												
B2720	Main Hydraulic Piping (Valve Stand) Operational Test	Apr-24-2017	May-10-2017	12	0%	-37				■												
B2510	Exhaust Piping Operational Test	Apr-25-2017	Apr-27-2017	2	0%	-15				■												
B2680	Generator Cooling System Operational Test	Apr-25-2017	Apr-27-2017	2	0%	-13				■												
B3140	Ships' Service Generator Operational Test	Apr-25-2017	Apr-28-2017	3	0%	-16				■												
B4300	Dredge Pump Engine Startup (Port)	Apr-26-2017	May-10-2017	10	0%	-25				■												
B4310	Dredge Pump Engine Startup (Starboard)	Apr-26-2017	May-10-2017	10	0%	-25				■												
MST29	Finish Milestone: Dredge Pump Engine Components		Apr-26-2017	0	0%	-25				◆												
B5370	Transformer T4 Start & Test Basic Components	May-03-2017	May-05-2017	2	0%	-7				■												
B5380	Transformer T5 Start & Test Basic Components	May-03-2017	May-05-2017	2	0%	-7				■												
B5390	Transformer T6 Start & Test Basic Components	May-03-2017	May-08-2017	3	0%	-38				■												
B5450	Multi-Drive SC2 (MSB => SC2) Individual Component Test	May-08-2017	May-11-2017	3	0%	-38				■												
B2940	Bow Connector and Winch; Operational Test - Barge	May-10-2017	May-12-2017	2	0%	-24				■												
B5890	Jet Valves Test	May-10-2017	May-18-2017	6	0%	-37				■												
B5910	Gland Water Valves	May-10-2017	May-11-2017	1	0%	-25				■												

Remaining Level of Effort
 Critical Remaining Work
 Actual Level of Effort
 Milestone
 Actual Work
 Summary
 Remaining Work





Activity ID	Activity Name	Start	Finish	Original Duration	Physical % Complete	Total Float	2017															
							Qtr 1			Qtr 2			Qtr 3			Qtr 4						
							Feb	Mar	Apr	May	Jun	Jul	Aug	Sep	Oct	Nov						
B2860	Starboard Trunnion: Davit, Winch; Component Test	May-10-2017	May-12-2017	2	0%	-28																
B2870	Starboard Gimbal: Davit, Winch, Sheave Box; Component Test	May-10-2017	May-12-2017	2	0%	-28																
B2880	Starboard Draghead: Davit, Winch, Sheave Box Swell Comp; Component Test	May-10-2017	May-15-2017	3	0%	-29																
B2900	Port Trunnion: Davit, Winch; Component Test	May-10-2017	May-12-2017	2	0%	-28																
B2910	Port Gimbal: Davit, Winch, Sheave Box; Component Test	May-10-2017	May-12-2017	2	0%	-28																
B2920	Port Draghead: Davit, Winch, Sheave Box Swell Comp; Component Test	May-10-2017	May-15-2017	3	0%	-29																
B5920	Starboard Dredge Clutch	May-10-2017	May-11-2017	1	0%	-25																
B5930	Port Dredge Clutch	May-10-2017	May-11-2017	1	0%	-25																
B5950	Dredge Valves	May-10-2017	May-18-2017	6	0%	-30																
B2700	Gland Seal Operational Test	May-11-2017	May-15-2017	2	0%	-25																
MST18	Finish Milestone: Gland Seal System Components		May-11-2017	0	0%	-25																
B5470	Multi-Drive HPU1 HPU2 & HPU3 Drive Test	May-11-2017	May-19-2017	6	0%	-18																
B5640	Multi-Drive Bow Thruster 1 & 2 Drive Test	May-11-2017	May-17-2017	4	0%	-31																
B5650	Multi-Drive Jet Pump 1 & 2 Drive Test	May-11-2017	May-18-2017	5	0%	-38																
B2890	Starboard Drag Arm Operational Test	May-17-2017	May-19-2017	2	0%	-29																
B2930	Port Drag Arm Operational Test	May-17-2017	May-19-2017	2	0%	-29																
B2820	Dredge Pump Engine / Gear / Pump Port Operational Test	May-18-2017	May-22-2017	2	0%	-30																
B2830	Dredge Pump Engine / Gear / Pump Starboard Operational Test	May-18-2017	May-22-2017	2	0%	-30																
MST13	Finish Milestone: Dredge Load & Unload System Components		May-18-2017	0	0%	-30																
B2840	Jet Water Pump Port Operational Test	May-19-2017	May-24-2017	3	0%	-38																
B2850	Jet Water Pump Starboard Operational Test	May-19-2017	May-24-2017	3	0%	-38																
MST21	Finish Milestone: Bow Thruster System Components - Barge		May-19-2017	0	0%	-31																
MST14	Finish Milestone: Jetwater System Components		May-19-2017	0	0%	-38																
B5690	HPU 1, 2 & 3 Couple Motor With Pump	May-19-2017	May-22-2017	1	0%	-18																
B5990	Pipe Angle Sensors	May-19-2017	May-24-2017	3	0%	-9																
B2640	Dredge Load & Unload System Operational Test	May-22-2017	May-24-2017	2	0%	-9																
B5620	HPU 1, 2 & 3 Start & Test Basic Components	May-22-2017	May-25-2017	3	0%	-18																
B5960	Velocity Meter	May-22-2017	May-23-2017	1	0%	-8																
B5970	Density Meter - Barge	May-22-2017	May-25-2017	3	0%	-10																
B2650	Jet Water System Operational Test	May-24-2017	May-26-2017	2	0%	-38																
B4180	Hydraulic Pump P1 Startup & Test	May-25-2017	May-29-2017	2	0%	-18																
B4190	Hydraulic Pump P2 Startup & Test	May-25-2017	May-29-2017	2	0%	-18																
B4200	Hydraulic Pump P3	May-25-2017	May-29-2017	2	0%	-18																
B3650	Sump Eductor Bilge (Port)	May-26-2017	May-29-2017	1	0%	-38																
B3660	Sump Eductor Bilge (Starboard)	May-26-2017	May-29-2017	1	0%	-38																
B2530	Bilge System Operational Test - Barge	May-29-2017	Jun-01-2017	3	0%	-38																
MST05	Finish Milestone - Bilge System Components		May-29-2017	0	0%	-38																
MST16	Finish Milestone: Main Hydraulic (Valve Stand) Piping System Components		May-29-2017	0	0%	-12																
B6050	Test 6.6kV to Multi-Drive and Main Switchboard	Jun-15-2017	Jun-19-2017	3	0%	-29																





Activity ID	Activity Name	Start	Finish	Original Duration	Physical % Complete	Total Float	2017															
							Qtr 1			Qtr 2			Qtr 3			Qtr 4						
							Feb	Mar	Apr	May	Jun	Jul	Aug	Sep	Oct	Nov						
B3080	Bow Thruster Port Operational Test - Barge	Jun-15-2017	Jun-16-2017	2	0%	-49																
B3090	Bow Thruster Starboard Operational Test - Barge	Jun-15-2017	Jun-16-2017	2	0%	-49																
B5660	Multi-Drive AFE 1 Individual Component Test	Jun-15-2017	Jun-19-2017	3	0%	-35																
B5670	Multi-Drive AFE 2 Individual Component Test	Jun-15-2017	Jun-19-2017	3	0%	-35																
B5460	Multi-Drive SC2 (SC2 => MSB) Individual Component Test	Jun-20-2017	Jun-21-2017	2	0%	-35																
B5680	Multi-Drive Full Load Functionality Test	Jun-22-2017	Jun-29-2017	6	0%	-35																
Final Activities		Sep-19-2016 A	Aug-10-2017	234		-49	Aug-10-2017, Final Activities															
Dock& Builder Trials - Tug Only		Sep-19-2016 A	Aug-09-2017	233		-49	Aug-09-2017, Dock& Builder Trials - Tug Only															
T4000	CPP System Vendor Check List - Tug	Sep-19-2016 A	Feb-06-2017	2	50%	42																
T4030	Shaft Seal Hydraulic Piping Vendor Check List - Tug	Sep-19-2016 A	Feb-07-2017	2	10%	45																
T3490	Cathodic System Pre-Launch Test - Tug	Feb-03-2017 A	Feb-04-2017 A	2	100%																	
T3470	Hull Markings Verification Test - Tug	Feb-06-2017	Feb-06-2017	1	0%	48																
T3480	UWILD Markings Verification Test - Tug	Feb-06-2017	Feb-06-2017	1	0%	48																
T3910	Bier MAMS Check List - Tug	Feb-06-2017	Feb-07-2017	2	0%	17																
T3920	Bier PMS Check List - Tug	Feb-06-2017	Feb-07-2017	2	0%	21																
T3930	Vosta Check List - Tug	Feb-06-2017	Feb-07-2017	2	0%	49																
T3950	Main Engines Vendor Check List - Tug	Feb-06-2017	Feb-07-2017	2	0%	14																
T3960	Reduction Gears Vendor Check List - Tug	Feb-06-2017	Feb-07-2017	2	0%	26																
T3970	MSD Vendor Check List - Tug	Feb-06-2017	Feb-07-2017	2	0%	44																
T3980	Auxiliary Generator Vendor Check List - Tug	Feb-06-2017	Feb-07-2017	2	0%	42																
T3990	Emergency Generator Vendor Check List - Tug	Feb-06-2017	Feb-07-2017	2	0%	41																
T4010	Steering System Vendor Check List - Tug	Feb-06-2017	Feb-07-2017	2	0%	44																
T4040	Water Maker Vendor Check List - Tug	Feb-06-2017	Feb-07-2017	2	0%	43																
T4050	Stores Crane Vendor Check List - Tug	Feb-06-2017	Feb-07-2017	2	0%	45																
T4060	Capstans Vendor Check List - Tug	Feb-06-2017	Feb-07-2017	2	0%	45																
T4070	Inflatable Lifeboat Vendor Check List - Tug	Feb-06-2017	Feb-07-2017	2	0%	45																
T4080	Rescue Boat Vendor Check List - Tug	Feb-06-2017	Feb-07-2017	2	0%	44																
T4090	Switchboards & Switchgear Vendor Check List - Tug	Feb-06-2017	Feb-07-2017	2	0%	-26																
T4100	Emergency Switchboard Vendor Check List - Tug	Feb-06-2017	Feb-07-2017	2	0%	44																
T4110	Shaft Generators Vendor Check List - Tug	Feb-06-2017	Feb-07-2017	2	0%	28																
T4120	6600V Switchboard Vendor Check List - Tug	Feb-06-2017	Feb-07-2017	2	0%	38																
T4130	6600V/480V Service Transformers. Vendor Check List - Tug	Feb-06-2017	Feb-06-2017	1	0%	33																
T4140	480V Static Converter Vendor Check List - Tug	Feb-06-2017	Feb-06-2017	1	0%	29																
T4160	Navigation & Communication Vendor Check List - Tug	Feb-06-2017	Feb-07-2017	2	0%	44																
T4170	Ship's Interior / Exterior Communication System Vendor Check List - Tug	Feb-06-2017	Feb-07-2017	2	0%	45																
T4180	General Alarm System Vendor Check List - Tug	Feb-06-2017	Feb-07-2017	2	0%	45																
T4200	Incinerator Vendor Check List - Tug	Feb-06-2017	Feb-07-2017	2	0%	45																
T3600	Emergency Hawser Operational Test - Tug	Feb-08-2017	Feb-08-2017	1	0%	46																
T3610	Towing Bridle Operational Test - Tug	Feb-08-2017	Feb-09-2017	2	0%	45																

Remaining Level of Effort
 Critical Remaining Work
 Actual Level of Effort
 Milestone
 Actual Work
 Summary
 Remaining Work





Activity ID	Activity Name	Start	Finish	Original Duration	Physical % Complete	Total Float	2017															
							Qtr 1			Qtr 2			Qtr 3			Qtr 4						
							Feb	Mar	Apr	May	Jun	Jul	Aug	Sep	Oct	Nov						
T3650	Inflatable Lifeboat Operational Test - Tug	Feb-08-2017	Feb-09-2017	2	0%	45																
T3800	480V Static Converter Component Check - Tug	Feb-08-2017	Feb-13-2017	3	0%	28																
T3810	Emergency Shutdown Operational Test - Tug	Feb-10-2017	Feb-14-2017	2	0%	43																
T1690	Shore Power Receptacle Test	Feb-13-2017	Feb-13-2017	1	0%	-27																
T3690	Portable Fire Suppression Equipment Operational Test	Feb-13-2017	Feb-15-2017	3	0%	41																
T3730	Window Washer System Operational Test	Feb-13-2017	Feb-14-2017	2	0%	42																
T1710	Emergency Switchboard System Component Check - Tug	Feb-13-2017	Feb-15-2017	3	0%	-26																
T3510	Sounding Tubes Unobstructed Flow Test - Tug	Feb-15-2017	Feb-17-2017	3	0%	39																
T3520	Vents Unobstructed Flow Test - Tug	Feb-15-2017	Feb-17-2017	3	0%	39																
T3530	Overflows Unobstructed Flow Test - Tug	Feb-15-2017	Feb-17-2017	3	0%	39																
T3750	Floodlights Operational Test - Tug	Feb-16-2017	Feb-17-2017	2	0%	39																
T3500	Quick Closing Valve System Operational Test	Feb-20-2017	Feb-22-2017	3	0%	36																
T3550	Emergency Towing System Operational Test - Tug	Feb-20-2017	Feb-21-2017	2	0%	37																
T3590	Load Test of Stores Cranes Test - Tug	Feb-20-2017	Feb-22-2017	3	0%	36																
T3540	Door & Hatch Operational Tests	Feb-21-2017	Feb-28-2017	5	0%	33																
T3670	Lifesaving Equipment Operational Test	Feb-21-2017	Feb-23-2017	2	0%	36																
T3440	Load Test of Pad Eyes in Machinery Space Operational Test	Feb-27-2017	Mar-01-2017	3	0%	31																
T3560	Fire Dampers Operational Test	Feb-27-2017	Mar-03-2017	5	0%	29																
T3580	Load Test of Exterior Pad Eyes Operational Test	Feb-27-2017	Mar-01-2017	3	0%	31																
T3620	Anchor & Chain Operational Test - Tug	Mar-06-2017	Mar-08-2017	3	0%	26																
T3830	Illumination Survey	Mar-09-2017	Mar-10-2017	2	0%	24																
T1680	480V Main Distribution Switchboard System Component Check	Mar-13-2017	Mar-15-2017	3	0%	-49																
T1910	Transformer ET1 Test	Mar-23-2017	Mar-24-2017	2	0%	-49																
T1920	Emergency System Panel EL1/EL1A Test	Mar-27-2017	Mar-28-2017	2	0%	-49																
T6360	Incline & Dead weight - Tug	Mar-28-2017	Mar-29-2017	2	0%	11																
T1930	Emergency MCC Test	Apr-06-2017	Apr-10-2017	3	0%	-38																
T1700	480 V Barge Receptacle Test	Apr-11-2017	Apr-11-2017	1	0%	6																
T1720	MCC-1 Test	Apr-11-2017	Apr-13-2017	3	0%	-49																
T1770	MCC-2 Test	Apr-11-2017	Apr-13-2017	3	0%	-47																
T1820	Transformer T2 Test	Apr-11-2017	Apr-12-2017	2	0%	-48																
T1830	Transformer T3 Test	Apr-11-2017	Apr-12-2017	2	0%	-48																
T1840	208/120V Main Distribution Switchboard Test - Tug	Apr-13-2017	Apr-19-2017	5	0%	-48																
T1730	Distribution Panel L7 & Transformer Test	Apr-14-2017	Apr-18-2017	3	0%	-17																
T1740	Distribution Panel P1 Test	Apr-14-2017	Apr-17-2017	2	0%	-42																
T1750	Distribution Panel P2 Test	Apr-14-2017	Apr-14-2017	1	0%	-49																
T1760	Distribution Panel P3 Test	Apr-14-2017	Apr-14-2017	1	0%	-17																
T1780	Distribution Panel P4 Test	Apr-14-2017	Apr-14-2017	1	0%	-5																
T1790	Distribution Panel P5 Test	Apr-14-2017	Apr-14-2017	1	0%	-36																
T1800	Distribution Panel P240 & Transformer Test	Apr-14-2017	Apr-17-2017	2	0%	-43																

Remaining Level of Effort Critical Remaining Work
 Actual Level of Effort Milestone
 Actual Work Summary
 Remaining Work





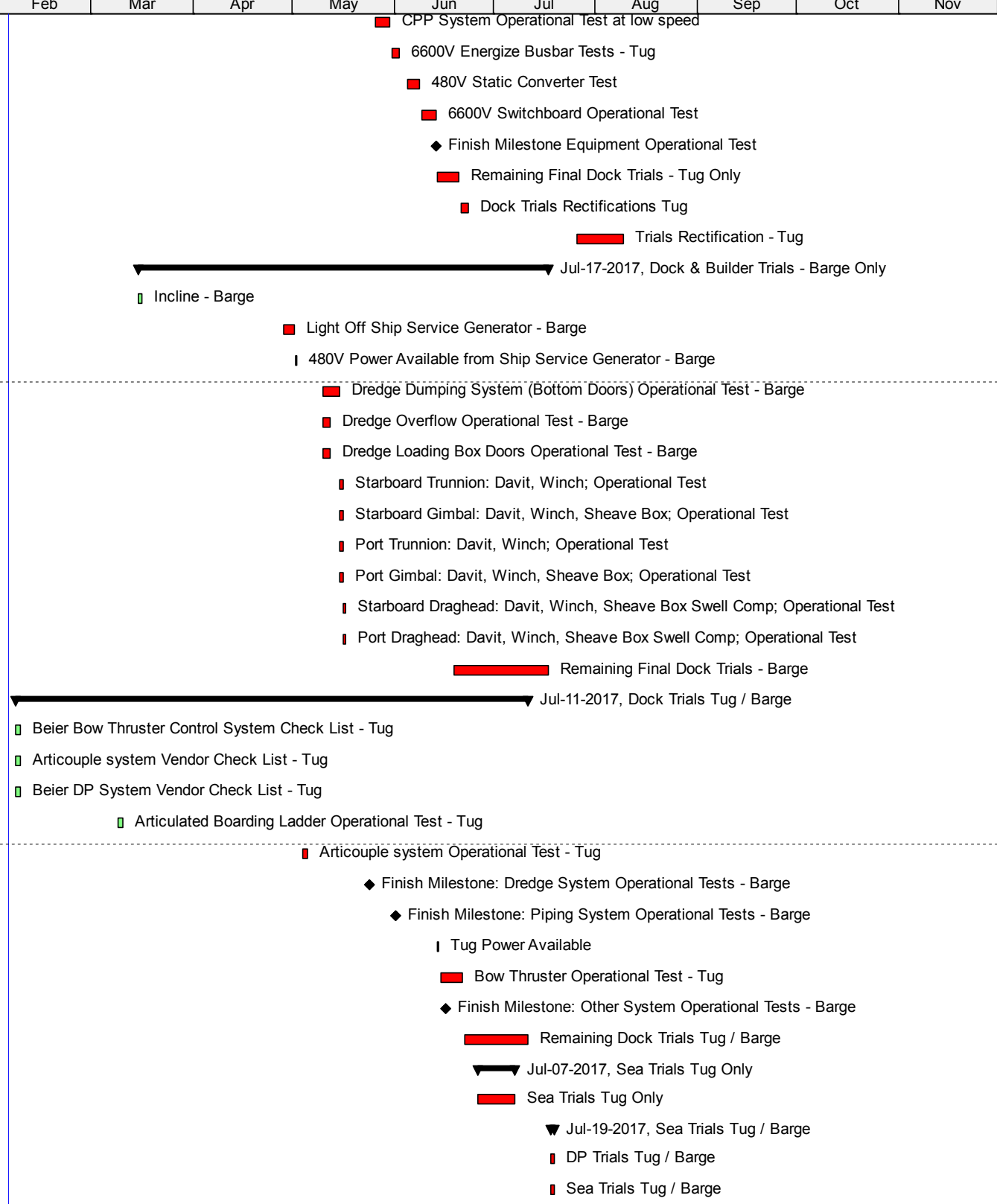
Activity ID	Activity Name	Start	Finish	Original Duration	Physical % Complete	Total Float	2017															
							Qtr 1		Apr	Qtr 2		Jul	Qtr 3		Qtr 4							
							Feb	Mar		May	Jun		Aug	Sep	Oct	Nov						
T1810	Distribution Panel L8 & Transformer Test	Apr-14-2017	Apr-18-2017	3	0%	-16				■	Distribution Panel L8 & Transformer Test											
T3570	Stores Crane System Operational Test	Apr-14-2017	Apr-17-2017	2	0%	-2				■	Stores Crane System Operational Test											
T3630	Capstans Operational Test	Apr-14-2017	Apr-17-2017	2	0%	-2				■	Capstans Operational Test											
T4240	HT Cooling Water Heater 2 - 54kw Test	Apr-14-2017	Apr-14-2017	1	0%	-34					HT Cooling Water Heater 2 - 54kw Test											
T3420	Potable Water Heater Operational Test	Apr-17-2017	Apr-18-2017	2	0%	-3				■	Potable Water Heater Operational Test											
T4230	Main Engine Barring Equipment Test	Apr-17-2017	Apr-18-2017	2	0%	-36				■	Main Engine Barring Equipment Test											
T3660	Rescue Boat Operational Test	Apr-18-2017	Apr-20-2017	3	0%	-5				■	Rescue Boat Operational Test											
T4270	Reduction Gearbox Heaters Test	Apr-18-2017	Apr-18-2017	1	0%	-24					Reduction Gearbox Heaters Test											
T3460	HVAC Operational Test	Apr-19-2017	May-08-2017	14	0%	-17				■	HVAC Operational Test											
T1850	Distribution Panel L1/L1A Test	Apr-20-2017	Apr-20-2017	1	0%	-48					Distribution Panel L1/L1A Test											
T1860	Distribution Panel L2 Test	Apr-20-2017	Apr-20-2017	1	0%	-17					Distribution Panel L2 Test											
T1870	Distribution Panel L3 Test	Apr-20-2017	Apr-20-2017	1	0%	-8					Distribution Panel L3 Test											
T1880	Distribution Panel L4 Test	Apr-20-2017	Apr-20-2017	1	0%	-11					Distribution Panel L4 Test											
T1890	Distribution Panel L5 Test	Apr-20-2017	Apr-20-2017	1	0%	-11					Distribution Panel L5 Test											
T1900	Distribution Panel L6 Test	Apr-20-2017	Apr-20-2017	1	0%	-8					Distribution Panel L6 Test											
T3320	Machinery Ventilation Operational Test	Apr-20-2017	Apr-21-2017	2	0%	-6				■	Machinery Ventilation Operational Test											
T3410	Shaft Seal Hydraulic Piping Operational Test	Apr-20-2017	Apr-21-2017	2	0%	-6				■	Shaft Seal Hydraulic Piping Operational Test											
T3740	Laundry Equipment Operational Test	Apr-20-2017	Apr-21-2017	2	0%	-6				■	Laundry Equipment Operational Test											
T3710	Window Heater System Operational Test	Apr-21-2017	Apr-24-2017	2	0%	-7				■	Window Heater System Operational Test											
T3720	Window Wiper System Operational Test	Apr-21-2017	Apr-24-2017	2	0%	-7				■	Window Wiper System Operational Test											
T3640	Galley and Mess Equipment Operational Test	Apr-24-2017	Apr-25-2017	2	0%	-8				■	Galley and Mess Equipment Operational Test											
T3680	Water Mist Fire Suppression Operational Test	Apr-25-2017	May-01-2017	5	0%	-12				■	Water Mist Fire Suppression Operational Test											
T3380	CPP System Operational Test 0 RPM	Apr-26-2017	Apr-28-2017	3	0%	-14				■	CPP System Operational Test 0 RPM											
T3390	Steering System Operational Test	Apr-26-2017	Apr-28-2017	3	0%	-11				■	Steering System Operational Test											
T3760	Navigation & Running Light System Operational Test	Apr-26-2017	Apr-27-2017	2	0%	-10				■	Navigation & Running Light System Operational Test											
T3860	Navigation and Communication Operational Test	Apr-26-2017	Apr-28-2017	3	0%	-11				■	Navigation and Communication Operational Test											
T3870	Ships Interior / Exterior Communication System Operational Test	Apr-26-2017	Apr-27-2017	2	0%	-10				■	Ships Interior / Exterior Communication System Operational Test											
T3880	General Alarm System Operational Test	Apr-26-2017	Apr-27-2017	2	0%	-10				■	General Alarm System Operational Test											
T3450	Load Test of Hoists & Monorails in Machinery Space Operational Test	Apr-27-2017	May-01-2017	3	0%	-12				■	Load Test of Hoists & Monorails in Machinery Space Operational Test											
T3850	Fire Detection & Alarm Operational Test	May-02-2017	May-08-2017	5	0%	-17				■	Fire Detection & Alarm Operational Test											
T3900	Incinerator operational Test	May-02-2017	May-03-2017	2	0%	-14				■	Incinerator operational Test											
T3430	Water Maker Operational Test	May-04-2017	May-09-2017	4	0%	-18				■	Water Maker Operational Test											
T3350	MSD Operational Test	May-10-2017	May-12-2017	3	0%	-21				■	MSD Operational Test											
T3330	Main Engines Operational Test	May-17-2017	May-23-2017	5	0%	-49				■	Main Engines Operational Test											
T3360	Auxiliary Generator Operational Test	May-17-2017	May-19-2017	3	0%	-28				■	Auxiliary Generator Operational Test											
T3370	Emergency Generator Operational Test	May-17-2017	May-19-2017	3	0%	-29				■	Emergency Generator Operational Test											
T3770	Emergency Switchboard Operational Test	May-22-2017	May-24-2017	3	0%	-29				■	Emergency Switchboard Operational Test											
T3340	Reduction Gears Operational Test	May-24-2017	May-25-2017	2	0%	-49				■	Reduction Gears Operational Test											
T3780	Shaft Generators Operational Test	May-26-2017	May-30-2017	3	0%	-49				■	Shaft Generators Operational Test											

Remaining Level of Effort
 Critical Remaining Work
 Actual Level of Effort
 Milestone
 Actual Work
 Summary
 Remaining Work





Activity ID	Activity Name	Start	Finish	Original Duration	Physical % Complete	Total Float	2017															
							Qtr 1			Qtr 2			Qtr 3			Qtr 4						
							Feb	Mar	Apr	May	Jun	Jul	Aug	Sep	Oct	Nov						
T6070	CPP System Operational Test at low speed	May-26-2017	May-30-2017	3	0%	-33																
T6010	6600V Energize Busbar Tests - Tug	May-31-2017	Jun-02-2017	3	0%	-49																
T6020	480V Static Converter Test	Jun-05-2017	Jun-08-2017	4	0%	-49																
T3790	6600V Switchboard Operational Test	Jun-09-2017	Jun-13-2017	3	0%	-49																
T5570	Finish Milestone Equipment Operational Test		Jun-13-2017	0	0%	-43																
T1080	Remaining Final Dock Trials - Tug Only	Jun-14-2017	Jun-20-2017	5	0%	-43																
T1110	Dock Trials Rectifications Tug	Jun-21-2017	Jun-23-2017	3	0%	-43																
T1180	Trials Rectification - Tug	Jul-26-2017	Aug-09-2017	11	0%	-49																
Dock & Builder Trials - Barge Only		Mar-15-2017	Jul-17-2017	89		-49																
B1130	Incline - Barge	Mar-15-2017	Mar-16-2017	2	0%	17																
B1020	Light Off Ship Service Generator - Barge	Apr-28-2017	May-01-2017	2	0%	-16																
B6000	480V Power Available from Ship Service Generator - Barge	May-02-2017	May-02-2017	1	0%	-16																
B5480	Dredge Dumping System (Bottom Doors) Operational Test - Barge	May-10-2017	May-15-2017	3	0%	-25																
B5800	Dredge Overflow Operational Test - Barge	May-10-2017	May-12-2017	2	0%	-24																
B5810	Dredge Loading Box Doors Operational Test - Barge	May-10-2017	May-12-2017	2	0%	-24																
B5820	Starboard Trunnion: Davit, Winch; Operational Test	May-15-2017	May-16-2017	1	0%	-28																
B5830	Starboard Gimbal: Davit, Winch, Sheave Box; Operational Test	May-15-2017	May-16-2017	1	0%	-28																
B5850	Port Trunnion: Davit, Winch; Operational Test	May-15-2017	May-16-2017	1	0%	-28																
B5860	Port Gimbal: Davit, Winch, Sheave Box; Operational Test	May-15-2017	May-16-2017	1	0%	-28																
B5840	Starboard Draghead: Davit, Winch, Sheave Box Swell Comp; Operational Test	May-16-2017	May-17-2017	1	0%	-29																
B5870	Port Draghead: Davit, Winch, Sheave Box Swell Comp; Operational Test	May-16-2017	May-17-2017	1	0%	-29																
B6030	Remaining Final Dock Trials - Barge	Jun-19-2017	Jul-17-2017	21	0%	-49																
Dock Trials Tug / Barge		Feb-06-2017	Jul-11-2017	112		-45																
T3940	Beier Bow Thruster Control System Check List - Tug	Feb-06-2017	Feb-07-2017	2	0%	44																
T4020	Articouple system Vendor Check List - Tug	Feb-06-2017	Feb-07-2017	2	0%	45																
T4190	Beier DP System Vendor Check List - Tug	Feb-06-2017	Feb-07-2017	2	0%	48																
T3700	Articulated Boarding Ladder Operational Test - Tug	Mar-09-2017	Mar-10-2017	2	0%	24																
T3400	Articouple system Operational Test - Tug	May-04-2017	May-05-2017	2	0%	-16																
MST03	Finish Milestone: Dredge System Operational Tests - Barge		May-24-2017	0	0%	-32																
MST01	Finish Milestone: Piping System Operational Tests - Barge		Jun-01-2017	0	0%	-38																
TB7005	Tug Power Available	Jun-14-2017	Jun-14-2017	1	0%	-49																
T5590	Bow Thruster Operational Test - Tug	Jun-15-2017	Jun-21-2017	5	0%	-45																
MST02	Finish Milestone: Other System Operational Tests - Barge		Jun-16-2017	0	0%	-49																
T1150	Remaining Dock Trials Tug / Barge	Jun-22-2017	Jul-11-2017	14	0%	-45																
Sea Trials Tug Only		Jun-26-2017	Jul-07-2017	10		-43																
T1140	Sea Trials Tug Only	Jun-26-2017	Jul-07-2017	10	0%	-43																
Sea Trials Tug / Barge		Jul-18-2017	Jul-19-2017	2		-45																
TB5640	DP Trials Tug / Barge	Jul-18-2017	Jul-19-2017	2	0%	-45																
ST1090	Sea Trials Tug / Barge	Jul-18-2017	Jul-19-2017	2	0%	-49																



▶ Remaining Level of Effort ■ Critical Remaining Work
▶ Actual Level of Effort ◆ Milestone
█ Actual Work ▶ Summary
█ Remaining Work





Activity ID	Activity Name	Start	Finish	Original Duration	Physical % Complete	Total Float	2017										
							Qtr 1		Qtr 2			Qtr 3			Qtr 4		
							Feb	Mar	Apr	May	Jun	Jul	Aug	Sep	Oct	Nov	
Dredging Trials																	
DT1100	Dredging Trials	Jul-20-2017	Jul-25-2017	4	0%	-49											
Final Delivery																	
D8000	Trials Rectification - Barge	Jul-26-2017	Aug-04-2017	8	0%	-46											
B1120	Delivery - Barge	Aug-07-2017	Aug-07-2017	1	0%	-46											
T1190	Delivery - Tug	Aug-10-2017	Aug-10-2017	1	0%	-49											

- ▼ Jul-25-2017, Dredging Trials
- Dredging Trials
- ▼ Aug-10-2017, Final Delivery
- Trials Rectification - Barge
- | Delivery - Barge
- | Delivery - Tug

Remaining Level of Effort
 Critical Remaining Work
 Actual Level of Effort
 Milestone
 Actual Work
 Summary
 Remaining Work

